



WWW.14000FREDERICK.COM

CEDAR LANE EQUESTRIAN CENTER · 14000 FREDERICK ROAD WEST FRIENDSHIP, MD

Cedar Lane Equestrian Center is a custom built 60 acre training and boarding facility in the heart of Western Howard County offered for sale to the equestrian who wants the utmost in every amenity. There are four barns with a total of 26 stalls, a large indoor and outdoor arena, 15 safely fenced pastures with water and electric to each, workshop, shavings shed, manure composting system, and a charming two bedroom farmhouse PLUS a second homesite. Offered at \$2,000,000.



WWW.6216MIDDLEBURG.COM

6216 MIDDLEBURG ROAD, MIDDLEBURG, MD

Beautiful 15 acre turnkey, income-producing horse farm with 16 stall center aisle barn & lighted, 100 x 200 bluestone & sand outdoor arena & wooden round pen. The barn has a large heated tack room, half bath, feed room, wash stall, & grooming stall. The barn features a climate-controlled office perfect for working remotely or convert it to a lounge for your clients and staff. Each pasture has RAMM safe vinyl fencing which requires minimal maintenance & several run-in sheds. The home features three bedrooms & three full baths with an open floor plan & full in-law suite with private entrance & kitchenette. The hugedeck is perfect for summer BBQ. \$615,000

I have buyers looking for farms in Montgomery & Howard Counties.



MELISA KLEM

Cell: 301.602.8117 • Office: 866.424.2601
MKlem@HaganRealty.com



WWW.BUYLOCKEMEADOWS.COM

LOCKE MEADOWS FARM 0 WADESVILLE RD BERRYVILLE, VA

70 Acre historic property and turn key event facility available for the very first time, complete with 3 show rings, full course of custom jumps, show office, judge's stands, sound system, and equipment. This income-producing showgrounds offers enormous potential for future growth and includes a homesite with 3 bedroom perc, two additional dwelling rights and ample space for the custom barn and indoor arena of your dreams. Priced to sell at \$625,000.



DENISE PARSONS

Cell: (240) 506-1713 • Office: 866.424.2601
Dparsons@haganrealty.com



WWW.14405CHRISMANHILL.COM

14405 CHRISMAN HILL DRIVE BOYDS, MD

Don't miss a rare opportunity, this 3 acre farmette in Black Hills Estates is ready for you and your horses. Backing directly to Black Hills Regional Park for miles of trails and even lake access, this lovingly cared for home, landscaped yard and fenced pastures and barn provide easy access to I270 and the Boyds MARC train station. \$639,990



WWW.1011VALE.COM

1011 VALE ROAD, BEL AIR, MD

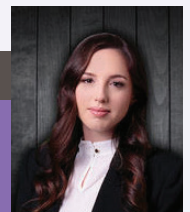
This charming 3+ Acre Farmette welcomes you and your family. The fully remodeled 3BR, 2BA open concept rancher is move-in ready. Your horses will enjoy the 2-stall barn, paddock & separate pasture, you'll enjoy the lighted ring & watching your horses from the large deck in the fenced back yard. The property also features an attached two car garage, detached oversized one car garage & lrg unfinished basement w/separate entrance. \$449,900



WWW.309DUHAMELCORNER.COM

309 DUHAMEL CORNER ROAD, MARYDEL, MD

A turnkey equestrian property that is this well cared for is a rare find! This lovely 5-acre farmette features so many incredible updates. The house boasts a new roof, siding, boiler, hot water heater, refrigerator, stove, carpet & hardwood in addition to a fully renovated kitchen & full bath. The barn features two large stalls, a tack room, a wash stall, & open space with room for storage or more stalls. Equestrians will love the 80 x 120 outdoor arena with excellent drainage for all weather riding. Other amenities include two small paddocks, three pastures, high-tensile fencing, a workshop, a garage, a chicken coop, two pig pens, a vegetable garden, & plenty of options for riding off-property. \$399,000



SARAH LIPKOWITZ

Office: 866-424-2601 ext. 720
Cell: 301-502-7623
SLipkowitz@haganrealty.com

