

YOUR MARYLAND HORSE COUNCIL PUBLICATION

NOVEMBER 2021

# EQUUS JERY<sup>®</sup>

## MILKSHAKE

(owned by Southern Maryland Equine Miracles)

Free Rein Equine, LLC Series

Rescue Horse of the Year



**Celebrating Charities & Giving**

**Holiday Gift Guide • MHC Member Charities • Contributions & Taxes**



# SAVE \$3 PER BAG

Visit [www.legendshorsefeed.com](http://www.legendshorsefeed.com) to print your coupon.

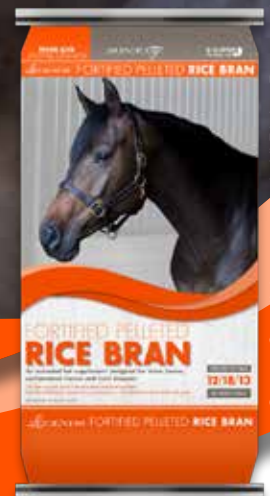
LEGENDS®



An extruded fat supplement designed for show horses, performance horses and hard keepers

Offer Vaild  
10/1/21 - 11/30/21

FORTIFIED PELLETED RICE BRAN



Legends® feeds are fortified by Kentucky Equine Research to meet your horse's individual needs. For feeding advice or to create a custom ration, visit [microsteed.com/legends](http://microsteed.com/legends). Visit [ker.com/legends](http://ker.com/legends) to read the latest in equine nutrition and health and subscribe to the Equineews® newsletter presented by Legends® Feeds.



**LEGENDSHORSEFEED.COM**

# Experience the *Thrill!*

TRAINING • LESSONS • SALES • BOARDING



**Tricia Tillman, Head Trainer**



**Austin Morris, Trainer**

## CONGRATULATIONS TO OUR ALL AMERICAN CONGRESS RIDERS

Drivin By Shootin  
(owned by Michael and  
Tatyana Riley, Dickerson, MD)  
& Tricia Tillman  
on making the  
Level 4 Open Reining Finals.

Smarty's Bea  
& Sarah McNally  
(New Market, MD)  
on Their  
Top Ten Finish  
in the Amateur Reining

**Bob LaPorta**



# TOC

**Special  
Package  
Rates on  
Youth, Non-Pro  
& Beginner Adult  
Lessons**

Summer Wind Farm proudly feeds


## TRIBUTE®

EQUINE NUTRITION

the POWER of RESULTS™

[www.TributeEquineNutrition.com](http://www.TributeEquineNutrition.com)

## ALWAYS QUALITY REINING HORSES FOR SALE

 **Summer Wind Farm**  
Reining Horses

### 301-466-8367

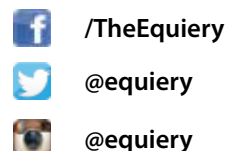
10901 Moxley Road  
Damascus, MD 20872

Owners: Bob & Debby LaPorta

[www.SWReininghorses.com](http://www.SWReininghorses.com) • [Summerwf1@aol.com](mailto:Summerwf1@aol.com)

# EQUERIY

YOUR MARYLAND HORSE COUNCIL PUBLICATION



*The Equiry* is published 12 times a year (monthly), and is distributed free at various points of sale and service throughout Maryland. To find your nearest distributor, visit [www.equiry.com/distributors](http://www.equiry.com/distributors). Contact us for more information on equestrian services in Maryland.

1-800-244-9580 / 410-489-7826  
[info@equiry.com](mailto:info@equiry.com)  
[www.equiry.com](http://www.equiry.com)

P.O. Box 610 / 15928 Frederick Road  
Lisbon, MD 21765

## EQUIRY STAFF

### Editor-in-Chief/Art Director

Katherine Rizzo  
[katherine.rizzo@equiry.com](mailto:katherine.rizzo@equiry.com)

### Associate Publisher/Ad Sales

Tracy McKenna  
[tracy.mckenna@equiry.com](mailto:tracy.mckenna@equiry.com)

### Bookkeeping

Carolyn Del Grosso  
[carolyn@equiry.com](mailto:carolyn@equiry.com)

### Advertising Design

Peggy Ingles & Kristen Barth

### Independent Sales

Michelle Rosenkilde  
443-324-7919  
[horsehotline@gmail.com](mailto:horse hotline@gmail.com)

Free home delivery of  
*The Equiry* print edition is included  
with a Maryland Horse Council  
membership.

## JOIN TODAY

[join.mdhorsecouncil.org](http://join.mdhorsecouncil.org)

844-MDHORSE  
[membership@mdhorsecouncil.org](mailto:membership@mdhorsecouncil.org)

## OUR SPONSORS

The Tracy Diamond Team  
Paradise Energy Solutions  
MD Horse Industry Board  
MidAtlantic Farm Credit  
MD Horse Trials at Loch Moy Farm

## One Common Bond: The Horse • One Common Voice:

## THE MARYLAND HORSE COUNCIL

The Maryland Horse Council, Inc. (MHC) is a 501(c)(6) trade association that represents all segments of the Maryland horse industry, at the state and local level. MHC has been representing the Maryland horse industry for over 35 years.

MHC's core mission is to lobby state and local government for sensible and economically sound positions, and to provide educational and business networking resources for the Maryland horse community. As part of its work, MHC participates in the Maryland Farm Bureau and the American Horse Council's Coalition of State Horse Councils.

*The Equiry* is MHC's trade publication. MHC uses *The Equiry* to provide the Maryland horse community with horse industry news, educational articles, photos, and profiles on horse businesses and horse people, as well as a service directory for businesses that serve the Maryland horse industry.

## EXECUTIVE COMMITTEE

*The Executive Committee meets monthly or more often to oversee the daily business affairs of the Maryland Horse Council.*

Kimberly K. Egan, *Co-President*  
Corinne Pouliquen, *Co-President*  
Ahesahmahk Dahn, *Vice-President*  
Crystal Brumme Pickett, *Secretary*  
Neil Agate, *Treasurer*

Ashley Adams Aycock  
Erica Lancaster  
Jane Seigler  
Carolann Sharpe  
Laura Lane-Unsworth

## BOARD OF DIRECTORS

*The Board of Directors meets quarterly, determines policies and elects the Officers and Executive Committee.*

Terms July 1, 2021 - June 30, 2023

### Directors Representing Associations

Jordyn Egan, *Maryland Horse Breeders Association*

### Directors Representing Industry Professionals

Ahesahmahk Dahn, *City Ranch*  
Crystal Brumme Pickett, *FreeStyle Marketing*  
Corinne Pouliquen, *Park Overlook Farm*

Jane Seigler, *Dressage at Sundown*  
Keith Wills, *MidAtlantic Farm Credit*

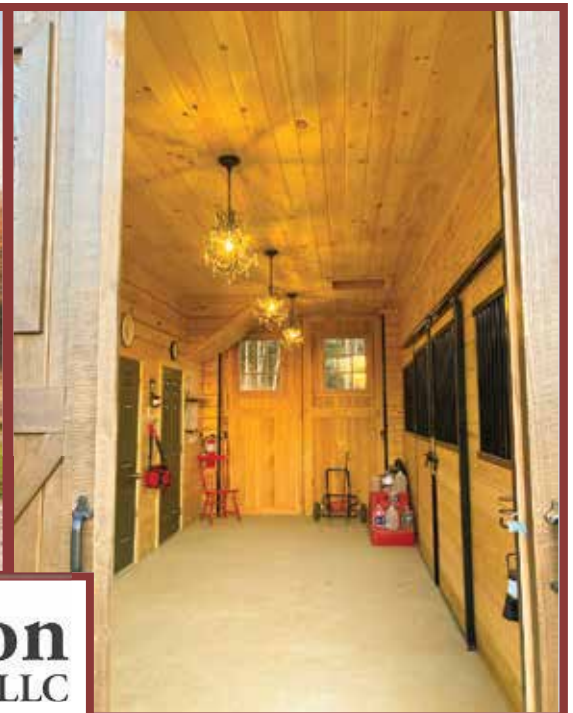
### Directors Representing Individual Members

Neil Agate  
Dawn Edgerton-Cameron  
Kimberly K. Egan

Royce Herman  
Erica Lancaster

Carolann Sharpe  
Jane Thery





# Double S Construction LLC

Where Quality Craftmanship Meets You!

## Custom Barn Building and Designing

Horse Barns • Party Barns • Garages • Riding Arenas

0221

**Steven Glick**

Owner/Sales Manager

717-823-1693

Steve@Doublesconstruction.net  
www.Double-S-Construction.com

## Autumn at PHC

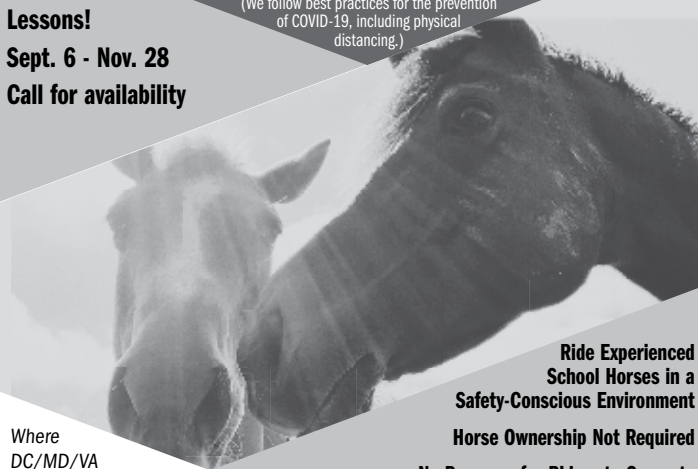
3 Indoor Arenas = Riding All Year  
Without Worrying About the Weather!

(We follow best practices for the prevention of COVID-19, including physical distancing.)

**Lessons!**

**Sept. 6 - Nov. 28**

**Call for availability**



Ride Experienced  
School Horses in a  
Safety-Conscious Environment

Horse Ownership Not Required

No Pressure for Riders to Compete

Convenient Location

Legendary Facilities

Professional Staff

Where  
DC/MD/VA  
Learn to Ride!



14211 Quince Orchard Road  
North Potomac, MD 20878  
301-208-0200  
www.PotomacHorse.com

A Public Facility Leased from the Maryland-National Capital Park and Planning Commission

0921

www.equery.com | 800-244-9580

# MAAC Rolloffs & Equine Services

**Manure Removal**  
(Roll-Off or Pile)  
**Bedding (Sawdust)**

Adamstown, MD

**301-607-4381**

Serving

Montgomery, Frederick, Howard, Carroll,  
Prince George's, Anne Arundel & Washington  
Counties and Loudoun County VA

Visit us on the web at [midatlanticagconsulting.com](http://midatlanticagconsulting.com)

0621



# FALLING LEAVES BRING THE NEED FOR THESE IMPORTANT PRODUCTS

With summer pastures now dormant, make sure your horses receive adequate forage, fiber and minerals.



FCA Hay Replacer and Fortify Ration Balancer



ADM Hay Extender



ADM GROSTRONG®  
mineral and ration  
balancer products

LEARN MORE AT  
[farmerscoop.com](http://farmerscoop.com)  
and [admequine.com](http://admequine.com)

Join us on November 11th at 6:00 p.m.

## FREE DINNER & NUTRITION SEMINAR

with guest speaker Dr. James Lattimer, equine nutritionist with ADM Animal Nutrition. For meeting location and details, scan the QR code. RSVP by November 5th to 301-663-3113.



**Fresh, Excellent Quality Feeds**

820 East South St., Frederick, MD 21701

**(301) 663-3113**

*Dealer opportunities available!*

*proud distributor for* **ADM**





by Kimberly K. Egan and Corinne M. Pouliquen

We enjoyed writing our letter this month because all the news is good news, for a change. October saw two firsts for our industry – a new state Office of Outdoor Recreation and the inaugural running of the Maryland 5 Star at Fair Hill – and in November we will hold our Annual Meeting to preview exciting things to come.

### DNR Office of Outdoor Recreation

In late September, Governor Hogan created the Office of Outdoor Recreation (ORR) within the Maryland Department of Natural Resources. ORR's mission is to "enhance outdoor recreation opportunities and the economic benefits they produce," which will include implementing the Maryland Outdoor Recreation Economic Commission's (MOREC) recommendations on how to strengthen Maryland's outdoor recreation industry. Gov. Hogan appointed J. Daryl Anthony as ORR's Executive Director.

Governor Hogan's action has been well-received by the outdoor recreation industry. The Executive Director of the national Outdoor Recreation Roundtable, Jessica Turner, and the President and CEO of the Chesapeake Conservancy, Joel Dunn, wrote in an Oct. 7, 2021 opinion piece in Maryland Matters that "Maryland has taken a big step forward by joining 17 other states across the country and investing in a huge driver of the state's economy — outdoor recreation," which, they noted, includes "everything from skiing to horseback riding, hunting and fishing, to boating and surfing."

Our Government Relations and our Trail & Greenways committees both expect to engage with ORR on a regular basis on behalf of the horse industry. Look for updates in future issues of *The Equiery*.

### Maryland 5 Star at Fair Hill Results

As you have no doubt heard by now, the Fédération Equestre Internationale (FEI, the international governing body of equestrian sports) ran the inaugural Maryland 5 Star at Fair Hill on October 14-17, one

of only seven such competitions in the world and the highest possible level of competition for international eventers. The level of competition at these five-star events is even higher than at the Olympics. The only other eventing competition at this level in the United States is the Land Rover Kentucky Three-Day Event in Lexington, Kentucky.

The Maryland 5 Star gave us the best possible finish we could hope for – four-time U.S. Olympian Boyd Martin, the pride of the Mid-Atlantic eventing scene and frequent competitor at Fair Hill, Loch Moy and other Maryland venues, won the the competition on the mare On Cue (owned by Christine Turner), becoming the first American to win a CCI5\*-L in 13 years.

Boyd Martin rode against the best eventers in the world, including the world's number 1 eventer, Oliver Townend from the United Kingdom, and the New Zealander Tim Price, who was number 3 in the world going in to the competition. Townend was in the lead for the entire competition until the final 90 seconds. He was the last rider to go and needed a clear show jumping round to beat Boyd. But he dropped a rail at jump 4, a heartbreaking end to two long days of flawless riding. Boyd's margin of victory over Townend was the slimmest of slim – 0.01 points. The crowd, quite literally, went wild.

Stay tuned to the December *Equiery* for more photos and recap from the inaugural Maryland 5 Star.



Chelsea Spear

Boyd Martin and On Cue are the inaugural Maryland 5 Star winners.

MHC co-President Corinne Pouliquen proved on Saturday that she is more than just a horse industry leader and accomplished attorney, she is also a fearsome off-road truck driver. After packing her truck with the leftovers from the MHC tailgate, she kindly offered a ride back to the (distant) parking area to four rain-soaked and bedraggled MHC volunteers. After being told by traffic control police that she could not make a left into the parking, she attempted a u-turn and ended up with the truck nosing into a hidden water-filled ditch. Undeterred, Corinne cheerfully hopped out, waded into the ditch, and locked the four-wheel drive hubs to allow traction on the two wheels that still had contact with the ground. Then she hopped back in, threw the truck in reverse and back out onto terra firma she went - much to the amazement and applause of the small crowd of onlookers that had gathered! Never underestimate the grit and resourcefulness of a horse lady!

## THANK YOU TO OUR MARYLAND HORSE COUNCIL SPONSORS!



[JOIN.MDHORSECOUNCIL.ORG](http://JOIN.MDHORSECOUNCIL.ORG)

# FREE Tax-Saving Review for Equestrians!

## CPA Helps Fellow Horse Lovers File Their Taxes Worry-Free When Dealing With The IRS

My staff and I are adult amateurs who compete in various disciplines. When not competing, we are helping assist other people with tax filing, planning and other financial situations.

I have been an expert tax professional for over 15 years. Currently, I'm looking to accept a few more like-minded clients who share a similar passion for horses.

If you are looking for a CPA or financial professional who understands your unique situation, feel free to contact me at my office.

\*Mention my "horse ad" and I will personally review your previous three years of tax returns at no charge as a fellow equestrian courtesy. (\$600 Value)

If you are not satisfied with my ability to help you and your tax situation for any reason, just say so and I'll be happy to return all of your documents and buy you lunch for your troubles ... guaranteed. I want you to have zero risk in choosing my tax firm to help you with Uncle Sam.




Jennifer Allen, CPA

**(301) 524-6335**

[www.jallenepa.com](http://www.jallenepa.com)

0320




[info@elitechiro sport.com](mailto:info@elitechiro sport.com)  
[www.elitechiro sport.com](http://www.elitechiro sport.com)

---

*Riding is hard work! Let us help.*

**Certified Chiropractic Sports Practitioners**  
**Soft Tissue Experts**

- Active release technique
- Graston technique
- Dry needling
- Strength & conditioning




---

10630 Little Patuxent Parkway Suite 329 | Columbia | 443-718-9432  
1122 Kenilworth Drive Suite 109 | Towson | (443) 901-4200



**SALTBOX CONSULTING**

*legal advice for the life sciences industry*

Kimberly K. Egan, Esq. | Founder  
kim.saltbox@gmail.com | 443-931-7662  
[www.thelawoflifesciences.com](http://www.thelawoflifesciences.com)

## SAVE THE DATE

**Maryland Horse Council Annual Meeting**

All are welcome to attend virtually via Zoom!  
6-7pm Sip & Share • 7-9pm Meeting

### Tuesday, November 30, 2021



**"How COVID grew my business!"**  
featuring  
**Industry Professional Members**

- Jennifer Allen of J. Allen & Associates
- Stephanie Williams of Clover Luck Stables
- Shashana Haag, owner of Brandywine Carriage Tours & Windmill Equestrian



**RSVP at [www.mdhorsecouncil.org](http://www.mdhorsecouncil.org)**



# NEWS & VIEWS

You Can Use

## Mechanicsville Animal Cruelty Case

On September 14, Jennifer Katherine Hurry of Mechanicsville was charged with one felony animal cruelty charge and 16 misdemeanor animal cruelty charges. The initial hearing on the case was scheduled for October 8.

According to court documents, the St. Mary's County Animal Control supervisor first contacted the St. Mary's County Sheriff's Office on January 5 with concerns about the neglect and maltreatment of several animals on a secluded property in Leonardtown. Hurry, who is 53, confirmed that the animals on the property belonged to her. A drone was used by the Sheriff's Office to observe the area before a search warrant was obtained and executed on January 21.

After two veterinarians inspected the animals, 19 horses, three cows, two goats and several fowl were removed from the property. Two dead horses that were not buried properly were also discovered. Necropsy revealed that one of the horses died of starvation when bone marrow examination showed the horse had 2.8% body fat at the time of its death. Healthy horses typically have 81.7% body fat.

This case is ongoing. We will print updates in future print issues as well as on equiquery.com.

## NRHA Ceases Negotiations with FEI

On October 2, the National Reining Horse Association (NRHA) announced that it would no longer collaborate with the Fédération Equestre Internationale (FEI) after a series of failed negotiations. The FEI announced in 2020 that it had terminated the original agreement with NRHA but then approved a new "Memorandum of Understanding" in June 2021.

NRHA said that the NRHA Board of Directors, Executive Committee, and Task Force members were "comfortable with that agreement, which would have created a framework for a limited group of international championships." On September 15 of this year, however, FEI sent a draft agreement that was not satisfactory to NRHA. "We are unsure of what led up to this development, and why NRHA was not consulted," NRHA President Rick Clark stated. "At this time, the Executive Committee, with the support of the NRHA Board of Directors, has made the decision to not move forward with a new agreement with FEI."

NRHA Commissioner Gary Carpenter added, "NRHA has worked diligently over the past two

years to collaboratively negotiate a new agreement and made it a top priority for the association.... We remained fully committed to working closely with the FEI and were excited for what the future held. Unfortunately, a lack of direct and clear communication from FEI has been one of the biggest hurdles."

## MHC Sends Letter in Support of Wheaton Park Stables

Montgomery County is updating its Master Plan for Wheaton Regional Park. During a public meeting on September 9, the county said that while the Wheaton Park Stables are safe for now, it is keeping open the option to re-purpose the privately-operated Wheaton Park Stables (WPS) to a different use at some point in the future.

WPS is an Industry Professional member of Maryland Horse Council, and we have urged Montgomery County to keep the stables open. WPS differs from most other equestrian programs in Montgomery County because it is within walking distance of a dense suburban population that is dominated by a demographic that does not typically have access to horses, horse farms, riding lessons, or any exposure to agriculture or rural life. It is also one of the most, if not the most, affordable riding programs in lower Montgomery County, or, indeed, anywhere in the Washington metropolitan area.

WPS is the type of recreational program that Maryland needs more of, and that Montgomery County needs to support. Indeed, it is the policy of both Governor Hogan and the General Assembly that Maryland needs to do a better job of making outdoor recreational activities available to a wider cross-section of our population. For example, last August, the Maryland General Assembly created the State Park Investment Commission to study, among other things, "the extent to which State parks and associated recreational opportunities are adequately accessible to all populations of Marylanders, including low-income Marylanders, those who lack access to a car, and Marylanders with disabilities." See Press Release, House Speaker and Senate President Announce State Park Investment Commission (August 6, 2021). Although this commission is focused on state parks, the issues of equity and accessibility apply to local parks as well.

For more on WPS, see page 46.



Kudos to Hilltop Farm's Oldenburg stallion, Qredit, who recently won the Dressage at Devon Grand Prix and Grand Prix Freestyle CDI-W.

## New CCI4\* in Maryland!

The Board of Directors of the US Equestrian Federation (USEF) approved a list of venues to host CCI4\*-S, CCI3\*-L and Advanced level competitions for the 2023-2027 calendar on October 2. Included on the list of 35 competitions are three in Maryland.

Remaining on the calendar will be the Advanced division at the Fair Hill International in April and the Maryland 5 Star at Fair Hill in October, both located at the Fair Hill Natural Resources Management Area in Elkton.

New to the calendar is the addition of a CCI4\*-S division at The Maryland International, held in July at Loch Moy Farm in Adamstown. This event already holds CCI-S competitions at the one-, two- and three-star levels

## ASPCA Humane Awards

On October 13, the ASPCA celebrated this year's winners of its Humane Awards during a virtual Humane Awards Luncheon. Recipients included the Retired Racehorse Project (RRP) and a Baltimore Rottweiler.

RRP was founded by Stuart Pittman, who is a former President of the Maryland Horse Council and the current County Executive for Anne Arundel County. RRP received the

*continued...*

IF YOU HAVE NEWS, VIEWS OR UPDATES TO CONTRIBUTE, PLEASE SEND THEM TO THE EDITOR at The Equiquery, P.O. Box 610, Lisbon, MD 21765 • FAX: 410-489-7828 • email editor@equiquery.com. Be sure to include your full name, phone number and address. All submissions become the property of The Equiquery.



Maryland Jockey Club

Kudos to 16-year-old Bryson Butterfly, who earned his first win in Maryland as an apprentice jockey on October 8 riding Alpha Queue at Laurel Park in the season opener.

Equine Welfare Award for its efforts in producing the annual Thoroughbred Makeover and National Symposium in Lexington, KY. This event is the world's largest competition for retired racehorses.

Dogtor Loki, a Rottweiler owned by Baltimore resident Caroline Benzel, was named Dog of the Year. Loki is a therapy dog and supporter of health care heroes at the University of Maryland Medical Center. Since the beginning of the COVID-19 pandemic, Loki and Benzel have delivered more than 7,000 "Hero Healing Kits" to local medical professionals as well as raising more than \$100,000 to deliver more kits and other resources to first responders and health care workers.

## MRC Moves to Remove Testing Thresholds for Corticosteroids

*From the Maryland Thoroughbred Horsemen's Association*

The Maryland Racing Commission, on the recommendation of its Equine Safety, Health and Welfare Advisory Committee, has approved a motion to modify a regulation on five corticosteroids to eliminate testing threshold levels and employ level of detection for the substances.

The MRC took the action at its September 23 meeting at Laurel Park. The change will be filed with emergency status and there will be public comment period. Taking into account the regulatory process involved in rule-making, it is anticipated the update regulation will be implemented by November 1.

The five corticosteroids are dexamethasone, prednisolone, betamethasone, isoflupredone and triamcinolone. The current 14-day stand-down period for intra-articular injections will remain in place under 2019 model rules approved by the Association of Racing Commissioners International and Racing Medication and Testing Consortium.

The Equine Health, Safety and Welfare Advisory Committee discussed the proposal at a September 8 meeting as a result of several dexamethasone positives and reports the corticosteroid was being regularly administered by some veterinarians at 48 hours before a race at a lower dose rather than the RMTC-recommended 72-hour withdrawal time at the regular dose.

The committee also recommended that Maryland regulators, in an effort to educate vets and trainers, provide information on how long corticosteroids can linger in a horse's system; advise against deviation from recommended administration times; and point out potential risks to the racehorse.

## Coolers for Charity

U.S. Olympic show jumper McLain Ward of New York and his team at Castle Hill Farm have donated coolers and ribbons from his various wins this summer on the European circuit to six charities around the U.S. One such recipient was Maryland's Goucher College Equestrian Team.

Jennifer Smith, director of Goucher's riding program, told *The Chronicle of the Horse*, that "it's obviously incredibly exciting for our students, many of whom would love to go into the industry in some capacity. Seeing these beautiful coolers on our horses and knowing who they were on last ... just so cool and so inspiring!" Smith said the program plans to put several of the coolers in the school's alumni weekend silent auction to raise money for the program. The school may keep a few as special mementos.

## Days End Earns EQUUS Grant

On September 22, the EQUUS Foundation announced over \$631,000 in grant awards to individuals and charitable organizations throughout the U.S. The grants are part of the EQUUS Foundation's Horse Whisperers program, which is EQUUS's "named awards program for a special group of people and organizations who are inspired by the magical and powerful impact horses have on our lives." The recipients are individuals and organizations "that are committed to ensuring that American horses are safe and live with dignity throughout their lives."

Days End Farm Horse Rescue in Lisbon was awarded the Jackson Family Horse Whisperer

Award. The grant was established in 2020 in honor of the Jackson Family's commitment to horse welfare.

## Brenda Herzog Named Joe Kelly Unsung Hero Winner

*From the Maryland Million Ltd.*

Brenda Herzog has been selected to receive the Maryland Million 2021 Joe Kelly Unsung Hero Award. This award is presented annually by the Board of Directors of the Maryland Million Ltd. to an individual who inspires others with valuable but often unrewarded qualities, such as honesty, hard work and humility.

"I was pretty shocked when I got the call, I was like 'what, why,' I didn't understand, but then they explained somebody had nominated me," said Herzog.

"Not only is Brenda extremely worthy of this award, she is an exemplar of a profile in courage and a life lived in devotion of others," wrote Ross Peddicord, executive director of the Maryland Horse Industry Board, who nominated Herzog for the award.

A lifelong horsewoman, Herzog grew up riding and working in various aspects of the horse industry, and graduated from the renowned Morven Park International Equestrian Institute in Leesburg, Virginia, one of the world's most prestigious riding academies in its day. In her early 20s, she worked as a vet technician and exercise rider for local steeplechase trainers in Baltimore County, where she leased land and opened the doors of her Good to Go Farm in 1990.

But her life was forever changed a year later when she was riding a young racehorse that bolted and ran her into a wall, leaving her with a punctured lung, five broken ribs, a fractured collarbone and a thoracic (T4-T5) spinal injury, which paralyzed her at the chest level. After only three months of strenuous physical and occupational therapy, however, Herzog picked up with life right where she left off and found new ways to continue running her farm.

Since then, she has served as an inspiration to everyone in Maryland's horse community and beyond as she operates a successful boarding and lesson barn in Upperco, MD. She and her husband, Mike, bought and custom-built the facility in the early 2000s.

On top of that, Herzog's farm is one of five that hosts Danny Schuster's Schuster Foundation riding program, which partners with 12 different child care and after-school programs in Baltimore City to teach inner city youth about riding and horsemanship.

To learn more about Herzog, read "Maryland's Local Lady Legends" on [equiery.com](http://equiery.com).

**MORE NEWS ON EQUIERY.COM! SUBSCRIBE FOR FREE!**

**Want *The Equiery* delivered to your home? Become a Maryland Horse Council Member!**

**JOIN.MDHORSECOUNCIL.ORG**



# Delmarva Equine Clinic

Practice Limited to Horses

Janice Sosnowski, DVM  
Michelle Egli, DVM  
Christin Landis, DVM  
Kevin Beaudoin, DVM  
Sara Brunnsden, VMD

1008 South Governors Ave.  
Dover, Delaware  
P. 302-735-4735 • F. 302-526-2749  
www.delmarva-equine.com



Serving Your Horse's Health Care Needs

1021



Go from a busy day to a blissful country setting. Discover it all at Waredaca.com An MHI Discovery Center

1121

## BOWMAN'S CHECKERBOARD CHALLENGE STARTER EVENTS

Series-end Cash Prizes

(Check the Leaderboard on Waredaca.com)

Final Event of the 2021 Series: Nov. 6

LEARN FROM THE BEST EXPERT DAYS

Stephen Bradley Nov. 2

Sharon White Nov. 10

See Latest News on waredaca.com for current COVID guidelines

301-570-4191 • www.waredaca.com

EXPERTS IN SERVICE and CUSTOMER SATISFACTION



# Chapman REINING HORSES



Congratulations to Amanda Yarbrough riding Gunners Rising Star, owned by Don and Evelyn Burgy on winning the NEBT Reining Level 1 Futurity. They were also 3rd in the NRHA level 1, 6th in the NRHA level 2, tied 7th for NRHA level 3.



Dutch Chapman 301-452-4951

Training \* Showing \* Sales \* Lessons \* Non Pro Instruction

Rising Star Farm 443-920-3701

ChapmanReiningHorses.com

1121

We're the low-key dealer with the high quality trailers.

# Traveled Lane Trailers

When we quote a Calico price, it's for a ready-to-use trailer.

No pricing games!



Portax LK - Extra length for more storage!

Premium Aluminum Trailers



Interlocking Aluminum-Tube Walls

You don't need a truck to tow a Böckmann!



Böckmann Ramp/Door Ramp and Step-Up loading in one trailer!

Traveled Lane Trailers, Inc. Centreville, Maryland

410-556-6850

www.traveledlanetrailers.com

0320

Sales • Service • Hitches • Accessories • Financing

# Equiery Holiday Gift Guide

Apparel, Authors, Crafts, Giftware, Tack, Trailers and More!



'Tis the season of giving... and buying... and *The Equiery's* advertisers have something for everyone on your list! You can find everything from tack items to trailers to lessons and so much more on the following pages. Just in case you need some help generating ideas for your horse-loving family and friends, *The Equiery* polled its readers to find out what is on the top of their holiday wish lists.

The number one item that *Equiery* readers are looking for this holiday season is riding apparel followed by a new horse or pony. Third on our holiday survey list was a tack item. Some of the more specific items that readers wrote in were custom jump saddles, a Ford F-350 diesel dually, an Iceland Horse and vaccination against COVID for ages 5 and up world-wide.

Want to be included in this Gift Guide? It is not too late!  
Call Tracy at 800-244-9580 to be included in our December Gift Guide.

## Believing in Horses



**Fall & Winter 2021 - 2022**

<p><b>X DERBYSTM</b></p> <p>Dec. 4-5 Donation Derby Jan. 8-9 MDHT Winter X Derby</p>	<p><b>SCHOOLING</b></p> <p>X Derby Course Schooling Starts in November <i>(All-Weather Footing, Water, Banks &amp; Ditches)</i> XC Schooling Course - Open Year Round</p>
--	---

**WE'VE GOT GREAT GIFTS FOR PEOPLE WHO LOVE COMPETING AT LOCH MOY**



Caps, Coats, Fleece,  
Puffy Vests & Coats,  
Jackets, 1/4 Zips,  
T-Shirts and more  
•Gift Certificates Available•

Email [mdhorsetrials@gmail.com](mailto:mdhorsetrials@gmail.com) to find out more

Proud Member of the Maryland Thoroughbred Eventing Series - [www.MDTEventing.com](http://www.MDTEventing.com)

Be A Volunteer! Visit [www.eventingvolunteers.com](http://www.eventingvolunteers.com) to learn more and sign up!  
Dates subject to change without notice, please check websites for up-to-date event information and listings.

[www.lochmoyfarm.com](http://www.lochmoyfarm.com) • [www.themarylandhorsetrials.com](http://www.themarylandhorsetrials.com) • 301-514-0111 • 1235 Park Mills Road • Adamstown, MD



4502 Old National Pike Mt Airy, MD ♦ [STABLEMATESINC.COM](http://STABLEMATESINC.COM)  
800-696-5560 ♦ 301-829-0333

**EXCLUSIVE COUPON**

**BUY 1-GET 1 50% OFF\***

**ALL WINTER RIDING APPAREL\*\***

MUST PRESENT COUPON FOR DISCOUNT! EXPIRES 11/24/2020

\*Purchase 1 item at regular price. Get 2nd regular priced item of equal or less value at 50% off. Discount excludes sale items. \*\*Winter Apparel Items include: Winter Hats, Winter Gloves, Winter Socks, Winter Riding Pants, Sweaters, Long Sleeve Shirts, Jackets & Scarfs.

Follow us on Social Media   @Stablemates Saddlery

**THANKSGIVING WEEKEND SALES EVENT!**

November 26th - 28th, 2021

**15-20% Off STOREWIDE**

Sale Limited to Items In-Stock Only. No Special Orders or Rain Checks. Excludes Price Locked items, Clippers, Blades, Repairs, Blanket Washes, and items already marked on sale.

Happy Thanksgiving

WE WILL BE **CLOSED**, THURSDAY, NOV. 25TH  
TO CELEBRATE WITH OUR FAMILIES!



If you are considering a charitable contribution this holiday season, please consider one of these Maryland Horse Council member charity organizations.

Brave HEART Program Inc. (Hagerstown).....	<a href="http://www.braveheartriding.org">www.braveheartriding.org</a>
Carroll County Equestrian Council (Westminster) .....	<a href="http://www.carrollcountyequestriancouncil.org">www.carrollcountyequestriancouncil.org</a>
Chesapeake Therapeutic Riding, Inc. (Abingdon) .....	<a href="http://ctrchanginglives.org">ctrchanginglives.org</a>
Cloverleaf Standardbred Owners (Temple Hills).....	<a href="http://www.cloverleafsoa.org">www.cloverleafsoa.org</a>
<b>Days End Farm Horse Rescue (Lisbon) .....</b>	<b><a href="http://www.defhr.org">www.defhr.org</a>.....see pg 22 &amp; 48</b>
Equestrian Partners in Conservation (Boys).....	<a href="http://www.epicmontgomery.org">www.epicmontgomery.org</a>
February Star Sanctuary (Knoxville).....	<a href="http://www.facebook.com/Februarystarsanctuary/">www.facebook.com/Februarystarsanctuary/</a>
Fox Lea Mini Horse Rescue (Dickerson).....	<a href="http://www.foxleamini.org">www.foxleamini.org</a>
<b>Freedom Hill Horse Rescue (Dunkirk) .....</b>	<b><a href="http://www.freedomhillhorserescue.com">www.freedomhillhorserescue.com</a>.....see pg 48</b>
<b>Gentle Giants Draft Horse Rescue (Mount Airy).....</b>	<b><a href="http://www.GentleGiantsDraftHorseRescue.org">www.GentleGiantsDraftHorseRescue.org</a>..see pg 48</b>
League Of Maryland Horsemen (Woodstock) .....	<a href="http://www.leagueofmarylandhorsemen.com">www.leagueofmarylandhorsemen.com</a>
LeCheval Stable Therapeutic Riding & Counseling (Glenwood) .....	<a href="http://www.lechevalstable.org/">www.lechevalstable.org/</a>
<b>Lifeline Horse Rescue and Rehabilitation, Inc. &amp;</b>	
<b>Lifeline Equine Therapy Services (Gaithersburg).....</b>	<b><a href="http://www.lifelinehorserescue.org">www.lifelinehorserescue.org</a>..... see pg 48</b>
Maryland 4-H Program (College Park) .....	<a href="http://www.maryland4h.org">www.maryland4h.org</a>
Maryland Council of Equestrian Therapies (Catonsville) .....	<a href="http://www.marylandequestriantherapies.org/">http://www.marylandequestriantherapies.org/</a>
Maryland Equestrian Foundation &	
Rosaryville Conservancy (Upper Marlboro) .....	<a href="https://dnr.maryland.gov">https://dnr.maryland.gov</a>
<b>Maryland Fund For Horses (Westminster) .....</b>	<b><a href="https://www.mdfundforhorses.org/">https://www.mdfundforhorses.org/</a>.....see pg 14</b>
<b>Maryland Horse Council Foundation (Lisbon) .....</b>	<b><a href="https://mdequinetransition.org/">https://mdequinetransition.org/</a> .....</b> see pg 16
Maryland Steeplechase Association (Lisbon).....	<a href="http://www.marylandsteeplechasing.com">www.marylandsteeplechasing.com</a>
Meadowbrook Stables (Chevy Chase).....	<a href="http://www.meadowbrookstables.org">www.meadowbrookstables.org</a>
<b>Middle Ridge Animal Rescue, Inc. (Middletown).....</b>	<b><a href="http://www.middleridgeanimalrescue.com">www.middleridgeanimalrescue.com</a> .....</b> see pg 48
<b>Potomac Valley Dressage Assoc Inc (Damascus).....</b>	<b><a href="http://www.pvda.org">www.pvda.org</a>.....</b> see pg 32
Rose of Sharon Equestrian School, Inc. (Glen Arm) .....	<a href="http://roseofsharonschool.org/">http://roseofsharonschool.org/</a>
<b>Safe Haven Equine Warriors (Sykesville).....</b>	<b><a href="http://www.safehavenequinewarriors.org">www.safehavenequinewarriors.org</a>.....</b> see pg 48
Talisman Therapeutic Riding, Inc. (Grasonville) .....	<a href="http://www.talismantherapeuticriding.org">www.talismantherapeuticriding.org</a>
Therapeutic & Recreational Riding Center, Inc (Glenwood) .....	<a href="http://www.trrcmd.org">www.trrcmd.org</a>
Trail Riders of Today (Finksburg) .....	<a href="http://trot-md.org">trot-md.org</a>
Tuckahoe Equestrian Center (Centreville).....	<a href="https://www.tuckahoequestriancenter.com/">https://www.tuckahoequestriancenter.com/</a>
Washington International Horse Show (Washington, D.C.).....	<a href="http://www.wihs.org">www.wihs.org</a>

Maryland law requires that all entities soliciting donations be registered with the Maryland Secretary of State's office. Registration does not imply or grant non-profit status. To verify a charity's registration compliance, visit <https://sos.maryland.gov/Charity/Pages/default.aspx>

Not all donations to charities and non-profits are eligible as tax deductions. Please remember to check with your tax professional about the status of any donations you make. For more information about taxes, see pages 20 & 21 in this issue.

**JOIN.MDHORSECOUNCIL.ORG**

# Got internet horse sense?

**Wanted:** horse lovers to volunteer a few hours to help Maryland Fund For Horses update our online equine resources. You'll need a library card, internet access, basic spreadsheet skills, and a love for horses! Can earn volunteer hours. Contact [volunteer@mdfundforhorses.org](mailto:volunteer@mdfundforhorses.org) or call: 410-861-0406 to volunteer!



## Maryland Fund for Horses

Doing the Right Thing For Maryland Equines



1121

Maryland Fund For Horses is a 501(c)(3) public charity. Monetary and in-kind donations are tax-deductible to the extent allowed by law.

**HORSES FOR THE SOUL**  
HUMAN. NATURE. NURTURED. MONKTON, MD

Talk to someone you trust. Horses: not just for riding any more.



### GUIDANCE, HEALING and EMPOWERMENT THROUGH HORSES

**Nov. 7 - Meet & Greet the Horses - for Students**  
Find out how horses teach us how to manage in a hectic world.  
12pm - 2pm | Snacks & Horse Love Provided | \$25  
Register by email or phone.  
[www.horsesforthesoul.org](http://www.horsesforthesoul.org)  
CONTACT: Ashley Shultz • [ashley@horsesforthesoul.org](mailto:ashley@horsesforthesoul.org) • 206-229-2130

1121

## Building Your Dreams; Preserving Your Legacy



Horse Barns • Indoor Arenas • Bank Barns • Restoration • Wineries

[PRECISEBUILDINGS.COM](http://PRECISEBUILDINGS.COM) | 717.768.3200

0921



# One of the **LARGEST HORSE TRAILER INVENTORIES** on the East Coast!



# Kingdom Horse Trailers LLC



## 2022 Hart 4 Horse Slant 15' Living Quarters

### Call for Pricing & Financing



Showroom hours are Monday - Friday 9-5 • Saturday 9 - 2.

## We Can Deliver Trailers Right to Your Doorstep Nationwide HUGE Inventory • Financing

213 E. Jarrettsville Rd. • Forest Hill, MD 21050

**(443) 640-6333 • [KingdomHorseTrailers.com](http://KingdomHorseTrailers.com)**

Join our new VIP Text family and be the first to see our new arrivals.  
Using your cell phone, text the word HORSE to 31996 and move to the front of the line for new trailers!





**GIVING  
TUESDAY**



**Take a stand against  
Horse Slaughter and  
support equine  
welfare by donating  
to METS today!**

The Maryland Breeders Association graciously agreed to match donations made during Giving Week, November 22-28th.  
[mdequinetransition.org/donate/](http://mdequinetransition.org/donate/)



**MARYLAND EQUINE  
TRANSITION SERVICE**

A PROGRAM OF THE MARYLAND HORSE COUNCIL FOUNDATION



Gentle Giants Draft Horse Rescue is the primary financial supporter of the Maryland Equine Transition Service

1121

**Custom Chaps & Leggings**

English, Western, Motorcycle

In Time  
For Christmas



We  
Carry



Protect your legs  
and keep your pants  
clean while you work

**Chaps ordered before Christmas - \$350**  
Any Color, Any Size, Smooth or Split • Lifetime Guarantee  
Custom Belts, Saddlebags & Strap Goods also available

**Outback Leather**  
309 Main Street • Laurel, MD  
301-604-2211  
[outbackleather@aol.com](mailto:outbackleather@aol.com)  
[www.mdoutbackleather.com](http://www.mdoutbackleather.com)

1220

8th Annual

**MOUNT HARMON PAPER CHASE**

\$30 Pre-Register  
\$35 Day of  
Registration

Proceeds benefit  
the ongoing  
preservation of  
Mount Harmon



**SUNDAY, NOV. 14**

**Start Anytime  
10 am - 1 pm**

**Mount Harmon  
600 Mount Harmon Rd.  
Earlville, MD  
(rain date Nov. 21)**

- 7 miles of scenic, marked turf trails w/natural log jumps (all optional) on a beautiful historic site along the Sassafras River
- Register in teams of 1 - 6 riders. Ribbons for the top 3 teams closes to the optimum time.
- Drive all the way in the 2.5 mile lane to parking & registration. Coggins please.
- Due to Covid regulations, no food will be provided, but please bring your own picnic!
- Register in advance online, Stay Safe & Save!

410-257-8819 for more info or in case of inclement weather  
[www.mountharmon.org](http://www.mountharmon.org) | [info@mountharmon.org](mailto:info@mountharmon.org)

1211

**St. Francis Pet Medals**

Artisan-designed St. Francis Pet ID Tag  
makes a divine gift for pets and pet lovers

You can help protect a dog, cat or horse with an engraved  
St. Francis Pet Medal in durable brass or silver-plate.



1121

Visit  
[www.stfrancispetmedals.com](http://www.stfrancispetmedals.com)  
to learn more or to order  
(A portion of each sale is donated to animal shelters)

**GREAT GIFTS  
FOR ANIMAL LOVERS!**

PRICES:

(1" & 3/4" in diameter)

\$23.99 with engraving (any size)

\$17.99 without engraving (any size)



# Maryland Rescue Southern Maryland Equine Miracles

by Katherine O. Rizzo

In 2017, Melinda Burdin of Chaptico and a small group of Southern Maryland friends decided they wanted to use their empty stalls to help horses in need. They drove up to Pennsylvania and purchased three horses that were slated for a kill pen and took them home. "We thought that as long as we had the space, why don't we help a horse in need," Burdin stated. They did not, however, stop with just those three horses. "We wanted to do more," she said, and in May 2018, the group of friends founded Southern Maryland Equine Miracles, Ltd. Later that year, the organization was approved as a 501(c)(3) non-profit equine rescue.

## Building a Network

"We started out very small, and were very novice in what we knew about rescuing horses," Burdin said. "But we have learned a lot along the way even while remaining a small rescue." Southern Maryland Equine Miracles, S.M.E.M for short, does not have a base location, or a permanent sanctuary for its rescues. The group of three board members and four volunteers house horses at private farms. "We quarantine at my home and then find foster farms in the local community," Burdin explained. "I like to think of us more as a networking community than a rescue."

S.M.E.M.'s network quickly grew to include not only the residents of Calvert, Charles and St. Mary's Counties, but other equine networking rescue groups in Maryland such as Maryland Association of Rescues and Equine Sanctuaries (MARES) and Maryland Equine Transition Service (METS). "We joined MARES, which is a huge help with networking," she said, adding, "and I've been helping out with METS horses down in our area."



**S.M.E.M works with other equine rescue organizations, like Lifeline Rehabilitation and Rescues, pictured here with a mare named Gloria. S.M.E.M prevented Gloria from going to auction and then Lifeline trained and rehomed the mare.**

In addition, S.M.E.M has partnered with larger equine rescue operations to help with the training of rescue horses after they have been rehabilitated. "Gentle Giants [Draft Horse Rescue] offered us 90 days worth of training with one of their trainers, and we have been sort of the in-between rescue for some horses placed through Lifeline [Horse Rescue and Rehabilitation]," Burdin stated.

Burdin also stated that they work a lot with Freedom Hill Horse Rescue, which is the closest equine rescue to the area that S.M.E.M tends to cover. "I like to think of Freedom Hill as our sister rescue because they serve the same community as we do," she said. "We wouldn't be here today without the mentorship from these larger rescues."

## Education

Although S.M.E.M got started by purchasing horses directly from a kill pen at an auction, today, the organization has transitioned more towards education and preventing horses from reaching kill pens. The organization's mission statement reads:

"We are a non-profit organization focusing on ending the shipment of American horses for the purpose of slaughter and human consumption. We support legislation for that goal and are dedicated to helping horses in need and placing them in loving, forever homes. We strive to educate the public on how horses end up in kill pens and how they can protect their equine pets. Remember, any horse that is sold can end up at slaughter."

Burdin explained, "We have been much more active in personal surrenders versus going to auctions now. It's more like 'auction interceptions' to stop the horse even getting to the auction."

Getting their mission statement and goals out to the general public was a bit difficult at first, with S.M.E.M relying primarily on word of mouth and phone calls to various members of its ever-growing network. But then earlier this year, the organization got a huge boost through an unusual source.

## Training for Value

It is not uncommon for horse shows and other equestrian competitions to donate funds to local charities. Many of the big shows such as last month's Washington International Horse Show and the Maryland 5 Star at Fair Hill have charity partners that they raise funds for. It is however, a bit unusual for an entire show series to be created with the sole purpose of raising funds for a charity.

Enter stage left... Julie Call of Free Rein



**S.M.E.M. Vice-President Clara Colie and President Melinda Burdin with rescue horse Ultimate Sun.**

Equine, LLC in Hollywood, Maryland.

Call grew up in St. Mary's County as a horse hungry girl but left the state looking for bigger and greener pastures. She ended up in Ocala, Florida, where she immersed herself in the Hunter/Jumper world rising up the ranks to trainer of her own facility. "I came back to Maryland for family reasons three years ago and got involved with S.M.E.M because of our common interests," Call said, adding, "I started retraining a few rescues on my own to be lesson-type horses for my program."

Call reached out to Burdin last year and offered to train a pony named Milkshake at a "great discount," according to Burdin. "Milkshake has become like a mascot for us and people ask about her all the time!"

When Milkshake first arrived at Free Rein Equine, Call said she would rear for the farrier, wouldn't stand still, and had a hard time cantering under saddle. "Consistency and care" is Call's motto and now a year later, Milkshake is showing with kids and winning. "She's very good for the kids and showed her first time over fences at BEST earlier this year," Call added. "She didn't win but she went in the ring and did her job."

Having a job is what Call feels is the most important part of working with rescue horses. "Milkshake is now earning her keep. We secure them a life and they become valuable now," she said. As of press, Milkshake is remaining at Free Rein Equine as a lesson and show pony.

"I can help a horse get physically healthy, but it is people like Julie who can do the training and make these horses adoptable," Burdin added.

## Showing Rescue Horses

Call's involvement with S.M.E.M quickly grew when she suggested hosting a series dedicated to raising funds for the organization, though the series turned out to solve another problem other than showcasing rescues.

"The 4-H shows in Southern Maryland are starting to die out," Burdin stated, also pointing out that many of those who organized those shows have retired. "Kim Gladwell ran

*continued...*

## Maryland Rescue: Southern Maryland Equine Miracles, continued...

the Mounted Wanderers 4-H Club and ran the 4-H Horse and Pony Show at the fair for over 30 years and just isn't able to do it any longer." This is pushing those that want to show to travel further, increasing the cost of each show.

"The cost of showing is often too much for the average family," Call added. "We never had a ton of money when I was growing up but I did the best I could with what I had." That is the message Call wants to pass on to the next generation of horse crazy kids. In addition, Call stated that most people tend to point out problems without offering a solution. "We need to be part of the solution," she said.

Call stepped up and created a local show se-

ries that was more affordable and offered special classes for rescue horses. "The whole thing was Julie's idea. I can't take any of the credit. It was all her!" Burdin said with a laugh. The schooling show series was held at Oakridge Park in Dentsville, managed by Charles County Parks & Recreation.

The four-show series offered both English and Western classes with eight classes being open only to rescue horses. "All entry fees for those classes go to S.M.E.M.," Burdin said. "We also set up a booth at each show and do most of our public outreach through these shows."

"It has been very successful," Call said. "It just goes to show you that when you look outside

the box, good things will come."

At each show, a Rescue Champion is crowned with one Grand Champion Rescue Horse being named at the end of the series. The individual winners this year were Elmer, owned by Free Rein, LLC; Irish Comedienne, owned by Jessica Kilcoyne-Beaver; Ginger, owned by Trudy Prenger and War and Thunder, owned by Caroline Lebo. This year's overall series winner was S.M.E.M.'s own Milkshake!

The series also offered a Rescue Showcase where other rescues could bring adoptable horses for demonstrations to help get those horses adopted. "So far only Freedom Hill has come down, but I understand that... we are fairly far for most of the large rescues," Burdin stated. "Most of those entering the rescue classes are our own locals but I'm hoping more people will get involved next year," Call said.

Due to the vast number of entries in 2021, the 2022 series will offer eight shows, separating English and Western classes into four shows each. Which gives S.M.E.M and all equine rescues who attend double the opportunities to showcase the value of rescued horses and to continue to facilitate moving horses into new homes through a vast community network of people like Burdin and Call. "It's like working together for the greater good of the community," Call concluded.

**One special rescue named Milkshake has become S.M.E.M.'s mascot and is now a successful lesson and show pony with trainer Julie Call of Free Rein Equine, LLC.**



## The Great Lisbon FARMERS FEED THE HUNGRY Christmas Parade



*Tractors at Noon - Horses to Follow*

**Saturday, December 11, 2021**

"Main Street" (Route 144) Lisbon, MD Western Howard County

**Featuring Saddle Horses, Carriage Horses & Horse Power (Tractors)**

*presented by* The Howard County Farm Bureau

### Parade Proceeds

Howard and Carroll County Food Banks  
Farmers & Hunters Feeding The Hungry  
Lisbon Volunteer Fire Department  
*Donations of canned and dry goods appreciated.*



**Attention Horses  
Registration Now Open!**  
Check the website for details.

[www.lisbonchristmasparade.com](http://www.lisbonchristmasparade.com)







# Rippeon Equipment Co.

**RIPPEON**  
EQUIPMENT CO.

## FREDERICK

9640 Liberty Road  
Frederick, MD  
866-747-7366

## GAITHERSBURG

700 East Diamond Avenue  
Gaithersburg, MD  
866-747-7366

## WESTMINSTER

1115 Baltimore Blvd.  
Westminster, MD  
866-747-7366



### **BX2380**

- Liquid-Cooled, 3-Cylinder Diesel Engine
- HST Transmission (2F/2R)
- Hydrostatic Power Steering
- Wet Disc Brakes
- 4WD



**FINANCING AVAILABLE**

**See Us For All Your Kubota Needs**

[www.rippeonequipment.com](http://www.rippeonequipment.com)

**FULL LINE OF PARTS**

**PICK UP AND DELIVERY AVAILABLE**

**SERVICE EXCELLENCE AWARD**



Rippeon Equipment has a new phone number • 866-RIPPEON (866-747-7366) • Three Stores - One Number!

### Taxes and Horses

It's that time of year when non-profits hope for end-of-year donations and taxpayers look for tax deductions. As a result, we put together this primer on the different kinds of non-profits most common in the horse industry.

Whether an organization qualifies as a non-profit is a question of federal tax law. The section of the tax code that explains the various types of non-profits is 26 U.S.C. § 501. That is why you hear so many people referring to non-profits as "501s."

**Charities:** The most common type of non-profit in the horse industry is the 501(c)(3) organization. 501(c)(3) status is generally available for any corporation that is "organized and operated exclusively for . . . charitable . . . or educational purposes," or to "foster . . . amateur sports competitions," or to "prevent cruelty to animals to children."

Charitable organizations do not have to pay federal income taxes and do not have to pay Maryland property taxes. Maryland charities are also exempt from paying sales tax, as long as the corporation has applied for and received a certificate of tax exemption from the Office of the Comptroller.

The major limitation on charities is that "no substantial part of the[ir] activities" can consist of "attempting to influence legislation . . . or interven[ing] in (including the publishing or distributing of statements), any political campaign on behalf of (or in opposition to) any candidate for public office." In plain English, this means that, generally speaking, charities must keep their lobbying expenditures under 20 percent of their total expenditures.

**Trade Associations:** Another type of non-profit common in the horse world is the 501(c)(6) corporation, which includes "business leagues." IRS explains that a "business league is an association of persons having some common business interest, the purpose of which is to promote such common interest and not to engage in a regular business of a kind ordinarily carried on for profit." IRS defines "business leagues" to include trade associations.

The Maryland Horse Council is a trade association, and so this is the chapter of the tax code under which we are organized. The American Horse Council, the trade association for the national horse industry, is also a 501(c)(6).

Trade associations can engage in an unlimited amount of lobbying provided the lobbying furthers their tax-exempt purpose. For example, MHC can (and does) engage in unlimited lobbying on issues that affect the Maryland horse industry without jeopardizing its tax status.

**Social Clubs:** The last type of non-profit common in the horse industry is social clubs, which IRS defines as membership clubs organized for "pleasure" or "recreation." Trail riding clubs, hunt clubs, polo clubs, and the like can qualify for 501(c)(7) status. The only real limitation on social clubs is that "substantially all" of their activities must be for the pleasure or recreation of their members.

We always recommend that you consult your financial adviser on any issue relating to taxes. We also caution readers that not every charitable donation is tax deductible, and whether a donation is tax deductible or not depends on your individual financial situation.

[JOIN.MDHORSECOUNCIL.ORG](http://JOIN.MDHORSECOUNCIL.ORG)

### Now Accepting Show Team Boarders!



Stall & Field Boarding,  
Lessons, Camp.

Hunter Jumper  
Lessons & Sales.

Indoor, Outdoor,  
Trails, Show Teams.

Deana Tice, Brittany Tice and Hailey Johnson


Harwood, MD • 410-798-4980  
[www.enticementstables.com](http://www.enticementstables.com)

0921

A MARYLAND HORSE COUNCIL PUBLICATION

# EQUIERY

[www.equiere.com](http://www.equiere.com)



Free Subscription & Ad Specials with your MHC Membership

**Join Today!**

Learn about other great benefits at [www.MDHorseCouncil.org](http://www.MDHorseCouncil.org)





# AMERICAN HORSE COUNCIL'S TAX BULLETIN

## Charitable Donations in the Equine Sector

By T. Randolph Catanese, Esq., for the American Horse Council's September 2021 Tax Bulletin

The American Horse Council produces a quarterly Tax Bulletin to keep members up to date with important tax court cases and regulations. The most recent bulletin relates to horses or other property being given as a charitable contribution. We thought this would be a helpful adjunct to our Government Relations column on non-profits.

### Deduction for Donating a Horse to Charity

If a horse or other property is given as a charitable contribution, the donor may generally deduct the fair market value of the property. However, when property given to a charity would result in ordinary income to the donor if the property had been sold instead, the amount of the gift must be reduced by the amount of the ordinary income that would have been reported by the donor had the property been sold instead of donated. Also, if a horse that is eligible for capital gain treatment has been depreciated and is then donated to the charity, the amount of the gift is the value of the horse reduced by the amount of depreciation recapture. The deduction amount must also be reduced if gifted tangible personal property does not in some way relate to the purposes that give rise to the charity's tax exemption.

The equine gift may not be in exchange for a financial or other economic type of benefit. In addition, a written appraisal performed by a qualified appraiser is generally required for each horse (or other property) donated when the claimed charitable contribution deduction is in excess of \$5,000.

### Deduction by an Individual

An individual may claim an itemized deduction for contributions to a qualified charitable organization (Schedule A-Form 1040). The charitable deduction in any tax year is limited to a percentage of the taxpayer's contribution base determined by the type of organization receiving the donation and the type of property donated. Any excess in the tax year may

be carried forward for 5 years. If married individuals file a joint return, the percentage limitation depends on the aggregate contribution base of both spouses. A limit also applies to the amount of the charitable deduction allowed for gifts of appreciated property and is imposed before applying the percentage limitation.

Generally, the percentage levels for an individual are:

- 60% of the taxpayer's contribution base for contributions of cash for tax years 2018 through 2025 to public charities
- 30% of the taxpayer's contribution base for contributions of capital gain property to public charities
- 50% of the taxpayer's contribution base for contributions of cash before 2018 and ordinary income property to tax exempt organizations
- For contributions of ordinary income property to qualified charitable organizations other than public charities, the lesser of 30% of the taxpayer's contribution base or the excess of 50% of the taxpayer's contribution base for the tax year over the amount of charitable contributions qualifying for the 50% deduction ceiling, including carryovers
- 20% of the taxpayer's contribution base for contributions of capital gain property to qualified charitable organizations that are not public charities

For tax years beginning in 2020 only, an eligible individual may claim an above-the-line deduction in computing adjusted gross income of up to \$300 for any qualified charitable contribution in response to the COVID-19 crises. (CARES Act IRC Section 62(a)(22), and (f)(1).)

The 60% limitation on the deduction of charitable contributions of cash by individuals is suspended for qualified charitable contributions made in 2020 in response to COVID-19. An individual may deduct any qualified cash contribution as long as the contribution does not exceed the individual's contribution base (100%) and any excess may be carried forward

for 5 years. (CARES Act Section 2205(a)). There are limitations depending on the organization's status as a charity.

If the taxpayer is a partner in a partnership or a shareholder in an S corporation, the election to claim the deduction with respect to the qualified contribution is made by the partner or shareholder.

### Deduction by a Corporation

A corporation's deduction for charitable contributions is limited to 10% of its taxable income for the year (25% for qualified contributions in 2020) calculated without regard for items like deductions for dividends, deduction for a bond premium, and any net operating loss or capital loss carryback to the tax year.

Corporate donors that qualify as farmers or ranchers may deduct certain qualified conservation contributions of real property interests up to the excess of the donor's taxable income over all other allowable charitable contributions.

Charitable contributions that exceed the 10% limit may be carried over the corporation's 5 succeeding tax years. But deductions in those years are also subject to the maximum limitation (IRC Section 170(d)(2)). And, except for the carryover rule, a deduction is allowed only for the charitable contribution paid during the tax year.

### Conclusion

A corporation's deduction for charitable contributions is limited to 10% of its taxable income for the year (25% for qualified contributions in 2020) calculated without regard for items like deductions for dividends, deduction for a bond premium, and any net operating loss or capital loss carryback to the tax year.

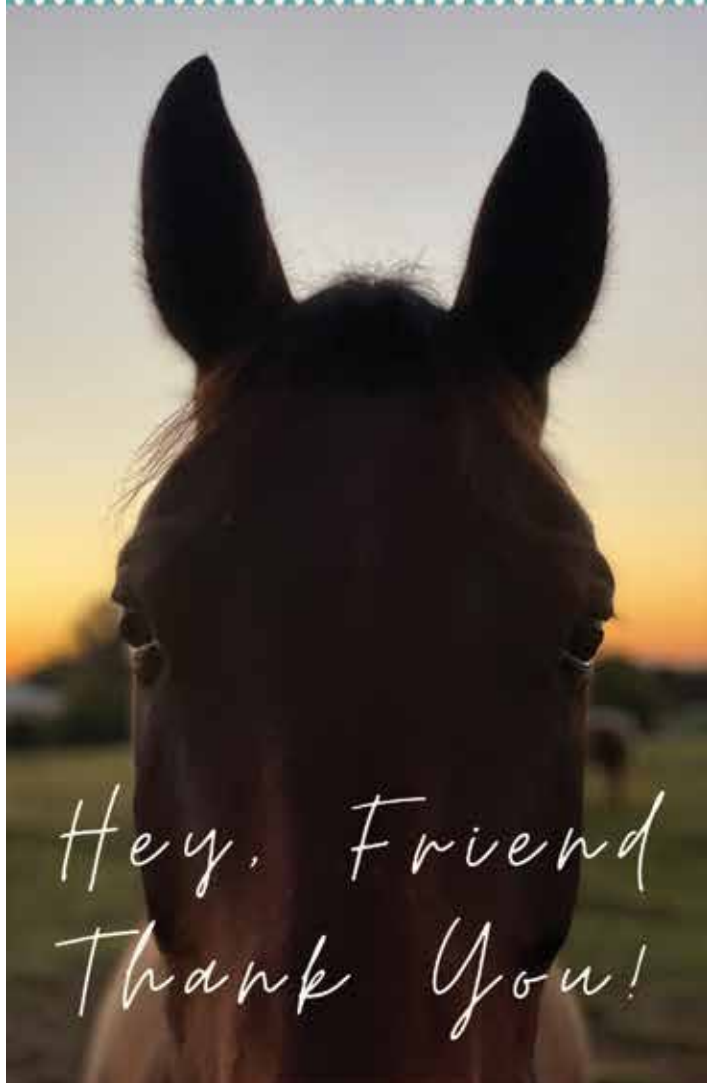
Corporate donors that qualify as farmers or ranchers may deduct certain qualified conservation contributions of real property interests up to the excess of the donor's taxable income over all other allowable charitable contributions.

The American Horse Council's Tax Bulletin is sponsored by Zoetis and has been reprinted here with permission from AHC. For more information, visit: [www.horsecouncil.org](http://www.horsecouncil.org).

We are so grateful to YOU, our supporters! Your donations help us continue our important life-saving work on behalf of horses in Maryland and beyond.



FIND OUT MORE AT DEFHR.ORG



Hey, Friend  
Thank You!

**H.C. SUMMERS** FARM HOME GARDEN *Check-R-Board Days*

# HORSE WEEK NOV. 8 - 13

## \$3 OFF PURINA® HORSE FEED

\*Maximum 20 bags purchase



## \$5 OFF PURINA® HORSE SUPPLEMENTS

\*Maximum 10 bags purchase



**BUY 2, GET 1 FREE  
PURINA®  
HORSE TREATS**



**BUY 1, GET 1 FREE  
PURINA®  
OMEGA MATCH™**

**RATION  
BALANCING  
HORSE  
FEED**



**FILL THE BUCKET BONANZA**  
BUY ONE 5 GALLON BUCKET  
FILL WITH ANY PRODUCT  
IN STORE & GET  
**20% OFF**

**\$100 Gift Card  
Weekly  
Give-A-Way**

## IN STORE ONLY

4002 Jefferson Pike • Jefferson, MD

**301-473-8300**

[www.hcsummers.com](http://www.hcsummers.com)



# Learning the Language of Equus

By Katy Whipple

In May 2021, I had the privilege of spending three weeks as an intern at the Monty Roberts Mustang and Transition Horse Program (MRTHP), housed at Flag Is Up Farms in Solvang, California. I learned about Roberts's methods and how his team is able to meet the individual needs of the horses in the program.

MRTHP was created to help Right Horse adoption partners make their horses more adoptable through retraining and remediation, depending on the needs of each individual horse. The program teaches interns about the language of Equus, which is how Roberts describes the way horses communicate. Interns learn how Equus allows humans to "talk" to horses in their care more effectively and in a non-threatening way. Successful communication between human and horse, as is the case between human and human, makes the partnership more solid and more productive, and sets the partnership up for success.

I had the opportunity to work with a wide range of horses: freshly off-the-track Thoroughbreds, highly trained western show horses, stoic mustangs, sassy ponies, and a terrified and untrusting feral horse. The power of Equus is that it is universal to horses. It is the language that herd matriarchs use to communicate with and control their herd, and it is taught to every foal by its dam. Equus was effective no matter which horse I worked with at the farm. I saw how even the smallest change in my communications led to immediate results—a couple of shallower, quicker breaths, for example, would cause the horse to speed up. The principles are constant, and the key is to become fluent in those principles so as to be clear, confident, and communicative with the horse.

One of the more challenging and rewarding horses in the program while I was there was Poppy, an OTTB mare. This sweet girl was tough to

connect with. She was highly distractible, and she would move around the enclosed round pen with her head up, trying to catch a whiff or glimpse of whatever was going on outside. Our instructor, Simon D'Unienville, my fellow intern Bonnie McRae (from After the Races, a Maryland nonprofit rehabbing and rehoming center for OTTBs and a Right Horse partner), and I tried unsuccessfully to Join-Up with Poppy. She had a hard time focusing long enough to commit to the relationship we were offering.

Toward the end of my internship, we brought Poppy in to complete the Right Horse's Basic Behaviors Profile. We decided to try a Join-Up with her again, and it was my turn to try. I had learned enough at this point to follow the horse rather than push the horse, so my expectations were low. She had been through the phases that lead to Join-Up a few times already, so we hoped latent learning had taken effect and she was ready for the next step. My three weeks of education and practice may have made me a better communicator. I was certainly clearer in my language. The combination of her latent learning and my improved communication skills was the ticket. We completed a Join-Up! When she turned and took a step toward me—the moment of Join-Up—my mouth dropped, and I quickly had to compose myself so I wouldn't lose her. What a gorgeous moment that was, to be the person that this otherwise challenging mare had agreed to converse with.

Another highlight of my time at Flag Is Up was my work with Starlight. Starlight was a troubled mare who we suspect had been used in tripping, a barbaric and traumatic practice where a galloping horse is lassoed around the front legs and caused to crash to the ground. Understandably, Starlight was terrified of humans, and her owner, who had purchased her from a kill pen, had been unable to handle her for the whole six months she'd owned her. Once Starlight came to Flag Is Up, we worked with her twice a day every day. The main priority was to help her accept a trim because her feet were in bad shape. We covered a lot of ground with her in the less than two weeks we had her before I came home. When she arrived she had a 30-foot bubble: under no circumstances were humans allowed in that bubble. By



Poppy and Katy after their successful Join-Up

the end of the first day, with the help of the Monty Roberts Gentling Facility, she accepted a halter and line, she was leading with a good amount of comfort, and she was allowing touches outside the chute. Just a few days later, she was following us at liberty, albeit cautiously, around the gentling pen; she was allowing touches down her legs; and was she much less reactive to our general presence.

Starlight was different from the rest of the horses in the MRTHP because she was in need of so much rehabilitation

and recovery from her presumed past abuse. She came with a lot of baggage, and we had to convince her it was okay to let go of that baggage. Using the Monty Roberts Gentling Facility meant that we could safely and effectively show her that we didn't mean her harm. Our touches weren't going to hurt. Our lines and halters didn't make her fall. She was safe. While she remained skeptical for a while, she quickly trusted us to do basic things with her. It is humbling to work with animals who have experienced so much trauma at the hands of humans—they can be so generous with their trust. Showing them safety and love is life changing, for both them and us.

I hope that my work with Poppy, Starlight and the other MRTHP horses at Flag Is Up Farms helped them transition to their next careers. The work also made a lasting impact on me both personally and professionally. The language of Equus helped me to understand more accurately the experience level of the horses I was handling in my work as the Assessments Specialist at the Maryland Equine Transition Service. It is also helping me in my new position as the Supporter Engagement Coordinator at Days End Farm Horse Rescue. I can now discuss the more subtle behaviors of the horses we may see on tours, and what horses may be experiencing in their rehabilitation and training journeys. This helps the supporter and the horse connect.

My time at Flag Is Up Farms was invaluable, and I hope I will have the opportunity to visit again. The promise the language of Equus holds for equine welfare is vast, and I feel it is important to bring the lessons I learned into my work whenever possible. Continually improving our ability to communicate with the horses in our care is a conversation that needs to happen among equine welfare advocates across the country.



Katy getting some first touches on Starlight in the Monty Roberts Gentling Facility chute. This is the first day of work after Starlight's arrival at Flag Is Up Farms.

*Katy Whipple is the Supporter Engagement Coordinator for Days End Farm Horse Rescue. Formerly, she was the Assessments Specialist for the Maryland Equine Transition Service, a program of the Maryland Horse Council Foundation. She is committed to the advancement of equine welfare in Maryland and across the country.*



# NOV 2021 **OUT & ABOUT**

Canter for the Cause • October 10 • Pimlico Race Course



Stephanie Pickett on Outlaw, Missy Alexander aboard Sunny, Stefanie Owens riding Rango, Mette Fields on Remy and Jonell Caliskan on Boo



Kerri Long and Memphis



Stephanie Redwine on Baron with Gail Augustine on Abba



Riders from Sweet Rock Stables



Emily Sharpe riding Dixie

Kim Harmon Photography



Ashley Nicole on Splash



Cara Harmon aboard Mariah

Kim Harmon Photography

Check out more photos from this year's Canter for the Cause at Pimlico on *The Equiery's* Facebook page!



Debbie Phelps Worrell aboard Pepsi



Mary Hassell on Maya



Kasey Carmichael and Chopper

Kim Harmon Photography



# CLASSIFIEDS

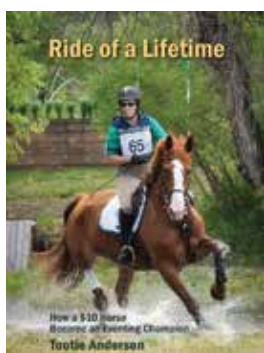
## ANNOUNCEMENTS

### Cats for Adoption

To kind homes only. Incl vaccines, neuter/spay, tests. 410-369-6488 for avail cats

### Nov. 14 - Barn Sale

(Laytonsville, Montgomery Co) 1 - 4 PM Blankets, various sizes, cleaned and refurbished. Odds & Ends (e.g. Bits, bridles, light tack) other horse necessities (no saddles). 240-793-5242. Rain Date, Nov. 14



**Ride of a Lifetime:** An inspiring true story! Ride alongside Tootie to experience her successes and raw emotions as she and her \$10 mare overcame countless obstacles on the way to the top. Joy, sadness, redemption, giving, and loving are on full display! Buy a copy on [optimusfarm.com](http://optimusfarm.com)

## BOARDING

### Great Amenities; Great Atmosphere!

Enjoy all the amenities our large facility has to offer & still get that small family farm feel! Excl mgmt, staff lives on site, lrg indr w/watering sys, 2 lrg outdrs (1 lighted), lrg t/o fields, hack on surrounding trails, matted stalls w/windows, h/c wash stalls, heated tack rms & BA! All disciplines, your vet, blacksmith, trainer welcome. In-house trainers also avail. Conv to I-270 & I-70. 301-253-9417, [www.southwindfarminc.com](http://www.southwindfarminc.com)

### Board for 1 Mare

Quiet setting on no-drama family farm. Trail riders, retired horses or layups. Meticulous & attentive care. Lrg airy 12x12 stalls w/fans & insulated water bucket holders. Himalayan salt blocks in each stall. 3 paddocks, 2 private areas for just 1 horse. 2 fields of 4ac+ (to be enlarged soon). Fields & paddocks not overgrazed Outdr arena, adj. to Patuxent River State Park trails. Your choice of feed. Potential for reduced board in exchange for light help. A good home for your older horse. 240-793-5242

## BOARDING

### Banner Country Stables

A small family run business w/ owners on the premises 24/7, We are able to offer individual care, Perfect for an equine looking for a quieter pace of life, Property has board fencing, 100x200 outdoor riding arena, run-in shelters etc, trails are a short walk away. Full care is \$525 this includes grain twice daily, hay, blanketing, fly masks etc, we can also offer assisted self care at \$350. For further info, 240-274-7597

### WAREDACA Eventing Education Center

190+ ac. farm w/direct access to miles of state ark trails. 3 outdr arenas, 1 indr, 1Prof. XC courses, schling shows (drsg, eventing, jumpers), Expert Talks w/ Intl Evtng Chmps, USEA Horse Trials Stall & field brd Trngng & lsns avail 301-570-4191 info @ w a r e d a c a . c o [www.waredaca.com](http://www.waredaca.com)

### Marlboro Horse Farm

Upper Marlboro. Full care board on 100 ac farm offering prvt & semi-prvt TO w/run-ins. Miles of trails, lighted sand arena, lighted stone dust dressage arena, lighted round pen, semi prvt tack rms, 12x12 stalls. Trailer prkg avail. 10 min from PGE. Full & Self Care. 2nd location in Lothian. 410-991-0962, [www.marlborohorsefarm.com](http://www.marlborohorsefarm.com)

### ROSE HILL FARM

Port Tobacco, MD. Indoor/Outdoor riding arenas. Full care horse board - 24/7 turnout w/ access to 12 x 12 stalls. 200 acre farm. Tack room/lounge. Wash stall w/hot water. Trails & room to hack. Farm manager lives on site. Peaceful setting for better connection with horse & rider. MHIB Licensed \$400/mo. Call 301-642-4479 for more information.

### Retirees Welcome

at priv farm in Mt. Airy. Gelding. Lrg pastures & stalls, the best of care by experienced horse couple. Full board \$415. 410-795-4112



**18 stalls for lease:** Indoor, outdoor w/ lights, Paddocks with run-ins. Board fencing, access to XC course, galloping track & Jump chute. Some field board options. Ample parking, optional apartment (s) avail. \$6,600 per month. 301-514-0111 (call or text) to make appointment to view.

## CLARKSBURG PLUMBING LET'S FLOW

We are proud to offer farmers plumbing services that work just as hard as they do! We're dedicated to designing custom plumbing around your specific needs.

Here are just a few of the many services we offer:

EXCAVATION	WATER LINES
EQUINE WASH RACK	YARD HYDRANTS
IRRIGATION SYSTEM	AUTOMATIC WATERS
AUTOMATIC WASHERS	SPRINKLER SYSTEMS
BARN HOUSE FLOOR DRAINS	DRAINAGE AND WASTE SYSTEMS

LET US SHOW YOU HOW YOUR FARM WILL BENEFIT FROM OUR PLUMBING SERVICES



CALL AND SCHEDULE YOUR  
FREE ESTIMATE TODAY!

301.865.2223  
[WWW.CLARKSBURGPLUMBING.COM](http://WWW.CLARKSBURGPLUMBING.COM)

## SAWDUST, SHAVINGS, AND MANURE REMOVAL SERVICE

*"In One Trip to  
Save You Time  
and Money"*

### Premium Pine Shavings in bulk or bales Sawdust available year 'round

- 15 & 30 cu yd containers available for bulk delivery and manure removal service
- Serving satisfied customers in PA, MD, DE, and NJ for over 20 years
- "Innovators in Chesapeake Bay Composting initiatives for a greener earth."
- "Providing quality bedding products and service that satisfy horsemen from the pleasure rider to the Thoroughbred trainer..."

### Pine View Trucking

350 Nottingham Rd.  
Nottingham, PA 19362  
717-529-2855

visit us on the web at  
[www.pineviewtrucking.com](http://www.pineviewtrucking.com)



# BLUE RIDGE TRAILERS LLC

Alice & Pete Drayer



SALES • SERVICE

www.blueridgetrailers.com  
JEFFERSON, MARYLAND

Phone: 301-473-1234  
Fax: 301-473-4424

ESTABLISHED SINCE 2000



AUTHORIZED DEALER FOR  
GORE TRAILER MFG

Horse & Stock GN/BP Models Available

Trailer Repairs & Hitch Installation on All Makes & Models

4111 Lander Road  
Jefferson, MD 21755  
(5 miles west of Frederick, MD)

www.blueridgetrailers.com  
dodgendaja@aol.com • 301-473-1234

0320

## BOARDING

### Paradise for You & Your Horse

State of the art facility in Mt. Airy offering elite care in peaceful, stress-free environment. Wash stalls, heated observ. lounge, tack rms w/lockers, indr arena, 125 acres of rolling pasture, board fencing, auto waterers, custom-designed run-ins; "Weight Watchers" paddocks; 10 miles of trails; 301-865-4800 or paradisestablesllc@yahoo.com; www.paradisestables.com

### Potomac Horse Center

Full care brd, daily T/O, 10x12 box stalls, dedicated boarder areas, H/C wash stall, trail access to Muddy Branch Park. Strong Dssg, C/T, & H/J progs in house, all disc welcome. Conv to Gaithersburg, Rockville, Potomac, etc. A Public Facility leased from M-NCPPC 301-208-0200, www.potomachorse.com



**Aspiring Heights Farm - Westminster:** Junior & Adult-oriented, trailer-in lessons avail. with JoAnn Robertson, USEF/MHSA R judge. Hunters, equitation 410-848-1431 (no texts), aspiringheightsfarm@gmail.com; aspiringheightsfarm.com

### Board in Burtonsville

Stall & field board available in Burtonsville, MD. 301-412-4503

### Self Care Board

Brick and Stone Barn, 12x12 stalls, Tack Room, Feed Room, Hay Storage, 2 pastures for up to 6 horses, Outdoor Riding Arena, Beautiful Trails. \$250/mo Contact 301-768-8454

### LISBON/WOODBINE Self Care, Up to 3 Horses

Lisbon/Poplar springs, off rt.144. Self-care - Private - Large barn w/several stalls, lots of storage area. Water/Electric. Perfect for up to 3 horses or several sheep/goats. 4ac of fenced pasture plus a few miles of wooded trails, easy access. \$250/mo total, rents all. Please leave msg. 240-595-1115 e-mail: antiquehardware@verizon.net

### 2 Field Board Spaces

Minutes from Hashawa, Codorus half hour to Morgun Run. 12 x 24 run-in, 10 acres. Auto Waterers. Stalls avail. Owner lives on premises. Andrea K. 443-974-2764

## BOARDING

### Bonafide Stables

Glenwood. Friendly, relaxed atmosphere, all disc. welcome. Over 30 yrs. exp. Family owned/operated. Bring your trainer or work w/ours. Indoor, 12 x 12 matted stalls, h/c wash stall. Full care stall & full care field avail. Tack Lockers avail for every stall. 443-277-4336

### W Friendship

Full care stall & field board options, min. from I-70 & 32. 12'x13' matted stalls, 50+ acs of t/o, huge riding fields & sand outdoor with lights. \$550/mo stall, \$375 field. 301-580-8051 taraequestrianllc@gmail.com taraequestrianeventing.com

### Reichs Ford Farm in So Fred Co.

Field Board - \$275/mo. Stall Board - 525/mo. 240 acres, mountain views, groomed trails, fields, woods & water crossings. Two barns, custom run-in shelters, quality home-grown hay, free-fed in winter. Automatic, heated waterers. Sand/fiber arena & custom round pen, grass arena w/jumps & cavaletti. Mares' & retirees' fields. Licensed, Ijamsville/Urbana area. Joy Fernon, Manager 240-674-4825 reichsfordfarm.com

Three stalls to rent at a quiet family farm in Highland, MD. Owner maintains property, renter responsible for all animal care. Extra storage in adjacent barn if needed, free of charge. joanna.anastasio@gmail.com pricing

### Self-Care Field Board, Western Howard County

Beautiful Private Farm in Cooksville. 170 acres to ride, multiple large lush, fenced pastures with run-in sheds and auto waterers. Heated wash stall, tack room, and barn available for use and storage. Owners live on site. \$200/month self-care field board. Retirees welcome! (303)918-0870

### Celebration Farm

Libertytown: Conv. to Mt. Airy, Frederick, Westminster. 38 acres, small grp & priv. t/o. Indoor arena, lighted outdoor arena, oversized wash stall, heated tackrms. Your trainer welcome. www.celebration-farm.com jgeyer@ix.netcom.com

### Barn & Pasture For Rent

For self care near La Plata. 2 stall barn, heated tack room w/ H/C water, feed room, hay storage, 5 acre pastures, large ring, miles of trails. \$450/mo 301-934-3824

### Free Online Classifieds

Did you know that Maryland Horse Council Members can place online-only classifieds for free? Join Today! 844-MDHORSE or membership@mdhorsecouncil.org



Established Since 1985



## FENCING: Horse & Livestock

Wood Board • Horse "No Climb" • Wire Mesh  
American Wire • Hi-Tensile • Vinyl Tape

## BUILDINGS: Custom Designed

Renovations & Repairs • Post and Frame  
Horse & Livestock Barns • Arenas  
Equipment Storage & Shops • Garages

*Materials Available*

Jefferson, MD (5 miles from Frederick, MD)  
www.phdrayerco.com • 301-473-4466

**BLUE RIDGE TRAILERS, LLC**  
Sales and Service (on any Make or Model)  
Dealer for GORE TRAILER mfg.

www.blueridgetrailers.com • 301-473-1234

0320



## BOARDING

### Potomac Riverside Poolesville, MD

Private country estate atmos w/ peace & tranquility for your horse. Personal qual care. Prvt t/o avail. 400 ac farm adjoining Park trails. Lg comp sized indoor & 2 outdoor arenas w/jumps 13x13 stalls w/rubber mats. Auto fly spray sys & fans in ea stall. Indoor & outdoor wash stalls, H/C water, tack lockers. Lounge & changing rm Paddocks w/ run-ins, auto water, heated troughs, shows & activities. Instr. avail by senior exp instructors, your trainer welcome. Field board \$375. Stall board \$575. Trailering avail. Owr/mgr lives on premises, 24hr care. www.potomacriversidestables.com, 301-972-8187

### Mason Dixon Stables

Accepting Boarders: Westminster, conv. to Taneytown, Littlestown & Hanover. 12x12 stalls, indiv. paddocks, large pastures, frost free auto water. Hacking area, outdoor arena, round pen, 2 h/c wash stalls. \$350 stall board, 717-725-9834

### Woodbine/Glenelg

Stall Board for All Disc. Rising Star Farm features state-of-the-art 204x84 indr, 250x150 outdr. 12x12 matted stalls, heated wash racks, rnd pen, t/o paddocks, heated tack rms, a/c lounge & viewing rms. Exp. staff on site. Training & lessons. Show horses for sale. Loc. 3 miles north of I-70 off Rt. 97, 1007 Hoods Mill Rd, Woodbine, MD. Barn 443-920-3701, cell 301-452-4951, www.chapmanreininghorses.com

### Doc's Haven Farm, LLC in Poolesville

has full care stall board available for full or partial training. Quiet, friendly dressage focused barn ideally suited for horses & riders needing a safe and supportive environment. Lessons, training, coaching available onsite. State of the art barn with attached indoor situated on 87 acres, too many amenities to list. All breeds & disciplines are welcome. (301) 452-6420

### Frederick Co - MD

Large stalls w/mats at private farm Pasture t/o, rnd pen, 70' x 200' outdr lighted arena & areas for hacking Located next to H/J riding school \$450/mo, quality hay, low dust bedding & personalized care by farm owners Retirees & semi-retirees welcome 301-834-7486 (call after 6 pm) dodgendaja@aol.com

### En-Tice-Ment Stables

Harwood-Stall & Field Boarding, Lessons, Camp. Hunter Jumper lessons & Sales. Indoor, outdoor, trails, show teams. 410-798-4980

## HORSES/PONIES



**For Sale:** 2 Dutch Harness Horses, 3 YO bay geldings. Lightly started U/S. Correct conformation & movement. Super sweet dispositions. Suitable for really anything. Will excel in Dressage, Eventing, Fox Hunting or fun all round horse. Its hard to find horses this nice with sound conformation & good movement. 15.2 hands and 16.2 hands and growing. Asking \$15,000 Text/ call 410-596-4577 llbhorse@gmail.com

## PRODUCTS/SERVICES

### Agape Pet Services

full-service equine cremation w/ transport, scheduled & emergency. Large selection of urns & keepsakes to honor your horse's memory. Locations in MD, VA, & NC. Also offering services for small animals. 301-432-0431 www.agapepetservices.com

### R & D Cross

Since 1927 So. MD's Farm Home Garden & Pet Supply Store-Brandywine, Family owned, Southern States dlr. Fireplace Designs & Custom Buildings & more www.randdcross.com 301-579-2449

### Paradise Energy Solutions

We understand solar is a big investment. That's why we're committed to being your long-term solar partner. We're with you the entire process - design, installation, and maintenance. Visit our website to find a quote, or download "A Farmer's Guide to Going Solar". www.paradiseparsolarenergy.com

### Clarksburg Plumbing

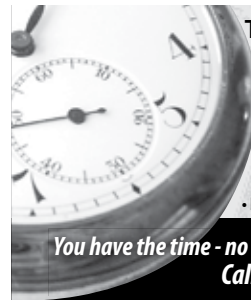
Let's Flow - We can help with your plumbing needs - Wash Racks, Irrigation Systems, Auto Waterers, Drainage and Waste Systems, Water Lines, Sprinklers, & More. 301-865-2223 clarksburgplumbing.com

### Pine View Trucking

Premium pine shavings-bulk or bale, sawdust avail year 'round 15 & 30 cu yd. containers for bulk delivery & manure removal. Serving PA, MD, DE, & NJ for 23+ yrs. 717-529-2855 www.pineviewtrucking.com,

### Lessons & Leases

Lessons/prof. trainer, all discp & horsemanship. Burtonsville, MD. Ask about leasing! 301-412-4503



Times are **TIGHT**  
But you **CAN** save money.  
It is **TIME** to reassess your insurance policies.

- Are you paying for too much insurance? Too little?
- Do you need to raise your deductibles to lower your annual costs?
- Is there some coverage you can drop?
- Is there other coverage that you can't afford NOT to have?

You have the time - no excuses.  
Call Today.

**Kitsi Christmas  
Christmas Insurance  
A Rated Companies**  
Fax 1-800-470-2423 • 301-509-4552  
www.Christmasinsuranceagency.com  
kitsi@christmasinsuranceagency.com

Offering a Full Line of Insurance Products  
Liability (including Care, Custody & Control, Boarding, Breeding, Umbrella, Racing, Training, Instruction)  
Workers Compensation (Coming Soon)  
Property (farms, residents, barns, machinery, tools, tack, automobile)  
Equine (Full Mortality • Major Medical • Loss of Use)  
Give your business a Christmas gift - call Kitsi today.



## LIGHTNING ROD SYSTEMS

Installed and Repaired

We protect Houses, Barns,  
Stables, Pole Barns and Trees.

U.L. Listed Materials  
N.F.P.A. Member

Family Owned Since 1950  
Serving PA, DE, MD, NJ, & NY

William Burden 800-557-9037  
www.wblightningrods.com



Come board in Paradise



## Maryland's Premier Pleasure Barn

Where being with your horse ...  
is always a pleasure.

- Light-filled 80 x 120 Indoor Arena
- 100 x 200 Outdoor Arena
- Jumps & Training Obstacles Available
- 300+ acres of Trails
- Climate Controlled Observation Room
- Climate Controlled Tack Rooms w/Private Lockers
- Hot Water Wash Stalls
- Stall or Field Board
- Lay-up Paddocks Available
- Specialty Individualized Horse Care
- Monthly Fun Days and Lessons with Joe London
- Outside Trainers Welcome
- Drama Strictly Prohibited
- Convenient Location



Discover Peace in Paradise  
301-865-4800  
6250 Detrick Rd., Mount Airy, MD 21771  
paradisestables.com  
paradisestablesllc@yahoo.com

# EQUI-ROLL TRANSPORT LLC

State Certified

Established 2003



**Shavings and Removal Service For The Small Equine Facility**

**Removals at your convenience!**

**Nice hunter green 7 cu. yd. roll off container, the ideal manure management plan for residential settings!**

Serving PA, DE, MD and Northern VA



**Contact Mick Power**

717.405.2957 • www.equirolltransport.com

0420

## Now Accepting Boarders



- 65 Acres • 12 X 12 Stalls
- Hacking Areas • Outdoor Arena • Round Pen
- Individual Paddocks w/Run-in Sheds & Auto Water
- Large, Lush Pastures w/Run-in Sheds & Auto Water
- Lounge • Bathroom & Shower
- 2 Hot & Cold Wash Stalls

**\$350 STALL BOARD**



## Mason Dixon Stables

618 Humbert Schoolhouse Road, Westminster, MD  
Convenient to Littlestown, Hanover & Taneytown

717-725-9834

0821

## PRODUCTS/SERVICES

### Double S Construction

Where Quality Craftmanship meets you! Custom Barn building and designing Horse Barns; Party barns; Garages; Riding Arenas. 717-823-1693 <https://double-s-construction.com> Steve@Doublesconstruction.net

### Blanket & Tack Liquidation

by Horse Blanket Kare. All sizes & weights blankets, cleaned & repaired. Tack, all sizes riding apparel & breeches. Call Kathy 301-330-5551; Text Kerrie 301-461-8295 [horseblanketkare@gmail.com](mailto:horseblanketkare@gmail.com).

### Rippeon Eqp Says Winter is Near

We carry a full line of gear to help you get through weather severe-Snow plows & blowers to keep things clear & generators to make electric troubles disappear. Schedule tractor service now before snows come near & let our technicians give you the all clear. Locations in Gaithersburg, Westminster & Frederick. 301-670-9300, [www.rippeonequipment.com](http://www.rippeonequipment.com)

### Equi-Roll Transport LLC

Shavings & removal service for small equine facilities at your convenience. Serving PA, DE, MD & NoVA since 2003. 717-405-2957 [www.equirolltransport.com](http://www.equirolltransport.com)

### Farmers Cooperative Association Feed

ADVANTAGES: Old fashioned service w/cutting edge technology; Simple brown bags save \$\$; Minimal preservatives added; Over 30 dealer locations in MD, VA, WV, PA & NJ; Equine Nutritionist avail w/practical advice [www.FarmersCoop.com](http://www.FarmersCoop.com), 301-663-3113



**Precise Buildings LLC** Full service, custom builder. Horse barns, bank barns, pole barns, riding arenas, residential restorations & more. Amish craftsmanship combined with innovative engineering. <https://precisebuildings.com> 717-768-3200 [info@precisebuildings.com](mailto:info@precisebuildings.com)

### First Class Mechanical

Livestock Waterers (certified installer of Nelson Waterers), Plumbing, Heating, Air Conditioning, Well Pumps & Water Treatment. Master Plumber. 410-876-2434 [www.firstclassmechanical.com](http://www.firstclassmechanical.com)

## TACK/APPAREL

### GOT BUCAS?

All Bucas Winter Turn Outs on sale while supply lasts. [www.ridingright.com](http://www.ridingright.com) 800-545-7444

## TRAILERS/VEHICLES



**1998 Kingston, 2H, GN.** Well maintained, washed & waxed every year. Floor boards sold. 1 air vent in DR & 1 in Stall area. DR has 2 saddle racks, 5 tack hooks & full length mirror. Dividers to haul pony/sm horse in front of stalls. Asking \$7,000. Call or text 301-335-6475.

### Bartley Trailers

In Woodbine, MD! Carrying Homesteader landscape, equip, utility trailers & car carriers. Service, repair & U-Haul Rentals. 301-774-3332, [www.bartleytrailers.com](http://www.bartleytrailers.com)

### Traveled Lane Trailers

Sales & Service-Boeckman, Calico, Kingston, Jamco & more Horse, stock, utility, cargo, equipment & dump trailers Centreville, MD 410-556-6850 [traveledlanetrailers.com](http://traveledlanetrailers.com)

### Cox Trailer Sales, Inc

Your source for trailers, supplies, repairs & maintenance for 50 yrs! Horse trailers, utility, car haulers, flatbed, etc Also carrying farm equip, rnd pens, stall mats etc 301-599-6285, [www.coxtrailersalesinc.com](http://www.coxtrailersalesinc.com)

### Kingdom Trailers

Forest Hill MD - We Sell Shadow Trailers because We Use Shadow Trailers. BP/GN/LQ/Livestock. Great selection of trailers in stock & ready to go! Financing & delivery avail. Select used trailers also avail. 443-640-633 [WWW.KINGDOMHORSETRAILERS.COM](http://WWW.KINGDOMHORSETRAILERS.COM)

## WANTED

Part time riding instructor wanted at a comprehensive riding academy in Harwood, Md specializing in hunters/jumpers/equitation with a foundation in biomechanics and horsemanship. Desired applicant is upbeat and enjoys explaining concepts- experience teaching beginners through intermediate riders is a bonus though we are willing to train the right person. Extensive riding and horse management experience required. Competitive pay and flexible scheduling. Potential to expand into a full time position with stable management duties. Please email resume to [clovverunriding@gmail.com](mailto:clovverunriding@gmail.com)



**WANTED****Instructor/Assistant Manager**

Full or Part Time. 3 - 4 days/week. Bowie, Prince George's County. Call for details. 301-526-4205

Dependable stable help needed for riding academy in Harwood, Md. 12-15 well behaved horses. Feeding, turn out, blanket changes, basic first aid, grooming, keeping the stables organized. Morning and/or evenings available. Full or part time available. Full time will include stall cleaning and stable maintenance. Potential for additional hours/income by caring for additional 4 stall barn 5 minutes away. Please email resume to cloverrunriding@gmail.com or text 443-875-5438.

Join our team at Talisman Therapeutic Riding in Grasonville, MD as Executive Director. Working with our supportive board, staff, and volunteers, the Executive Director is responsible for leading and managing the staff and volunteers in day-to-day operations as well as strategic development and planning. Lead the team to advance and grow the Talisman mission to serve! View full job description and apply on [www.indeed.com](http://www.indeed.com) or email board members at [board@talismantherapeuticriding.org](mailto:board@talismantherapeuticriding.org)

**Customer Service/Sales Support  
County Saddlery, Inc.**

In Lisbon, MD ([www.saddles.com](http://www.saddles.com)) E-commerce experience, shipping and fulfillment experience preferred. The ideal candidate must be computer savvy, have experience using Microsoft Office Suite, have strong customer service skills as well as strong written, verbal, and interpersonal communication skills. Knowledge of the equine industry is a plus, but not required. Full-time employment. Must provide proof of Covid vaccination. Salary negotiable. Reply to: [employment.countysaddlery@gmail.com](mailto:employment.countysaddlery@gmail.com)

**WANTED**

Hunt Seat Instructor wanted for large riding school. Must love beginners and appreciate school horses! Some barn management duties; no mucking. Send resume to: [renee.t.gingras@gmail.com](mailto:renee.t.gingras@gmail.com) for large riding school. Must love beginners and appreciate school horses! Some barn management duties; no mucking. Send resume to: [renee.t.gingras@gmail.com](mailto:renee.t.gingras@gmail.com)

**Don't Miss an Issue!**

Become an MHC member and receive a subscription to *The Equiry!* Annual memberships start at \$40.

(844) MDHORSE  
[membership@mdhorsecouncil.org](mailto:membership@mdhorsecouncil.org)  
[join.mdhorsecouncil.org](http://join.mdhorsecouncil.org)

**Barn Help:**

Experienced part time barn help needed for small family barn near Bay Bridge in Annapolis. Good horse handling a must! Flexible AM and/or PM hours. Perfect job for high school or college students! Email: [anita@anitahudson@gmail.com](mailto:anita@anitahudson@gmail.com)

Thinking of a career in real estate? Want to work with a dynamic, experienced team of equestrian agents with one of the best real estate brokers in the Mid-Atlantic Region? Call Laura Jones, Team Leader of The Laura Jones Team with Long & Foster Real Estate, Inc. (c) 410-707-7246 (o) 410-480-3338

R & D Cross of Brandywine is hiring for Full and Part Time employees. Hiring drivers, cashiers, & warehouse staff. Fill out an application at R & D Cross. [www.randdcross.com](http://www.randdcross.com)

**GROOM NEEDED**

Steeplechase/fox hunting stable in the Green Spring Valley MD area looking for experienced horse person. Duties include feeding, grooming, stall maintenance & assistance with general horse care. Text 717-683-8974 or email [cblasser@naylorfam.com](mailto:cblasser@naylorfam.com)



# Experience the First Class Difference

- Plumbing
- Heating
- Air Conditioning
- Well Pumps & Water Treatment
- Livestock Waterers (*Certified installer of Nelson® automatic waterers fresh, clean water all the time.*)

## 410-876-2434

Offering SAME DAY well pump service

Master Plumber #026452 • HVAC #5537

### FirstClassMechanical.com

0320

**Online Classifieds  
Updated Daily!**

**Check it Out**

◆ **[classifieds.equiry.com](http://classifieds.equiry.com)** ◆

To place your ad for the next issue (print & online) or online only, contact Tracy McKenna

410-489-7826 ◆ [classifieds@equiry.com](mailto:classifieds@equiry.com)

**BARTLEY TRAILERS** *Service with this ad 10% Off*

**Servicing all types of Horse Trailers  
Sales • Repairs • Safety Inspections • Parts**

**15095 Frederick Road  
Woodbine, MD 21797  
301-774-3332**



**HOMESTEADER TRAILERS**

Authorized  
Homesteader  
Stallion Dealer

**[www.bartleytrailers.com](http://www.bartleytrailers.com)**

**16613 New Hampshire Avenue  
Silver Spring, MD 20905**

0320

**TRIPLE  
CROWN**

# FALL SAVINGS SALE!

November 8-13, 2021

**\$2 OFF**

TRIPLE CROWN SENIOR,  
SENIOR GOLD &  
COMPLETE



only at:

**R & D CROSS**  
13801 Martin Rd.  
Brandywine, MD 20613  
301-579-2449

[triplecrownfeed.com](http://triplecrownfeed.com) | 800-451-9916



# OUT & ABOUT

OCT  
2021

Maryland



The NH Equestrian Team at the October Lytle's Farm Horse Show. From left: Jane Zara, Anne Glass, Keira Paige, trainer Kaitlyn Nicely-Harvey, and Marya Norton.



Samantha Resch's Jack Russell Lila giving LuAnne Novello's foal CrackaRooZ a kiss.



Tammie J. Monaco

Elkridge-Harford Hunt Club junior member Camilla Hubbard at the club's opening cub hunt.



Erik Arnesen and Ross Peddicord (MHIB Executive Director), pictured with Jo Ann Bashore of the Equine Rescue Ambulance Fair Hill Division, stopped by ERAFH's display at the Tuckahoe Equestrian Center's "Celebration of the Horse" to see the new Becker Sling that was purchased with an MHIB grant.

**More Out & About photos on Facebook!**



Addison Huffman's Clantus finished seventh in the International Hunter Derby at the Maryland Horse & Pony Show.



Bonnie Norris and Koko hacking at Union Mills.



Jocelyn Ellis of Safe Haven Farm earned a Reserve Championship at the October St. Timothy's School show.



Jennifer Stoloff Cook with her foal Epiphany and mare Dofina at the September 15 GOV inspection.



Beth Collier of Lusby taking a lesson aboard Mary Russell's Solsticio del Verano at Lucky Cricket Farm in Huntingtown.





Emma Willmore with her favorite lesson pony Bella at Free Rein Equine, LLC in Hollywood, MD.



Shawn Paley

The ladies of The Big Easy show stables had a great time at the Country Hill Farm series opener earning three Reserve Champions and two Champion ribbons. From left: Harper Fields, Natalie Paley, Delaney Hartgen and Neha Kamineny.

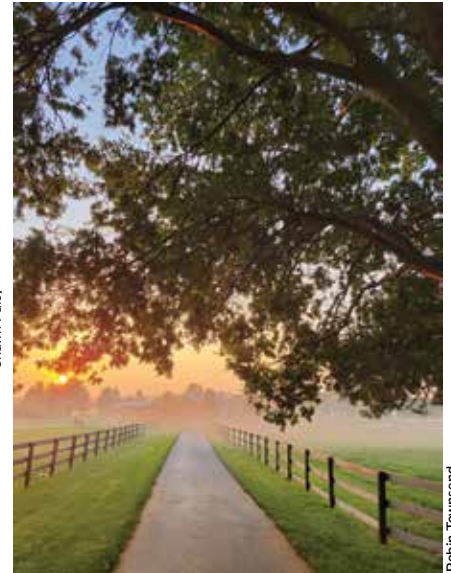


Gabrielle Coffone's homebred Oldenburg filly (Saint Sandros Caspian x Welts Wisteria) was named Premium Foal, Site Champion Filly and Overall High Scoring Foal at the inspection held at Flying Change Farm in PA.



Tammie J. Monaco

Peter "PJ" Orthwein (blue) and Louisa Huber (white) at the at the Maryland Polo Club in Jarrettsville this past September.



Robin Townsend

An early September morning at Robin Townsend's farm in Keymar.



Chrissy Hall on Fancy and Juls March on Apollo take a ride around their neighborhood in Westminster.

## The Maryland Thoroughbred Eventing Series

Time to Send in Your Results!  
Email to [mdteventing@gmail.com](mailto:mdteventing@gmail.com)



- Complete more than 4 events, only best scores kept.
- Prizes for top 3 horse/rider combinations will be presented in November.

### MDTE SERIES SPONSORS:



### 2021 RECOGNIZED DATES

April 9 - 11 Fair Hill International April HT  
May 1 - 2 Waredaca HT  
May 15 - 16 Fair Hill International April HT  
May 22 - 23 MCTA HT at Shawan Downs  
June 11 - 13 Seneca Valley PC Spring HT  
July 2 - 4 The Maryland International & HT  
July 10 - 11 The Maryland HT II  
July 18 Full Moon Farm HT  
Aug. 1 Olney Farm HT  
Aug. 7 - 8 Fair Hill International August HT  
Aug. 14 - 15 Waredaca HT  
Aug. 28 - 29 Seneca Valley PC Fall HT  
Sept. 18 - 19 Marlborough HT - Cancelled  
Oct. 1 - 3 The Maryland HT  
Oct. 22 - 24 Waredaca Classic 3-Day & HT  
Nov. 7 Full Moon Farm HT  
For unrecognized dates, visit [MDTEventing.com](http://MDTEventing.com)

[mdteventing@gmail.com](mailto:mdteventing@gmail.com) • [www.MDTEventing.com](http://www.MDTEventing.com)



## Potomac Valley Dressage Association

Promoting education in the art & sport of dressage since 1964

Now is the time to renew your PVDA membership!  
2022 Membership starts December 1st.

Renew online or print a form to mail in. Don't forget your volunteer certificates for \$10 off with each one!

Volunteer hours for 2021 awards can still be earned at our Fall licensed show and the schooling show championship.

### Upcoming Shows:

11/7 • Chapter Challenge & Schooling Show Championship  
11/13-14 • PVDA Fall Show & ATC • Upper Marlboro, MD

Find a chapter near you! View our full calendar online.  
See what PVDA can offer you at [www.pvda.org](http://www.pvda.org)





Ashley Marie

**Charlize Stair and Watch Little Rock running barrels at the Maryland State Fair.**



**Romain Ampe riding Long Trip Alone at the EPRH Reining Show in October.**



Bill Green

**Bob Enfield winning the Pro Class in Jousting at The Great Frederick Fair.**



Angie Leithy

**Laila Bolsteins of Mt. Airy finished seventh in the Open Modified division at the Maryland Horse Trials 3 at Loch Moy Farm riding Sabino Canyon.**



**Anne Katrin Urzyncok and Hideway share some quiet time during the Maryland Horse & Pony Show.**



Pam Polk

**Cate Carrick Nellans and Wynnfield Noelle at the All Standardbred Horse Show held at The Great Frederick Fair.**

**Javier Donatelli**  
 Eqqqq Vqqqqqqqqq LLC

*A Mobile Equine  
 Veterinary Practice*




Direct Digital X-Rays,  
 Ultrasound, Extracorporeal  
 Shock Wave Therapy,  
 Sport Medicine, Dentistry

Cell - 240-676-1990  
 Fax - 240-489-3083

javdonatelli@hotmail.com  
 P.O. Box 365 • Poolesville, MD 20837

1121

**Manure Removal & Roll-Off Services**



*Offering 10, 15 & 30 Yard Cans  
 For Service Call  
 Cory • 301-300-8335 or Bruce • 301-370-7111*

0320



**Reduce Electric Costs.  
Pay Fewer Taxes.  
Save Money.**



"They're very credible; they're very professional and experienced. You're going to get a great system..."  
- Joe Herzog, Woodvale Farms



877.851.9269  
ParadiseEnergy.com

0121

## Maryland Horse Council's Trail Clean Up Day!

When: November 21  
Where: Your favorite trail

Help us be good stewards of our trails!



photo courtesy of DNR

For more details, contact Carolann Sharpe at  
blackandwhitecookieequine@gmail.com

1121

20 Years In Business



**PROFENCE LLC**

We Build To Please

- High Tensile
- Board Fence
- Woven Wire, Non Climb
- Poly cote Horse safe wire
- Horse Rail
- Deer Fence



**Call: 1-877-736-8244**  
Email: [Brian@profence.org](mailto:Brian@profence.org)  
Visit : [www.profence.org](http://www.profence.org)  
Serving: PA, MD, WV, VA, NJ, NY  
Located in Shippensburg, PA

0420



### Celebrating High-Quality Horse Farm Stewardship in Maryland Spotlight on Persimmon Tree Farm, Westminster, Carroll County

When it comes to implementing best practices to protect our natural environment, horse farms can be significant and important contributors to meeting the goals of carbon reduction, clean water protection, and wildlife habitat preservation. Persimmon Tree Farm, owned by Maryland Horse Council member Carolyn Krome, is an example of a horse farm managed for the maximum benefit of the twenty hunter/jumper show horses on the property AND for implementing high-level environmental protection practices. Krome purchased the farm in 1985 and has installed a variety of best management practices over the course of many years. Persimmon Tree boarders appreciate the high-quality care of the horses as well as the natural beauty of the farm.

This 132-acre farm has hilly topography, woodlands, and multiple natural water sources. Because quality farm management starts with the layout and maintenance of the pastures, the horses benefit from quality grazing in fields laid out to minimize erosion around gates. All water courses are outside of the pastures. The pastures are mowed, limed, dragged and over-seeded on a regular basis. Based on the turnout management system, the number of horses per pasture is in the range of two acres per horse. The pastures provide forage and natural exercise for these top competition horses. The pastures are also a net plus for the environment. The grasses and soil fix atmospheric carbon through photosynthesis and the breakdown of organic matter. The roots in the ground and consistent grass cover slow down water runoff to minimize erosion, remove sediment, and absorb nutrients before the water enters the Chesapeake Bay Watershed.

Water management on the farm incorporates best practices for streams, wetlands and hard surface runoff. The buildings, driveway, and parking areas are bordered by grassy verges to slow down rainwater runoff. Manure is collected on a concrete pad and hauled off the property. The steep slopes of the farm that are not suitable for pastures are planted in warm season grasses to hold the soil. These are kept healthy through dethatch-

ing and controlled burns. In an area that regularly flooded, a wetland was established and the stream was restored with vegetation along the banks to reduce sediment and nutrient runoff. New trees were planted to increase the soil's water retention capacity and to fix atmospheric carbon. The water leaving the farm is now clean.

The several acres of woodlands on the property are managed with expert advice for tree health and propagation of native species. Trees within pastures provide shade and wind breaks, and they are fenced off to protect them and to provide sheltered places for wildlife. These mature trees are also carbon fixing champions.

Wildlife habitat is of special interest to Krome. Each zone of the farm provides support for birds, forest animals, bees, and butterflies. Native plants are cultivated around the farm and maintained in a healthy condition through dethatching and regular seeding. Wildlife of all types is seen on the farm every day.

Finally, Krome is a leader in using and promoting the many farm and environmental support programs at

the county and state levels, including technical and financial assistance. In her experience, these land management practices can be put in place while keeping costs reasonable and tapping into available resources. She also uses the farm, through offering guided tours and hosting meetings of experts, to educate horse farm owners and managers, as well as other interested parties, on how to respect the land and run a successful riding operation at the same time. In recognition of her leadership, Persimmon Tree Farm was the first horse farm in Maryland to qualify for the Farm Stewardship Certification and Assessment Program (FSCAP) of the Maryland Association of Soil Conservation Districts (MASCD). She has been and remains an invaluable resource for the Maryland Horse Council Farm Stewardship Committee.

If you are interested in serving on MHC's Farm Stewardship Committee, please contact me [theryjane@gmail.com](mailto:theryjane@gmail.com).

**Persimmon Tree Farm (Westminster) was recently awarded one of four Maryland Leopold Conservation Awards for farm owners who inspire others with their dedication to land, water, and wildlife habitat management on private, working lands.**



**COMING UP: SPOTLIGHTS ON MORE MARYLAND FARMS AND A RESOURCE BOX AS A GUIDE TO TECHNICAL AND FINANCIAL ASSISTANCE WITH HORSE FARM STEWARDSHIP PROJECTS.**

# Only the BEST for your BEST friend, Patriot® Senior Complete!



AVAILABLE AT A DEALER NEAR YOU

[www.FARMERSCOOP.COM](http://www.FARMERSCOOP.COM)

**1-800-255-0023**

For the Dealer  
Locator, scan  
QR code



**\$2.00 off per bag  
all NOVEMBER!**

Patriot® Senior Complete is a high-quality, complete, forage-fed in easy-to-chew pellet form. It is formulated to meet the special nutrient needs of senior horses and provides a substantial amount of highly digestible fiber, allowing it to be fed without additional forage when fed according to label directions.

Patriot® Senior Complete uses vegetable fat sources and digestible fiber sources resulting in a feed with a lower starch content.

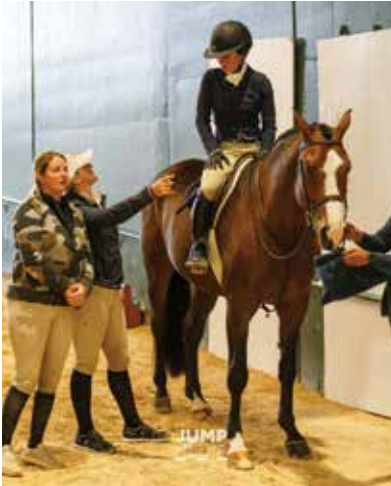




# OUT & ABOUT

NOV  
2021

at the Capital Challenge Horse Show  
October 1-10, Prince George's Equestrian Center • photos by Jump Media



Ashley Foster of Brookeville and Emilio at the in gate before competing in the WCHR Developing Professional Challenge.



Ava Berman of Baltimore riding Kingsbury to win the \$10,000 NAL Children's Hunter Finals.



Samantha Schaefer of Westminster finished second in the Green Conformation Handy Hunter Stake with Caristo. The pair also competed in the WCHR Professional Challenge.



Kathryn Kranking of New Market piloted Mahalo to victory in the \$10,000 NAL Adult Hunter Finals.



**More Capital Challenge Photos & Stories on The Equiry's Facebook page!**

John French, who grew up in Columbia, Maryland, rode Babylon to win the WCHR Professional Challenge. The pair also earned a blue ribbon in the Green Hunter Handy 3'6" Section A division and were awarded the Grand Hunter Championship.



Dorli Burke of Salisbury and Charming earned the Reserve Championship in the Amateur Owner Hunter 36 and Over division.



Payton Flander of Lothian rode Conlara to win the WCHR Children's Challenge.



# SERVICE DIRECTORY

## ALTERNATIVE THERAPIES

### ANIMAL CREMATION/BURIAL



**DIGNIFIED EQUINE CREMATION**

- EQUINE SERVICES AVAILABLE 24/7
- RESPECTFUL AND GENTLE HANDLING
- LARGE SELECTION OF KEEPSAKES

**CONTACT US TODAY!**

(301) 432-0431 agapepetservices.com

## BLANKET REPAIR



**Stitch This**  
Blanket Repair and Cleaning

Quality Full Service Wash,  
Waterproof, Repair, Customization

Customer satisfaction comes first

Michelle Beachley, Owner  
26020 Long Corner Road  
Gaithersburg, MD 20882

301-717-7671  
stitchthisblanket@gmail.com  
www.StitchThisBlanket.com

## DESIGN SERVICES

**JUMP-START YOUR BUSINESS**

Affordable Web Design  
Logos • Graphics • Photos

Reliable & Experienced  
**ENTICE DESIGN, LLC**

**443.798.0709**

www.entice-design.com

## APPRAISALS

## ARTISTS

## ATTORNEYS

## BEDDING

## BLANKET REPAIR



**CELEBRATION Farm**

- Horse Blanket Washing & Repair
- Quick Turn-Around
- Monogramming
- Space Bag Storage
- Delivery
- Free Pickup of 20 or more

**443-745-0207**

9961 Green Valley Road, Union Bridge, MD 21791  
www.celebration-farm.com

## BRAIDING/GROOMING

**Wendy's Clip Art**  
**Body Clipping & Mane Pulling**

Over 30 Years Experience  
All styles - adapted for owners'/horses' needs

At Your Barn & Convenience  
Wendy Emblin  
410-984-2998 (cell) • 410-489-7031

## EQUINE NUTRITION

More than 60 proven products for your horses, livestock and dogs!

"Feeding Champions Since 1983"



**dac**  
DIRECT ACTION CO., INC  
6668 Old Rt 39 NW, Dover, OH 44622  
info@feeddac.com - 1-800-921-9121

WWW.FEEDDAC.COM

## CARRIAGE RIDES

## CONTRACTORS



**P.H. DRAYER CO INC**

BUILDINGS • BARNs • FENCING  
301-473-4466  
FAX: 301-473-4424

www.phdrayerco.com Jefferson, Maryland 21755

## FARM SERVICES

## FARRIERS

## FENCING

**HORSE BLANKETS**

QUALITY  
WASH & REPAIR  
WATERPROOF



Shim Jensen  
410-310-5874

**DROP OFF LOCATIONS:**  
Dover Saddlery, Crofton, MD  
Outback Leather, Laurel, MD

**Chester County Fencing Provides Quality Horse Fencing!**

Vinyl Horse Rail • Post & Board • Centaur • Mesh Wire  
Split Rail • Slip Board • Run-In Sheds



Call for a Free Consultation!  
610-273-3300

**HORSE BLANKET KARE**

• See Classified in Saddles/Tack for Blanket & Tack Liquidation •

Wash, Repair,  
Waterproofing &  
Consignments



Kathy & Karrie Recknor  
(301) 330-5551  
14711 Seneca Road  
Darnestown, MD 20874

ADDITIONAL  
FREDERICK  
LOCATION

Building with Integrity  
- Since 1997



**White Horse Construction**

Horse Barns • Riding Arenas • Bank Barns  
Garages • Agricultural Buildings

ph: 610-593-5559 Simeon@whcbarns.com  
www.whchorsebarns.com

**Esch's Fencing**  
Quality Products & Workmanship Since 1987



Split Rail, Post & Board,  
Slip Board, Woven Wire,  
Treated & Locust Post,  
Custom Wood & Steel Gates  
P.V.C. & Aluminum Fence  
Pool Enclosures  
and More!

Call today!  
**610-857-1676**  
eschfence@gmail.com

## DENTISTS

**SEW WHAT**

HORSE BLANKET  
WASHING,  
WATERPROOFING & REPAIR



**Barb Carr** 410-984-0167

3380 Salem Bottom Road sewwhatblankets@verizon.net  
Westminster, MD 21157 www.sewwhatblankets.com

**FAVRE EQUINE DENTISTRY**

All Breeds - All Levels - All Disciplines

**Bruno J. Favre, EqDT**

Cell (410) 935-1478  
Home (410) 867-0605  
brunofavre@verizon.net

Certified by VA Board of Veterinary Medicine  
Serving Equine Professionals on the East Coast and Abroad



**P.H. DRAYER CO INC**

BUILDINGS • BARNs • FENCING  
301-473-4466  
FAX: 301-473-4424

www.phdrayerco.com Jefferson, Maryland 21755



# SERVICE DIRECTORY

## FENCING



**PROFENCE LLC**  
We Build to Please

High Tensile • Board Fence • Woven Wire, Non-Climb  
• Poly-cote Horse-safe wire • Horse Rail • Deer Fence

**877-736-8244**

Serving PA, MD, WV, VA, NJ, NY  
sales@ProFence.org • www.ProFence.org

## FINANCIAL SERVICES

### HAY & STRAW

**England Acres • Hay and Straw**

Round & Square Bales • Mixed Grass  
Timothy • Alfalfa/Orchard Grass Mix • Straw

**ON TIME DELIVERY**

Also: Skid Loader Work & Pasture  
Management and Renovations  
Frederick & Surrounding Counties

**JEFF ENGLAND** | 240-674-2030 Cell  
707-972-6291 Cell

### Preston Hay & Straw

Stock up for winter.  
Round Bales • Square Bales  
Prices depend on quantity  
distance, etc.

**An industry leading hay and  
straw dealer since 2000,  
supplying high quality products.**

- ◆ Western Alfalfa & Timothy
- ◆ Quality horse hay and straw, from small loads  
to very large loads to accommodate your needs.
- ◆ Delivery available
- ◆ Call, Text or Email all orders or information

**Peter Preston**  
443-271-0865 • pmpreston1980@gmail.com

## INSURANCE

**Hogendorp Insurance Advisors**

Serving: Maryland, Pennsylvania, Virginia & West Virginia  
www.HogendorpInsurance.com  
Email: info@hogendorpinsurance.com  
Office: 443-639-5440

**Farm \* Auto \* Home \* Life \*  
Business \* Equine**

**INSURANCE**

## MASSAGE

### PHOTOGRAPHY

Tammie J. Monaco Photography



Photos of all  
things equine

tammiemonaco.smugmug.com

## PERSONAL SERVICES



Brendon &  
Chelsea Spear

Caprika  
Realty

bspear@caprikarealty.com  
www.annapolisdigs.com

C: 240-605-9569  
O: 410-571-4080

## PET/HORSE/FARM SITTING

### SADDLE FITTING



**HCS, USA Saddlery**  
Saddlery Fitting Services & Sales

Multi-Brands Fittings • New & Secondhand Sales  
• Reflocking • Repairs

Call for an appointment 717-294-6757  
info@hastilowusa.com | www.hcsusasaddlery.com

Society of Master Saddlers Qualified Saddle Fitters



When your horse wants to wear a saddle that fits

**SADDLE FIT CONSULTATION**

301-739-6615    twoxtack@verizon.net

## TRAILER REPAIR

SALES • SERVICE    Alice & Pete Drayer

**BLUE RIDGE  
TRAILERS LLC**

**AUTHORIZED TRAILER DEALER  
FOR GORE TRAILER MFG. & CALICO TRAILER MFG.**

www.blueridgetrailers.com    PHONE 301-473-1234  
JEFFERSON, MARYLAND    FAX 301-473-4424

## C & C Manufacturing, Inc.

Est. in 1974

Trusted service for those who tow

8255 Beechcraft Ave. • Gaithersburg, MD 20879  
(Near the Montgomery Co. Airpark)

**301-921-0014 • cctrailer.com**

Mon. - Fri.: 8am - 6pm • Sat.: 9am - 1pm

Complete Trailer Maintenance, Service & Repairs  
Painting & Modifications • Trailer Floor Replacement  
Sales, Installation & Fabrication of Standard & Custom Hitches  
Expert Trailer & Tow Vehicle Wiring & Brake Systems  
Extensive In-Stock Parts Department with Standard & Hard-to-find Items  
Authorized Maryland Inspection Station



**TRAILER  
REPAIRS**

Trailer and Equipment Sales, Inc.

Complete Line of Trailer Parts and Trailer Accessories

9409 Old Marlboro Pike Upper Marlboro, MD 20772

**301-599-6285**  
www.coxtrailersalesinc.com

## LEATHER WORK/REPAIR

**OUTBACK LEATHER**

Custom Leather Work

Boots & Shoes repaired  
Saddles Custom Fitted  
Blankets Cleaned & Repaired  
Chaps & Saddle Bags for Horse & Motorcycle  
CUSTOM MADE, ALTERED, REPAIRED

Store Hours    **Ronald Sargent**  
10-5 T-F    309 Main St. Laurel, Md.    301-604-2211  
10-2 Sat    www.mdoutbackleather.com

## SHIPPING

**MILLENNIUM  
HORSE TRANSPORTATION**

- Local & Long Distance
- Over 30 Years of Experience
- Emergency Services Available

**Donna Matthews**  
(443) 309-1975  
dmatthews0111@gmail.com

## VETERINARY SERVICES



Trust SBS  
With Your Equine  
Reproduction Needs!

Chesapeake City, MD | 410-886-3202

www.selectbreeders.com



Thanks to  
all of our clients  
for helping us  
to be named in the  
**TOP 1%**  
OF ALL REALTORS  
IN MARYLAND!

# THE TRACY DIAMOND TEAM




## 7+ Acres — Mt Airy (Howard Co.)

4 BD, 2.5 BA Colonial with hardwood floors though most of the house, masonry fireplace, 2-car attached garage, PLUS very nice 1 BD in-law suite/apartment attached to the main level, with separate entrance as well as entrance to main house. Main house basement ready to be finished to your liking. Efficient barn with 4 stalls, electric and hot water. Convenient commuter location. MDHW2004372 \$769,000

## 5 Acres — Mt Airy (Carroll Co.)



### NEW TO MARKET!

Almost 3,000 square foot colonial on 5 wooded acres. Very private but EASY access to Routes 94 and 27 and 26. Fully remodeled over the past few years w/dream kitchen and main level Primary bed and bath addition. 3 additional bedrooms upstairs. Many custom features and upgrades. NO HOA. MDCR2000139 \$699,000



### NEW TO MARKET!

## 10+ Acres — Mt Airy (Howard Co.)

Solid brick rancher situated on over 10 scenic and gently rolling acres. Flexible floor plan with over 1,500 square feet on the main level that is ready for your updates. Two outbuildings include a block barn with stalls and a 60' X 60' barn/storage building with many uses. Property does have opportunity for subdivision. MDHW2000173 \$625,000

## Private 63+ Acre Enclave—Glenwood (Howard Co.)



Overlooking the Dorsey Branch of the Cattail River is this 7000+sf custom Colonial. Quality-built, substantial 3-level home accommodates a large family, multi-generational living, nanny suite, and entertaining, with ample options for home offices and studies for remote learning,

plus generously-sized common areas. A second home is also graced by mature trees, allowing each home plenty of privacy. 4 BD, 2.5 BA, this traditional farmhouse can be part of a family compound or provide substantial rental income opportunity. Newer roof & water heater, replacement windows. Heat pump/central air. Current tenants have interest in staying or require 90-day notice to vacate. Mostly mature woods with trails, 20 +/- acres of pastures/productive hay fields, surrounded by other Agricultural Preservation properties/parcels, and protected from most any additional residential development. Bank barn has had considerable restoration work and has recently been used for horses. It offers 4+ stalls, hot water, electric, tack room and large grooming area. Several run-in sheds provide shelter in the separate paddock areas. Much of the property is board fenced. Located in the Glenwood area, just minutes from Routes 97 and 32, 170, Cattail Creek Country Club, restaurants and shopping. This is not a drive-by property and is best appreciated by enjoying a private tour. MDHW2002974 \$2,050,000

## 126+ Acres Myersville (Frederick Co.)

FIRST TIME AVAILABLE to the public in over 150 years! 126.25 acre farm with stunning views in Myersville, only 7 miles from Frederick, easy drive from Washington DC. Classic, historic 3,000+ sf, all-brick Federal-style home, with original main staircase, classic sleeping porches, a back staircase, probably original mantels, and more. Tax records indicate the house was built around 1900, but family records indicated that it was probably built prior to 1860. Unfortunately, left vacant since 2015, but is now ready for redemption and renovation to once again proudly reign over this prime farm-land. 93 tillable acres currently in crops to local farmer, can be converted to hay and pasture. Large center-aisle dairy barn with hay storage above could easily be converted to horse stalls. Property retains subdivision rights and is also eligible for ag preservation program which pays substantial cash in exchange for the release of development rights. MDRF2003966 \$2,300,000



Property also includes a tenant house, smoke house and other outbuildings, all in need of renovation. 150 tillable acres, currently in crops to local farmer, could easily convert to hayfields and pastures. Property retains subdivision rights and is also eligible ag preservation program which pays substantial cash in exchange for the release of development rights. MDRF2003970 \$3,400,000

## 167+ Acres Middletown (Frederick Co.)

FIRST TIME AVAILABLE to the public in at least 100 years! 167.5 acre farm with stunning views in Middletown, only 7 miles from Frederick, easy drive from Washington DC. 2 houses on property. Main house is a classic Maryland all-brick farm house in the Federal-style, built 1890 according to tax records (possibly earlier); 2,720+above grade square feet, with 4 bedrooms, 2.5 baths and classic porches to watch the sunrise and sunset. Main house is leased.

We have buyers for farmettes in Montgomery, Carroll, Howard and Frederick Counties that are suitable for horses and have 8+ acres of pasture priced under \$1M.



Tracy Diamond • The Tracy Diamond Team • eXp Realty, LLC



Mobile: 410.984.2501 • Office: 888.860.7369 • [Tracy@TracyDiamondTeam.com](mailto:Tracy@TracyDiamondTeam.com) • [www.TracyDiamondTeam.com](http://www.TracyDiamondTeam.com)

1121



# REAL ESTATE

## For Rent - Damascus

Luxury 1BR, 1.5BA. HVAC, internet, Direct TV, kitchen, living room, den, garage, deck. Includes 2 stalls and pasture w/ run-in shed. \$2250/mo. 301-768-8454



**24 Miles Way Centreville Md 21617:**  
Listed at \$847,000 MLS#MDQA2001188. 10 ACS This beautiful horse farm is situated on nearly 11 acres backing up to trees! It is definitely one of a kind & a rare opportunity!! This 1992 custom built home has a large kitchen/family room combo w/ upgraded cabinets, a gas fireplace & glass galore to watch the sunrise, your horses or livestock & or just wildlife/ nature. See listing for more details! Lona Sue Todd, Taylor Properties Lstodd11@outlook.com 410-310-0222



**Spectacular 13ac equestrian estate:** in Cecil Co. w/beautiful water views. Farm is ideally situated midway between Philadelphia & Baltimore. Only 2hrs to NY. 1hr to Annapolis or DC. Main residence designed to maximize water views from nearly every living space & BR. Continue water adventures from your inground pool or launch your boat from any of the 3 nearby boat basins. Well ventilated 5 stall barn w/wash stall, tack room/office, & fully finished 1 BR apartment with kitchen/laundry/bath above. The Morton shed is large enough for your boat, RV, a shop and more. Janina Freerks, Keller Williams Select Realtors: 443-584-5846(C), 410-972-4000 (O), Janina\_freerks@kw.com. MDCC2001140, MDCC2000438



Farm Credit proudly supports America's farmers and their families as they continue to provide agricultural goods for our nation.

**FARM CREDIT**  
888.339.3334 | mafc.com | Facebook | Twitter | Instagram

# FARMS & LAND



## ■ MONTGOMERY COUNTY



**DAMASCUS:** 58 acre Estate lot with a 5 BR perk, mostly open with a 360 degree view of the Sugarloaf Mountain Reserve. A tree lined driveway has been constructed. Suitable for many agricultural uses allowed in the AR Zone. Good access to RT. 270 and RT.70 Price upon request.

## ■ FREDERICK COUNTY

**ADAMSTOWN:** Nearly 7 acres, improved by a mid-1800s stone, 3BR, 2 1/2 BA farmhouse with access to the Sugarloaf Mountain trails network and close proximity to the Maryland Horse Trials at Loch Moy Farm. Also includes a large black barn and other support buildings. Needs fencing, but the pasture is there. Property also has a small pond. Price upon request.



Exclusive Buyer Brokering Available

Call  
**T.I. McGrath**

at Mackintosh, Inc.  
Realtors.

**Tim the Trail Man**

I have over 35 years  
developing trail access.

(800) 292-3547

(301) 662-0155

(800) 727-7653 x305

Check out my website at [www.timthetrailman.net](http://www.timthetrailman.net)

0721

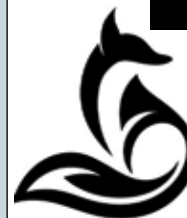
25440 Old Hundred Rd., Dickerson MD 20842



\$988,888

Welcome to Hidden Heights Farm, a thoughtfully designed 11-acre horse farm which boasts a 7 stall barn with wash stall, tack, and feed room. All 7 paddocks have electricity and water; one paddock has run-in shed. Indoor arena and outdoor arenas. Main house is perfectly situated for stunning sunset views with over 3400 sq ft of living space, including 5 spacious bedrooms, 3.5 BA, and a back deck perfect for stargazing. The lower level is completely finished with a kitchen, full bath, bedroom and open living room. It has its own walk out entrance with courtyard. Conveniently located with access to 270. Contact listing agent Mike Fox, 301-938-3148, or [mikefoxrealtor@gmail.com](mailto:mikefoxrealtor@gmail.com). MDR2004344

TOP PRODUCER  
WASHINGTONIAN  
2021, 2020



**Michael D. Fox, CRS**  
301-938-3148  
[www.michaelfox.com](http://www.michaelfox.com)  
Samson Properties

1121

Ask me about  
**HomesHelpingHorses.org**

Your next home sale could help rescue horses.

**DAVIDSONVILLE**

ACREAGE: 32.89

BEDROOMS: 4

BATHROOMS: 2



Training Farm? School? Multi-purpose buildings? Farm-to table? First time ever offered for public sale in Davidsonville is an incomparable equestrian training farm with many other potential uses sited on 32.89 acres which includes 2 separately recorded and deeded building lots of 6 & 8 acres. The farm buildings were beautifully designed and crafted in 2010. The property includes a barn like no other with 20 stalls, 4 permanent grooming racks, 2 hot/cold wash racks, 1 vet/farrier stall, gathering or meeting room with kitchenette, climate controlled office with full bath, climate controlled tack room with custom Cherry wood tack lockers and tack cleaning sink, separate half bath, laundry room, large feedroom, fireproof hay storage area with over-sized doors, covered patio, two large tack trunk storage areas and double height ceilings. The indoor riding arena is a rigid built 120 X 240 building with 25 windows, 5 glass over-sized mechanical doors, observation area, full kick boards and Euro-felt style footing. The property also offers an Olympic sized outdoor riding ring too along with several board fenced paddocks. Separate outbuildings for jump storage and tractor storage. The detached house is circa 1981 and offers two distinct living areas with a total of 4 bedrooms and 2 full baths. Shown by appointment only. VIDEO WALKTHROUGH <https://iplayerhd.com/player/video/f40dd2ed-dc90-4ee9-a3d7-b9c300d6ebf2/share>

**Proudly serving Maryland & Pennsylvania**



Looking to

**BUY OR  
SELL A  
HORSE FARM  
PROPERTY?**

Call the Laura Jones Team!

Selling farms & homes for 20+ years!



Laura.Jones@longandfoster.com  
Cell phone: 410.707.7246  
Office phone: 410.480-3338



Proud member

f / myhomenow



1121

For current listings visit: [www.TheLauraJonesTeam.com](http://www.TheLauraJonesTeam.com)

**Meet the Laura Jones Team...**

**LORNA DELLA**

**Northern MD & PA Specialist  
443-226-8687**

**SHARON LADDIE**

**Southern Maryland Specialist  
410-703-0797**

**KEN MACKAY**

**Montgomery, Howard & Frederick  
Counties & Investment Specialist  
240-446-9876**

**DANIEL "DAN" MANGAN**

**Montgomery County Specialist  
301-730-0610**



## 26+ Acres Howard County



Tree Tops Farm - One of Howard County's finest hidden gems. Turn key property w/4-board fencing & cross-fenced with 8 fields & 3 paddocks w/7 run-in sheds & auto waterers. The center-aisle barn, refreshed by B & D Builders, has 6 matted stalls, tack room w/laundry & wash stall, 400 bale hay storage, plus 1 BR/1BA renovated apartment. Full size Surefoot rubber arena, tennis/sports court & in-ground salt water pool. The fully restored & expanded 4,500+ sq. ft. farmhouse maintains its original charm & historic character while elegantly accommodating 21st century living. Gourmet kitchen w/SubZero & Wolfe, butler's pantry w/wine fridge, library, 2 stone fireplaces. 4 BRs, luxury bath w/rain shower, walk-in closets, laundry & additional full BA on UL. LL features rec room, workshop & 350 bottle wine cellar. Multi zoned heating/cooling w/built in generator. Multiple sheds & covered bays for cars, trailers & equipment. Stocked pond w/bluegill & bass. Extensive hardscape, field stone walkways & landscaping throughout. Tree lined driveway w/automatic gate provides beauty & privacy. Ag preservation. Convenient to major commuter routes to Baltimore, Frederick & Washington, DC. Call for new pricing info. For a tour, visit [www.bit.ly/12645oldfrederick](http://www.bit.ly/12645oldfrederick)



**Christine Kogok** of  
Keller Williams Realty Centre

(c) 240-277-9121 • (o) 410-312-0000  
[christinekogok@gmail.com](mailto:christinekogok@gmail.com)  
[www.christinekhomes.com](http://www.christinekhomes.com)



1121

## UPPER MONTGOMERY COUNTY!



Fantastic opportunity for a turn key farm in Poolesville School District - 23 plus acres with fully remodeled (2019-2020) 6BR, 3.5BA home with au pair/in-law suite. Plus a 14 stall stable with automatic waterers, mats, 2 tack rooms, wash stall, grooming stall. Oversize (70 x 200) dressage arena with GGT all weather footing. A sanctuary just a mile from MARC Train and 50 minutes to DC. **\$1,399,000**



Boyd's/Potomac Hunt Country: "Honey Acres" - First offering of this 77-acre Thoroughbred breeding farm - home to multiple stakes winners. Fenced and cross-fenced with Saratoga fencing - 30 stall stable plus a stallion barn. Multiple housing, plus a beautifully-sited, 1800s stone residence. Great location and in Poolesville School District - Subdivision possibilities. Price Upon Request.



Barnesville/Potomac Hunt Country: Encompassing 141 acres this incredible farm features two exceptional homes plus a garage apartment. Pastures, cropland, two ponds, stream and trails. Create your own dream - equestrian, event venue or both. Stunning views of Sugarloaf Mountain. Convenient to major roadways, Washington, DC area and Frederick. High speed internet and Poolesville School District. **\$2,995,000**

*Experience equates advantage-Toni has 33 years of experience selling equestrian properties and farms.*



"Hunting" for a Realtor with at Great Track Record?

**TONI KOERBER**

*Specializing in horse properties and country estates.  
Licensed in Maryland, Virginia, and District of Columbia.*

A Christie's Great Estate Affiliate Broker • 10200 River Road • Potomac, MD 20854 • 301-299-6000

Check Toni's web site for more detailed information

[www.tkhomes.com](http://www.tkhomes.com)

Cell: 301-802-6770



1121



## 325 RENTZEL RD, GETTYSBURG, PA

### NEW LISTING!



Turnkey 40 acre equestrian facility ideal for breeding, training, and boarding with a beautiful 5 bedroom home. HUGE income potential here! This farm offers 18 stalls, a large indoor arena with sand footing, an outdoor conditioning track, and over 37 acres of safely fenced flat open well-maintained pasture. The main house offers 4 bedrooms, an updated kitchen with new appliances, gorgeous wood floors and fresh paint throughout, updated baths, and a roof that's just 3 years old with solar panels to cover most of your electric bill! The attached first floor in-law suite offers an additional full kitchen, large 5th bedroom with attached bath with soaking tub, and large family room with wood stove insert in the fireplace. The basement offers additional space to finish with a cedar closet and fireplace. Outside the discriminating equestrian will find two barns. The main barn offers a center aisle design with 11 stalls including a foaling stall that could be converted back to two stalls as well as a heated wash stall and large tack and feed rooms. The upper barn offers 7 stalls and its own separate feed and tack room. There is a large detached garage with electric perfect for housing your trailer and workshop as well as a large coverall hay storage shed that can easily hold 500 small square bales. There is plenty of space for training and conditioning horses here as well with a covered hot walker, large coverall indoor arena, and well maintained conditioning track in addition to 37 acres of flat open pasture. Property is in Clean and Green. Shown by Appointment Only. Roof and HVAC are less than 5 years old. \$1,000,000.



WWW.TROTWOODSTABLE.COM

### TROTWOOD STABLES

Incredible opportunity to own a thought-fully designed equestrian property in the heart of Woodbine. This property has been carefully created for the breeding and training of international dressage horses and boasts not only a three-stall center-aisle barn and four additional shed row stalls, but also a stunning indoor arena with custom blended footing, tall kick boards, and mirrors. Gorgeous updated five bedroom home with newly added owner's suite completes this turnkey property. \$825,000

## 7401 MORGAN RD, WOODBINE, MD

This property boasts not only a three-stall center-aisle barn and four additional shed row stalls, but also a stunning indoor arena with custom blended footing. Gorgeous updated five bedroom home with newly added owner's suite. \$875,000



### UNDER CONTACT!



## MELISA KLEM

Cell: 301.602.8117 • Office: 866.424.2601  
MKlem@HaganRealty.com

### NEW PRICE!



WWW.4346BASFORD.COM

## 4346 BASFORD RD, FREDERICK, MD

This 30+ acre country estate in Frederick County features a large custom home, 6-stall center aisle barn with hot water wash stall, large tack room and feed room, grooming stall, three fields, two paddocks, two goat pens and a poultry pen. Privacy abounds, relax in the hot tub while you watch your horses with the mountain views in the background. \$1,299,000



WWW.BUYLOCKEMEADOWS.COM

### LOCKE MEADOWS FARM

## 0 WADESVILLE RD BERRYVILLE, VA

70 Acre historic property and turn key event facility available for the very first time, complete with 3 show rings, full course of custom jumps, show office, judge's stands, sound system, and equipment. This income-producing showgrounds offers enormous potential for future growth and includes a homesite with 3 bedroom perc, two additional dwelling rights and ample space for the custom barn and indoor arena of your dreams. Priced to sell at \$625,000.



## DENISE PARSONS

Cell: (240) 506-1713 • Office: 866.424.2601  
Dparsons@haganrealty.com





# ADOPTION OPTION

## Maryland Equine Transition Service



Pickles: 2007, 15.2h Thoroughbred Gelding. Pickles is a joy to spend time with and one of those horses you immediately fall in love with! He loves children and all people alike! Companion only home due to severe Kissing Spine. Barefoot, up to date on shots and coggins.

410-970-6474; horses@mdequinetransition.org;  
www.mdequinetransition.org

## Gentle Giants Draft Horse Rescue



Abigail: 18 year old Percheron QH cross mare. Walk trot canter for intermediate rider. Can be pushy on the ground when anxious.

adoptions@gentlegiantsdrafthorse rescue.org;  
www.gentlegiantsdrafthorse rescue.org

## Freedom Hill Horse Rescue



Sunny: 20 year old, dark brown/black, 15hh, Standardbred with a goofy personality. We believe Sunny's history was harness racing, then pulling carts for Amish. Rescued from the kill pen at auction in February of 2021. Started under saddle at walk, and working on the trot. He is still a little unsure of himself but doesn't pull any antics. No buck, rear or runaway. Gets along with other horses. UTD on everything. Good for vet, farrier, dentist & trailer.

freedom.hill.org@gmail.com; www.freedomhillhorse rescue.com

## Lifeline Horse Rescue & Rehab., Inc.



Batilda: aged Standardbred ex-buggy horse. She is sweet and kind, safe around children. Batilda has wear and tear from a hard life and is ready for a loving, forever home as a companion.

301-318-1686; leila@lifelinehorse rescue.org; www.lifelinehorse rescue.org.

## The Foxy G Foundation



Thatwouldbegrand: Lovely, 5 yr old TB, 16.1H gelding. Grand is still a little forward under tack so an advanced intermediate to advanced rider would be best. Should stick to lower level jumping around 2'6" & does make some noise when cantering. Fine for local shows but would be penalized at rated hunter shows for the breathing noise. Adoption Fee \$500.

301-667-2553; whinnywhiskers@thefoxyg foundation.org;  
www.thefoxyg foundation.org

## Middle Ridge Farm & Rescue



Jill: 13 y.o mare just under 16 hands. Enjoys attention and grooming. Many other special senior horses looking for safe pasture homes.

301-305-6440; info@middleridgefarm.com;  
www.MiddleRidgeAnimalRescue.com

**Safe Haven Equine Warriors** is pleased to announce that Alfie has found his new best friend.

Wishing Bethany and Alfie a wonderful future together.



## Southern Maryland Equine Miracles



Three gelding Minis: Our preference is to rehome together, if possible. Ages, 20, 12 and 3. Sweet and gentle, UTD on shots, Coggins, dental, farrier. Available in December.

301-609-1282; somdequinemiracles@gmail.com;  
www.southernmarylandequinemiracles.com

## Days End Farm Horse Rescue



Handsome Henry: 2000, 15.0hh, Tri-Colored Paint. Henry goes w/t/c, English and Western. Enjoys trail riding, brave and confident both alone and with a group.

301-854-5037; Adopt@defhr.org; www.defhr.org

## Gentle Giants Draft Horse Rescue



Rune: 8 year old Standardbred gelding. Fully blind but well adapted. Rune loves to play with young horses in his pasture.

adoptions@gentlegiantsdrafthorse rescue.org;  
www.gentlegiantsdrafthorse rescue.org

## GAIT, INC.



Kira: 13yo registered Paso Fino mare, stands around 14h. She is up to date on vaccines and farrier care, and is waiting for a kind adopter who loves riding adventures on the trail. Adoption fee \$1600 in Dillsburg, PA.

Visit [www.gaitrrr.org](http://www.gaitrrr.org) for details

## MidAtlantic Horse Rescue



Trewish: B.f., 15.3+ growing, 2018. 2021/22 RRP Makeover Eligible. Lightly raced, ready for any discipline. Adoption Fee: \$1800. Other nice TBs available.

302-376-7297; Bev@MidAtlanticHorseRescue.org;  
www.MidAtlanticHorseRescue.org

Contact Tracy at [tracy@equiery.com](mailto:tracy@equiery.com)  
to place your  
**Adoption Option for December**

**To be included in the Adoption Option,  
your rescue must be registered with the  
Maryland Secretary of State  
Charitable Organizations Division**

<https://sos.maryland.gov/Charity/Pages/Instructions.aspx>

**MHC IP**





# LIFE & TIMES

of Marylanders

## MARYLAND WILL MISS...

**Thomas F. Harvey Jr.** died on September 5 at the age of 87. Harvey was born in Boston, Massachusetts, and served in the U.S. Navy before becoming an English teacher in Baltimore County. He had a horse farm in Monkton and was a supporting member of Elkridge-Harford Hunt Club and Mt. Carmel Hounds.

**Walter Wickes Brewster** of Lutherville died on September 8 at the age of 90. Brewster was a retired stockbroker for Alex. Brown & Sons as well as a conservationist and fox chaser. Brewster was born in Baltimore and was a descendant of Benjamin Franklin and Benjamin Harris Brewster, the U.S. Attorney General from 1881 to 1885.

Brewster graduated from the Gilman School in 1950 where he was captain of the wrestling team. In 1953, he married Margaret Rennert Perkins while attending the University of Virginia. Brewster graduated from UVA in 1954 and served in the U.S. Army, stationed in Germany. After his Army days, the Brewsters purchased 130-acres in Glyndon to establish Milestone Farm. The couple remained there until 2001 when they sold the property and moved into a house off Butler Road they called The Covert.

Before joining Alex. Brown & Sons in 1967, Brewster worked for Baugh & Sons Co., a phosphate fertilizer and agricultural company affiliated with Baugh Chemical Co. in Baltimore. With Alex. Brown & Sons, Brewster was a stockbroker and chaired the firm's charitable foundation until he retired in 2000. The Brewsters also established a Brewster Family Fund at the Baltimore Community Foundation and donated to schools and organizations.

As a horseman, Brewster hunted with Green Spring Valley Hounds and also raced over timber. With the hunt club, he served as hunt secretary, treasurer and president at one time or another. As a timber rider, Brewster is most noted for completing the "Triple Crown" of

Maryland steeplechasing aboard Clifton Dan in 1948. That year, the pair finished second in the My Lady's Manor, fourth in the Grand National and third in the Maryland Hunt Cup.

After he retired from racing, Brewster continued to stay involved in the sport as an owner and by serving on the Grand National Race Committee for 30 years. He also served on the Maryland Hunt Cup committee for 25 years and was a founding member of Shawan Downs in 1997. Brewster was awarded the S. Bryce Wing Award in 2013 for his service to the sport of steeplechasing.

**Richard L. Golden** of West Palm Beach, Florida, died on September 18 at the age of 82. Golden was one of the founders of Northview Stallion Station in Chesapeake City, and he served as the company's President and CEO for over 30 years.

Golden was born in the Bronx and made a living in New York's garment industry, where he also became interested in Thoroughbred racing. He purchased property in Chesapeake City in 1986 and created Sycamore Hall Farm, which bred several stakes winners. In 2016, he was the breeder of three Maryland-bred champions: Giant Run, Greatbullsoffire and Top Striker. Golden was named Maryland Breeder of the Year in 2018.

When Windfields Farm, one of Maryland's largest breeding farms at the time, shut down in 1988, Golden, along with Allaire duPont and Tom Bowman, stepped in to keep sires Smarten, Caveat, and Two Punch in Maryland. They opened Northview Stallion Station in 1989 on the site of Windfields Farm's former Northview annex. They moved the farm to its current location in 1991. Northview Stallion Station added Waquoit, Polish Numbers, Private Terms, and Not For Love to its stallion roster early on. Not For Love was Maryland Stallion of the Year 13 times and Northview stallions have earned that title 24 times since 1989. Most recently, Great Notion has been Maryland Stallion of the Year for the past five years.

### Wilson "Butch" Gardner

*submitted by Lou Steinfert*

Legendary Maryland horseman Wilson "Butch" Gardner died on September 20 from complications of COPD. He was 69. Gardner grew up on the family farm, Oak Knoll Stables,



**Wilson "Butch" Gardner riding Pixie in 1964 at the Maryland Pony Show in Timonium.**

in Brandywine. The Oak Knoll Stables name is on many perpetual Maryland Horse Shows Association trophies as Gardner was often the winning rider.

He began riding before he could walk, following in his older siblings' footsteps. Gardner made his living as a professional rider and trainer, and also had a career as a farrier. As a young boy he showed many ponies to success including: Royal Mist, Severn Wings, Moon Comet, Farnley Hili, and Crown Prince. After showing in the juniors, Gardner showed many top hunters, but his first love was the jumpers. Some of his winning rides came on jumpers such as Third Eclipse, Lyrical Lou, and Marathon Mike. Other top local horses were Cutladdy's Champ, a stallion owned by Bette Sachetti of Finksburg, and Ringside Gossip, owned by Anton "Tony" Wilson of Annapolis.

After health concerns curtailed his riding, Gardner spent his last years in Chestertown, living at the home of his friend David Wright. For the past year, he enjoyed being the leader of a local AA meeting and Bible study group.

Gardner was predeceased by his parents Rufus Ransom and Mary Gardner, and siblings Randi, Gary, Billie Ann and Wayne Gardner. He is survived by his sister Bobbie Gardner Stedding Gibbon of Woodbine and two sons, Gary and Carl Gardner, both of California.

**Erika Sommer** of Harford County died on September 23 at the age of 38. She graduated from Aberdeen High School and earned a B.A. from Salisbury State in 2005. She spent most of her professional life working in IT in the health care industry. In her free time, Sommer was out riding her Thoroughbred Routie or camping with her boyfriend.

## WHAT IS LIFE & TIMES?

LIFE & TIMES OF MARYLANDERS IS A COLUMN DEDICATED TO LIFE & DEATH CELEBRATIONS OF MARYLAND'S EQUESTRIAN COMMUNITY. TO SUBMIT WEDDING & BABY ANNOUNCEMENTS, OBITUARIES AND COMINGS & GOINGS, EMAIL EDITOR@EQUIERY.COM



# TRAINERS/JUDGES/INSTRUCTORS



## Heather Achen

USEF "r" Judge; MHSA "R" Judge Hunter/ Eq. and Jumpers. VHSA and IEA approved Judge. 30+ yrs Teaching. Judging and Riding Clinics Available

240-888-6945; piaffe99@comcast.net



## Leslie Deering

Event-Show-Fox Hunt. Classically trained by Olympians, making it happen in the real world. Specializing in building confidence using sports psychology principles. Trained Pony Club A's, upper lvl eventers, h/j & pleasure riders seeking safe fun. 30 yrs w/numerous ref. Lic. insured. Will travel

301-706-4642; www.GlendeonStablesLLC.com



## Nancy Dawn Ashway

Judging: USEF "R" Hunter, Breeding, & Eq; "r" Jumper & MHSA "R" Hunter & Hunt Seat Equitation, Hunter Breeding, Jumper. Clinics Boarding, Training, Sales, Lessons

410-253-7252; horseshowjudge@countrycomfortfarm.com; countrycomfortfarm.com



## Tina Legno

Classical Horsemanship Training & Instruction - Solutions for Soundness, Performance, Behavior, and Balance Issues-Groundwork/Work In Hand/Lungework-Improve Communication & Connection-Virtual Inst. Available. Alivio Equestrian Academy

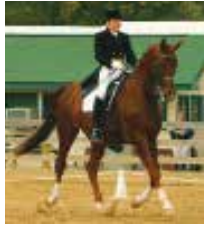
571-577-7447; aliviofarm@gmail.com; www.aliviohorse.solutions



## Yvonne Atwood

British Horse Society Intermediate Instructor & USDF Bronze & Silver medalist. Traveling to you teaching classical drsg, rider biomechanics & correct grndwrk. Let me help you start/retrain/improve your horse while also teaching you "how & why" & "feel & body awareness". All levels.

240-529-8707; yaatwood@hotmail.com; www.mindfuldressage.com



## Jane Seigler

USDF Silver Medalist. Dressage instruction. Beginner to 4th Level, focused on helping horse and rider find confidence in their balance, discover better relaxation, and maximize athletic performance. Extensive training with Walter Zettl, Linda Zang and Ulf Wiltfang.

301-774-3756; seigler.jane@gmail.com



## Bob Ciri

John & Josh Lyons Certified Trainer - Helping horses & riders improve communication, solve behavior problems & gain riding confidence. Lessons focus on developing balance, increasing understanding of aids, & improving movement. Also exp w/rehab for horses coming back to work.

301-928-2828; help@horsesupport.com; www.horsesupport.com

Interested in joining  
the directory for  
**Trainers, Judges & Instructors?**  
**CALL 410-489-7826 TODAY!**

# Greener Pastures

Honor the memory of your beloved animal with a  
Greener Pastures Roll Call or Memorial Ad.



Contact Tracy • 410-802-4219  
tracy@equiery.com

Roll Call Sponsored by



www.agapepetservices.com

# EQUIERY ADVERTISER INDEX

YOUR MARYLAND HORSE COUNCIL PUBLICATION

\* = EQUIERY DISTRIBUTOR  
 ▶ = MHC INDUSTRY PROFESSIONAL MEMBER  
 ▶ = MHC ASSOCIATION MEMBER

## APPAREL / TACK & EQUIPMENT

- \* ▶ **Emge Equine Services** .....51  
www.earthhorse.com
- \* **Outback Leather**.....16  
www.mdoutbackleather.com
- \* **Stablemates** .....12  
www.stablematesinc.com

## AUCTIONS & SALES

### BARN/S/BUILDING & FENCING

- Double S Construction** ..... 5  
double-s-construction.com
- ▶ **Paradise Energy Solutions** ..... 34  
www.paradisolarenergy.com
- \* **PH Drayer**..... 26  
www.phdrayerco.com
- Precise Buildings LLC**.....14  
precisebuildings.com/
- ProFence** ..... 34  
www.profence.org
- WB Lightning Rods** ..... 27  
wblightningrods.com

## BREEDING

## CLUBS, ASSOCIATIONS & EDUCATION

## EQUIPMENT

- \* ▶ **Rippeone Equipment Company** .....19  
www.ripeeonequipment.com

## EVENTS, SHOWS, RACES & CLINICS

- Lisbon Christmas Horse Parade**.....18  
www.lisbonchristmasparade.com
- \* ▶ **Loch Moy Farm**.....12  
www.lochmoyfarm.com/
- Md Horse Council Annual Meeting**..... 8  
www.mdhorsecouncil.org
- ▶ **Maryland Thoroughbred Eventing**..... 32  
www.mdteventing.com
- MHC Trails Clean Up**..... 34  
www.mdhorsecouncil.org
- Mount Harmon**.....16  
www.mountharmon.org
- ▶ **Potomac Valley Dressage Assoc**..... 32  
www.pvda.org

- ▶ **Waredaca, Inc.**..... 11  
www.waredaca.comrg

## FARM & PASTURE SERVICES

- Clarksburg Plumbing**.....25  
www.clarksburgplumbing.com
- Equi-Roll Transport**..... 28  
www.equirolltransport.com
- ▶ **First Class Mechanical** ..... 29  
www.firstclassmechanical.com
- MAAC Rolloffs & Equine Service** ..... 5  
www.midatlanticagconsulting.com
- ▶ **Pine View Trucking** ..... 25  
www.pineviewtrucking.com
- RB Savage & Sons Farm, LLC**..... 33

## FEED

- \* ▶ **Farmers Cooperative Assn** ..... 6  
www.farmerscoop.com
- \* ▶ **Farmers Cooperative Assn./ADM** ..... 36  
www.farmerscoop.com
- \* **HC Summers** ..... 22  
www.www.hcsummers.com
- Legends Horse Feeds/Cargill**..... 2  
www.legendshorsefeed.com
- \* **R & D Cross Inc.**..... 30  
www.randcross.com

## FINANCIAL SERVICES

- ▶ **J. Allen and Associates**..... 8  
www.frederick-cpa.com
- ▶ **MidAtlantic Farm Credit**.....41  
www.majc.com/

## FOOTING

## GIFTS

- ▶ **Believing In Horses** .....12  
www.believinginhorses.com
- St. Francis Pet Medals** .....16  
www.stfrancispetmedals.com

## HAY, STRAW & BEDDING

## HORSE CARE PRODUCTS & SERVICES

- ▶ **Days End Farm Horse Rescue** ..... 22  
www.defhr.org
- ▶ **Maryland Fund for Horses** .....14  
www.mdfundforhorses.org
- ▶ **METS**.....16  
www.mdequinetransition.org
- Southern Maryland Equine Miracles** .....1  
www.southernmarylandequinemiracles.com

## HORSE SHOW SERVICES

## INSURANCE

- ▶ **Christmas Insurance** ..... 27  
www.Christmasinsuranceagency.com

## LEGAL SERVICES

- ▶ **Saltbox Consulting** ..... 8  
www.thelawoflifesciences.com

## MISCELLANEOUS

- ▶ **Elite Chiropractic & Sport**..... 8  
elitechiropractic.com
- Horses for the Soul**.....14  
www.horsesforthesoul.org

## REAL ESTATE

- ▶ **eXp - Tracy Diamond Team** ..... 40  
www.tracydiamondteam.com
- ▶ **Hagan Realty** ..... 44  
www.thehomesteadteam.com
- Keller Williams - Kogok**..... 43  
www.christinekhomes.com
- Long & Foster - Koerber**..... 43  
www.tkhomes.com
- ▶ **Long & Foster - The Laura Jones Team**.. 42  
www.longandfoster.com/LauraLeeJones
- Mackintosh Realtors - Tim McGrath** .....41  
www.machomes.com
- Michael D Fox Realtors, LLC** .....41  
www.michaelfox.com/

## STABLES & TRAINING FACILITIES

- Chapman Reining** ..... 11  
chapmanreininghorses.com
- ▶ **En-Tice-Ment Stables** ..... 20  
www.enticementstables.com
- Mason Dixon Stables**..... 28
- ▶ **Paradise Stables** ..... 27  
www.paradisestables.com
- \* ▶ **Potomac Horse Center**..... 5  
www.potomachorse.com
- SummerWind Farm** ..... 3  
www.swfreininghorses.com

## TRAILERS & TRAILER SUPPLIES

- \* **Bartley Trailers** ..... 29  
www.bartleytrailers.com
- \* **Blue Ridge Trailers, LLC** ..... 26  
www.blueridgetrailers.com
- \* **Jimmy Cox Sales, Inc.**..... 52  
www.coxtrailersalesinc.com
- ▶ **Kingdom Horse Trailers** .....15  
www.kingdomhorsetrailers.com
- ▶ **Traveled Lane Trailers** ..... 11  
www.traveledlanetrailers.com

## TRAINERS

## TRANSPORTATION

## VETERINARY CLINICS & SERVICES

- Delmarva Equine Clinic** ..... 11  
www.delmarva-equine.com
- Javier Donatelli Equine Service** ..... 33

## SERVICE DIRECTORIES: PAGES 38 - 40

- ALTERNATIVE THERAPIES**
- ANIMAL CREMATION/BURIAL**
- Agape Pet Services
- APPRAISALS**
- ATTORNEYS**
- BEDDING**
- BLANKET REPAIR**
- Celebration Farm
- Horse Blanket Kare
- Horse Blanket Repair - Shim Jensen
- Sew What
- Stitch This
- BRAIDING/GROOMING**
- Wendy's Clip Art
- CARRIAGE RIDES**
- CONTRACTORS**
- \* PH Drayer
- White Horse Construction
- DENTISTS**
- Favre Equine Dentistry
- DESIGN SERVICES**
- Entice Design
- EMBROIDERY**
- EQUINE NUTRITION**
- dac
- FARM SERVICES**
- FARRIERS**
- FENCING**
- Chester County Fencing
- Esch's Fencing
- \* P.H. Drayer
- ProFence
- FINANCIAL SERVICES**
- HAY & STRAW**
- England Acres
- Preston Hay & Straw
- INSURANCE**
- Hogendorp Insurance Advisors
- LEATHER WORK/REPAIR**
- \* Outback Leather
- MASSAGE**
- PET/HORSE/FARM SITTING**
- PHOTOGRAPHY**
- Tammie J Monaco Photography
- PERSONAL SERVICES**
- Caprika Realty
- PRINTING**
- SADDLE FITTING**
- All English Tack
- Two Time Tack
- SHIPPING**
- Millenium Horse Transportation
- SIGNS**
- SPORTS PSYCHOLOGY**
- THERAPIES**
- TRAILER REPAIR**
- Blue Ridge Trailers, LLC
- C & C Industries, Inc.
- \* Cox Trailer Sales, Inc.
- Hitched Up
- VETERINARY SERVICES**
- Select Breeders Service

**Now Offering Digital Remarketing Services**  
[www.equiere.com/advertise](http://www.equiere.com/advertise)



# RIDING RIGHT®

Apparel for Horse & Rider  
Equestrian Gifts

Bucas  
FITS  
Good Fellow  
Goode Rider  
Kerrits  
Mountain Horse  
Romfh  
Fine Jewelry  
And So Much More!



Got Bucas?

Sign Up for  
Email Specials

Join us on  
for contests  
and more



1000s of Items  
on our website

800-545-7444

[www.ridingright.com](http://www.ridingright.com)

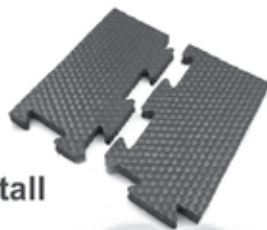
*We're Here For You*

at 142 Railroad Ave, Westminster, MD 21157

Come visit our Warehouse Outlet Shop - Open by appt. Mon - Sat, or by chance



## Emge Equine Services



Interlocking Stall  
Mat Kits

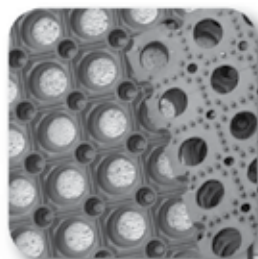
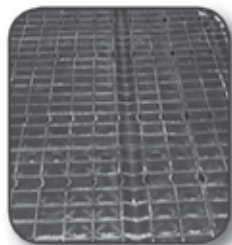
Create One Piece Floor in Minutes!

Get the most choices in rubber stall mats. Straight edge and interlocking kits. 12 lbs. to 100 lbs. Get the mats that:

- Fully revulcanized (heat processed for longevity)
- Have the highest safety and comfort design
- Delivery and installation available

Got Mud?  
We have solutions

Erosion Control Mats &  
Grid Systems



Mats for Fitness Too!

800-467-7321

[www.earthhorse.com](http://www.earthhorse.com)

Stall Doors & Grills  
Stall Ventilation Gates  
Solid Framed Fronts  
Dutch Doors  
Barn End Doors  
All Welded Construction  
Pre-Galvanized Steel  
Powder Coated Paint



Member - MHC





# Celebrating 51 Years!



*Trailer & Equipment Sales, Inc.*

**301-599-6285**

**Over 250  
New & Used  
Trailers In Stock**

**CIMARRON • W - W • SUNDOWNER**

**Delta • Hawk • Load Trail • Texas Bragg**

**2022 Models Arriving Daily • Lighter - Safer - Stronger**

**Where Champions are Bred, Raised, and Hauled**

*We wouldn't put your horse in a trailer we wouldn't put our horse in.*



**2021 Cimarron 2 + 1  
with Side Ramp**

**2021 Sundowner 2 + 1  
Warmblood Straight Load  
with Side Ramp**

## **FULL SERVICE DEALER:**

- Financing W.A.C.
- Repairs
- Parts
- Delivery is Available



## **Let Us Design Your New Custom-Built Trailer**

9409 Old Marlboro Pike • Upper Marlboro, MD 20772

301-599-6285 • Fax: 301-599-1127

**www.coxtrailersalesinc.com**

*Serving the Horse Industry Since 1970*



**We also buy Trailers & Farm Machinery**

**Call us if you are looking to sell**



K.C. Montgomery©