

Front Cover - MHAf



0620

WHAT SWITZERLAND DID FOR THE LUXURY WATCH,
**B&D BUILDERS DOES FOR THE
EQUESTRIAN FACILITY.**

B&D

BUILDERS
L.L.C.

Built Right or Not at All

Let's discuss your building vision.

717.687.0292 | BandDBuilders.com

Summerwind

TOC



Publisher: The Maryland Horse Council
https://mdhorsecouncil.org

Editor-in-Chief/Art Director: Katherine Rizzo
katherine.rizzo@equiery.com

Associate Publisher: Tracy McKenna
tracy.mckenna@equiery.com

Marketing Coordinator: Emily Nessel
emily.nessel@equiery.com

Bookkeeping: Carolyn Del Grosso
carolyn@equiery.com

Advertising Design: Peggy Ingles
Advertising Design: Kristen Barth

To submit photos and stories to
The Equiery, email editor@equiery.com.

To advertise in *The Equiery*, call
1-800-244-9580.

The Equiery is brought to you by
The Maryland Horse Council
(844) MDHORSE (844-634-6773)
mdhorsecouncil.org

President: Neil Agate
nagate@mdhorsecouncil.org

Membership Coordinator: Emily Nessel
membership@mdhorsecouncil.org

To join the Maryland Horse Council, go
to join.mdhorsecouncil.org



The Equiery is published 12 times a year (monthly), and is distributed, free, in tack shops and feed shops in & around Maryland. For more information on equestrian services in Maryland, please call 1-800-244-9580 or 410-489-7826.

The Equiery offers print & digital marketing packages to fit your needs! Call **1-800-244-9580** or **410-489-7826** to personalize your marketing package.

PRINT ADVERTISING

DISPLAY AD SPECS

All ads appear in print and online at equiery.com

AD	WIDTH X HEIGHT
1/8 page	3 ^{-11/16} x 2 ^{-3/8} inches
1/6 page	3 ^{-11/16} x 3 ^{-1/4} inches
1/4 page	3 ^{-11/16} x 4 ^{-7/8} inches
1/3 page horizontal	7 ^{-1/2} x 3 ^{-1/4} inches
1/3 page pie	3 ^{-11/16} x 6 ^{-1/2} inches
1/2 page horizontal	7 ^{-1/2} x 4 ^{-7/8} inches
1/2 page vertical	3 ^{-11/16} x 10 inches
2/3 page horizontal	7 ^{-1/2} x 6 ^{-1/2} inches
Full Page	7 ^{-1/2} x 10 inches
Full Page w/Bleed	contact for specs
Page 3 or 5	4 ^{-15/16} x 10 inches
Back Cover	7 ^{-1/2} x 10 inches
Inside Front Cover	7 ^{-1/2} x 10 inches
Inside Back Cover	7 ^{-1/2} x 10 inches
Two-Page Spread	(2) 7 ^{-1/2} x 10 inches
Center Spread	15 ^{-5/8} x 10 inches

Let us design your ad! Premium or special placement available. Please call for more information. Deadline for all advertising, unless otherwise indicated, is the 10TH of the month preceding publication.

ONLINE ADVERTISING

EQUIERY.COM BANNER

Banner ad on equiery.com with link to your website. Ad size: 300 x 127 pixels at 72 dpi

EQ E-MARKETING

Eblasts available with purchase of a display ad. *Equiery* Marketing Eblasts will use the same PDF as the print ad. Custom designs available for an additional design fee.

SOCIAL MEDIA

Talk with an *Equiery* representative today about social media advertising opportunities, all custom tailored to meet your marketing goals.

SERVICE DIRECTORY

Logo & 20 words or business card. Service directory ads are 2.375 x 1.5 inches (width x height) Book for 3, 6 & 12 month options for best buys!

CLASSIFIED ADVERTISING

Classifieds start at \$5 for 3 lines; \$4 per additional line; \$5 per bold headline. \$50 Photo Classifieds

COMING EVENTS

Free for MD events and display advertisers. Printed in the March issue each year and updated online year-round. Call about Facebook posts!

TRAINERS/INSTRUCTORS

Up to 40 word description plus photo, phone number, email address & website. Book for 3, 6 & 12 month options for best buys!

GREENER PASTURES

Special Memorial Packages! Free ad design. All Greener Pasture prices include layout & ad design. Plus, a donation will be made, in the name of your animal, to the Maryland Equine Transition Service. For information on the METS program, visit www.mets.md-horsecouncil.org.

Become a Maryland Horse Council sponsor and receive *Equiery* advertising perks!

Become a Maryland Horse Council member and receive an *Equiery* subscription!




Scan the QR Code above to join!

Helping our local farms save on operating costs is the least we can do during this difficult era.

Let's build back better.

443-603-5536 Don
571-274-0010 Cord

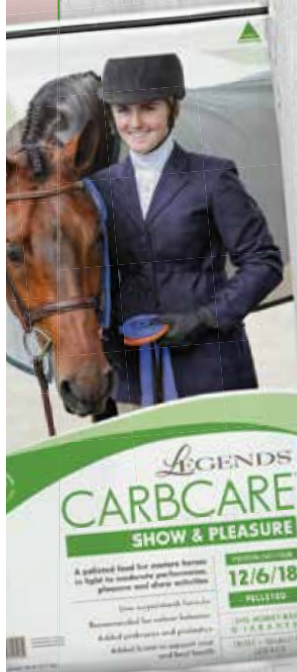
 **Aurora Energy**
www.aurora-energy.com

0720

LEGENDS CARBCARE[®]

SHOW & PLEASURE

A pelleted, fixed-ingredient formula, specifically designed for mature horses in light to moderate performance, pleasure and show activities.



VISIT US AT
LEGENDSHORSEFEED.COM



Legends[®] feeds are fortified by Kentucky Equine Research to meet your horse's individual needs. For feeding advice or to create a custom ration, visit microsteed.com/legends. Visit ker.com/legends to read the latest in equine nutrition and health and subscribe to the Equine[®] newsletter presented by Legends[®] Feeds.

©2020 Cargill, Incorporated. All rights reserved.

0920

Delmarva Equine Clinic

Practice Limited to Horses

Janice Sosnowski, DVM
Michelle Egli, DVM
Christin Landis, DVM
Kevin Beaudoin, DVM

1008 South Governors Ave.
Dover, Delaware
P. 302-735-4735 • F. 302-526-2749
www.delmarva-equine.com



Serving Your Horse's Health Care Needs

0820

Waredaca

SAWDUST, SHAVINGS, AND MANURE REMOVAL SERVICE

*"In One Trip to
Save You Time
and Money"*

Premium Pine Shavings in bulk or bales
Sawdust available year 'round

- 15 & 30 cu yd containers available for bulk delivery and manure removal service
- Serving satisfied customers in PA, MD, DE, and NJ for over 20 years
- "Innovators in Chesapeake Bay Composting initiatives for a greener earth."
- "Providing quality bedding products and service that satisfy horsemen from the pleasure rider to the Thoroughbred trainer..."

Pine View Trucking
350 Nottingham Rd.
Nottingham, PA 19362
717-529-2855
visit us on the web at
www.pineviewtrucking.com

0820



Take a H.I.N.T.!

(Horse In Need of Transition)



Dauphin

2009, 15.2h TB gelding



Hot Cocoa

2005, 16.1h OTTB mare



Chance

2007, 15.1h RM/QH gelding

Whatever you might be looking for, METS has your next partner! For more info and additional horse listings, please visit our website or email us.

www.mdequinetransition.org * info@mdequinetransition.org * 410-970-6474 * PO Box 606, Lisbon, MD 21765

0820

Publisher's Letter



Rippeon Equipment Co.

FREDERICK

9640 Liberty Road
Frederick, MD
301-898-1200

GAITHERSBURG

700 East Diamond Avenue
Gaithersburg, MD
301-670-9300

WESTMINSTER

1115 Baltimore Blvd.
Westminster, MD
410-848-5000



MX5400 TRACTOR

- 2WD & 4WD Available
- CRS, Direct Injection, Liquid Cooled Diesel Engine
- 4 Cylinder / Turbocharged Engine
- Hydrostatic Power Steering
- Live Independent, Hydraulic PTO



FINANCING AVAILABLE

See Us For All Your Kubota Needs

www.rippeonequipment.com

FULL LINE OF PARTS

PICK UP AND DELIVERY AVAILABLE

SERVICE EXCELLENCE AWARD



News 1

News 2

Javier Donatelli

EQUINE VETERINARIAN LLC

*A Mobile Equine
Veterinary Practice*



0020



Direct Digital
X-Rays,
Ultrasound,
Extracorporeal
Shock Wave Therapy,
Sport Medicine,
Dentistry

Cell - 240-676-1990
Fax - 240-489-3083

javdonatelli@hotmail.com

P.O. Box 365 • Poolesville, MD 20837

Chapman
REINING
HORSES

TRIBUTE
EQUINE NUTRITION

Congratulations to Brianna Villegas showing Conquista Annie. Champion Youth 13 and under both days at the EPRHA Firecracker Classic!!!!



Dutch Chapman 301-452-4951

Training * Showing * Sales * Lessons * Non Pro Instruction

Rising Star Farm 443-920-3701

ChapmanReiningHorses.com

0020

20 Years In Business



PROFENCE LLC

We Build To Please

- High Tensile
- Board Fence
- Woven Wire, Non Climb
- Poly cote Horse safe wire
- Horse Rail
- Deer Fence



Call: 1-877-736-8244
 Email: Brian@profence.org
 Visit : www.profence.org
 Serving: PA, MD, WV, VA, NJ, NY
 Located in Shippensburg, PA

0420

Things to do at Full Moon Farm!

• Check Website for Updates Due to COVID-19 •



September 6: FMF Farm Family Horse

Show #5



September 27: FMF September to Remember

Starter Horse Trials (Rescheduled from April 19)

November 8: FMF Fall USEA Recognized HT

Ongoing: XC Schooling - email chryzak@gmail.com

Horsemanship Program: See Website for Details

• See www.fullmoonfarm.com for more information •

Karen & Stephen Fulton • 4326 Louisville Road, Finksburg, MD 21048
410-795-8371 • www.fullmoonfarm.com • fullmoonfarmkaren@gmail.com

0920

RSD Auctions

2020 MARYLAND HUNTER PACE SERIES



Sunday, September 20, 2020
Howard County-Iron Bridge Hounds



Saturday, October 10, 2020
New Market-Middletown Valley Hounds



Sunday, October 4, 2020
Potomac Hunt Club

Saturday, October 17, 2020
Goshen Hounds

Sunday, November 15, 2020
Marlborough Hunt Club

Sunday, November 29, 2020
Carrollton Hounds



Registration opens 9:30 a.m. - HP Start Time 10 a.m.

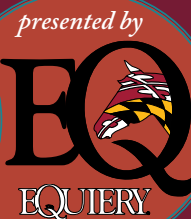
Due to the ongoing pandemic,
please check the website and facebook for updates.

www.MarylandHunterPace.com

/MDHunterPace

Or email mdhunterpace@gmail.com

0920



Bobby Lillis 1

Bobby Lillis 2



STABLEMATES INC.

4502 Old National Pike Mt Airy, MD ♦ STABLEMATESINC.COM
800-696-5560 ♦ 301-829-0333



Our Annual Fall Tent Sale!
September 18th, 19th & 20th, 2020

Follow us on Social Media   @ Stablemates Saddlery



20% OFF*
STOREWIDE!
Plus up to
80% Off

Season Ending Clothing, Summer Boots/Shoes,
Helmets, Closeout Blankets/Sheets, Show Clothes,
Closeout Boots/Shoes, Fly Products,
& Other Discounted Items!

*Sale Limited to Items In-Stock Only. Storewide discount in store only!
NO Refunds on discounted items. Select items are excluded from discount.

Breyer Attention KIDS! Breyer

We are hosting a BREYER "FUN DAY"
on Saturday, Sept. 19th from 12pm to 3pm



Kingdom Trailers

The ONLY Way to
Survive Quarantine...

Horse Shopping

The Retired Racehorse Project has made it easier than ever to shop dozens of transitioned and restarted Thoroughbred sport horse prospects - all from the comfort of your couch.

Our interactive listings let you filter to find your perfect match! View photos, videos, pedigree and more!

2 Ways to Shop!

- ➔ Shop the online catalog at tbmakeover.org
 - ➔ Sign up to receive the printed version in the mail
- tbmakeover.org/catalog

RETIREDCORNER
RACEHORSE
PROJECT

retiredracehorseproject.org



ASPCA

#MakeoverMarketplace
Virtual Marketplace

Preakness game

ON THE FARM OR IN THE WOODS

Tackle the outdoors with comfort and reliability.



RTV-X900CWL-H

- 21.6 Gross HP† 3-Cylinder Kubota Diesel Engine
- Variable Hydro Transmission (VHT-X)



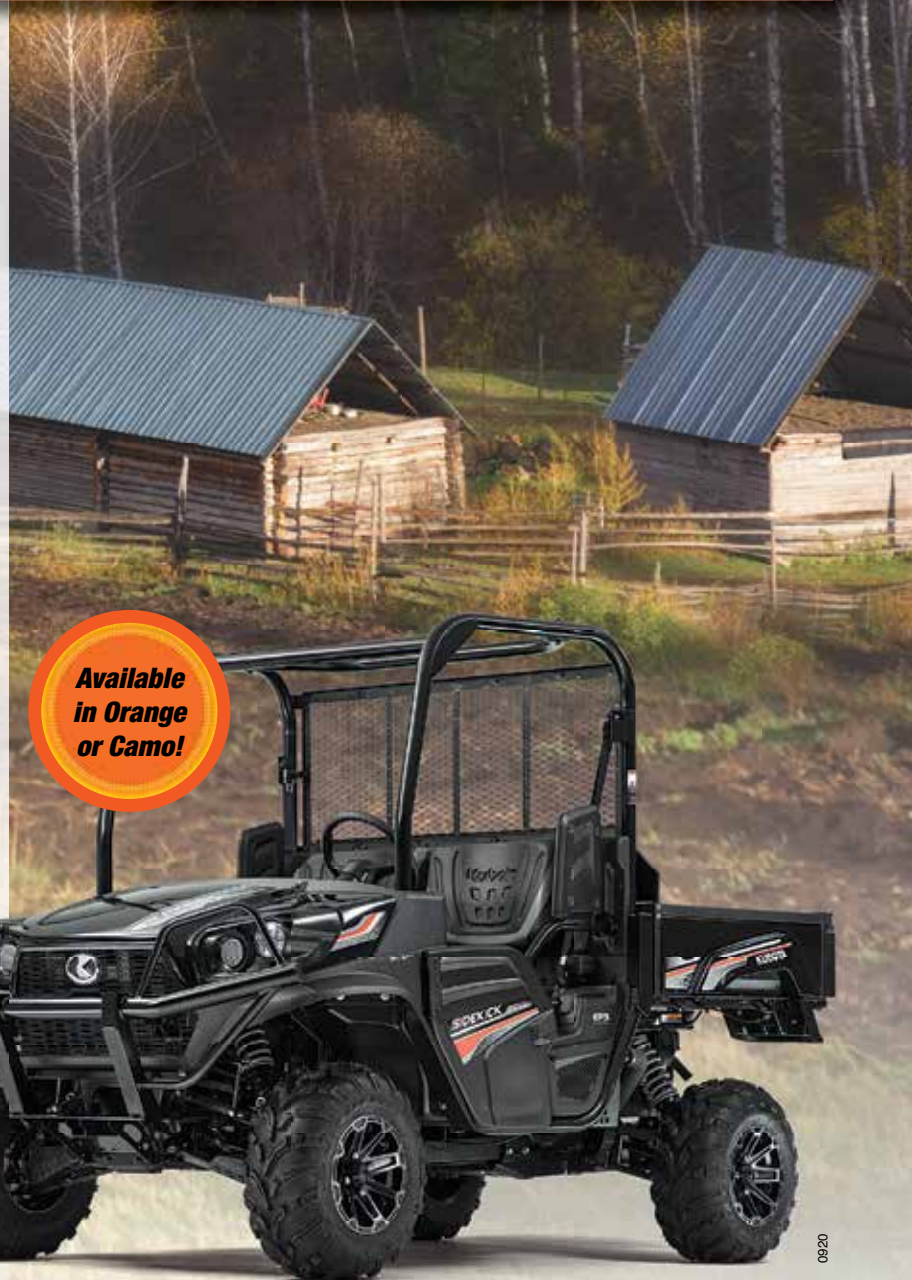
RTV-X1100CWL-H

- 24.8 Gross HP† 3-Cylinder Kubota Diesel Engine
- Premium Grand Cab AC, Heater & Defroster

SIDEKICK
Durability meets speed

RTV-XG850WL-H

- Powerful 48.3 HP† Gasoline Engine
- CVT-Plus Transmission
- Selectable Full-Time 4WD
- General Purpose, Worksite & Special Models Available



Available
in Orange
or Camo!

0920



**BURKE EQUIPMENT
COMPANY**

Turning the earth into a better place.

BurkeEquipment.com

**Ranked #5 Kubota
Commercial Dealer
in the USA!**



STORE HOURS: Mon – Fri 8–5 • Saturday: 8–Noon (March–October)

Newark, DE
2063 Pulaski Hwy
Route 40
302.365.6000

Felton, DE
54 Andrews Lake Rd
Route 13
302.284.0123

Delmar, DE
11196 E. Snake Rd
Route 13
302.248.7070



†For complete warranty, safety and product information, consult your local Kubota dealer and the product operator's manual. Power (HP/KW) and other specifications are based on various standards or recommended practices. KCDA-14-143874-10

COVID racing 1

COVID racing 2

FREE Tax-Saving Review for Equestrians! CPA Helps Fellow Horse Lovers File Their Taxes Worry-Free When Dealing With The IRS

My staff and I are adult amateurs who compete in various disciplines. When not competing, we are helping assist other people with tax filing, planning and other financial situations.

I have been an expert tax professional for over 15 years. Currently, I'm looking to accept a few more like-minded clients who share a similar passion for horses.

If you are looking for a CPA or financial professional who understands your unique situation, feel free to contact me at my office.

*Mention my "horse ad" and I will personally review your previous three years of tax returns at no charge as a fellow equestrian courtesy. (\$600 Value)

If you are not satisfied with my ability to help you and your tax situation for any reason, just say so and I'll be happy to return all of your documents and buy you lunch for your troubles ... guaranteed. I want you to have zero risk in choosing my tax firm to help you with Uncle Sam.



Jennifer Allen, CPA

(301) 524-6335

www.jallencpa.com



COVID racing 3

Wagner Equine

MAAC Rolloffs
&
Equine Services

Manure Removal
(Roll-Off or Pile)
Bedding (Sawdust)

Call now to schedule your
fall pasture overseeding!

Adamstown, MD

301-607-4381

Serving

Montgomery, Frederick, Howard, Carroll,
Prince George's, Anne Arundel & Washington
Counties and Loudoun County VA

Visit us on the web at www.midatlanticagconsulting.com

Attention Trail Riders, Eventers, Pony Clubbers, Foxhunters!

*Are you bummed about all the COVID cancelations?
Need to get your cross-country fix, but want it with COVID precautions?*



The Pleasant Prospect Farm Cross Country Team/Pairs Challenge September 2 - 14th

The farm is **ALL YOURS** for 1.5 hours!
Gather your teammates (2-4 people) for a fun event
over our 3-4 mile cross-country course!

DIVISIONS

1. **LOW** - 2.6 (all jumps have a go around)
2. **HIGH** - 3.3'
3. **FLAT** (woods, hills, streams, etc)

- All registrations are done online and via dropbox - no contact with anyone at the property!
- Can cross-enter classes and ride multiple days - no limit to entries.

- Course Maps, PPF Waiver, & a Time Report Card will be emailed to you at least 24 hours prior to your ride time.
- A Time Card will be included in your registration packet. Keep track of your start and finish times, and deposit the Time Card in the orange drop box in the secretary's stand. Times will be compared to a pre-set optimum time. The team closest to the optimum time will win.

**Attire: Protective headgear and riding boots or chaps/paddock boots;
juniors must have safety harness on helmet and safety vests are recommended.
Polos, button-downs and britches preferred but not required.**

PRIZES

PONY CLUBS: \$100 Donation to your Club to the winning pair/team
in any division (provided as least 2 pony club teams are entered)

TROPHIES to the winning team of the 3.3 division

RIBBONS (1st-6th Place) for each division
(ribbons available for pick up at the conclusion of the multi-day event)

0920

To register, visit : www.pleasantprospectfarm.com
and follow us on Facebook



Loch Moy

BASCULE FARM LLC

BEGINNER PRIVATE LESSONS AVAILABLE

with ELIZA SANNICOLAS



We have some amazing
lesson horses (professors)
and can easily
socially distance!

Get your afternoon lessons
scheduled by calling
301-972-8943
and patch into Eliza directly!



Field & Full Boarding Spaces Available

20800 Whites Ferry Road, Poolesville, MD 20837 • 301-972-8943 • www.basculefarm.com

0920xe

Classifieds

Now Accepting Boarders



- 65 Acres • 12 X 12 Stalls • 1 Barn Aisle is Heated
- Hacking Areas • Outdoor Arena • Round Pen
- Individual Paddocks w/Run-in Sheds & Auto Water
- Large, Lush Pastures w/Run-in Sheds & Auto Water
- Lounge • Bathroom & Shower
- 2 Hot & Cold Wash Stalls

\$350 STALL BOARD



\$300 FIELD BOARD



Mason Dixon Stables

618 Humbert Schoolhouse Road, Westminster, MD
 Convenient to Littlestown, Hanover & Taneytown
717-725-9834

0320

BARTLEY TRAILERS

10% Off
 Service with this ad

Servicing all types of Horse Trailers
 Sales • Repairs • Safety Inspections • Parts

15095 Frederick Road
Woodbine, MD 21797
301-774-3332



Authorized
 Homesteader
 Stallion Dealer

www.bartleytrailers.com

16613 New Hampshire Avenue
Silver Spring, MD 20905

0320

Autumn at PHC

Contact Us About Special Opportunities for Riding

(We follow best practices for the prevention of COVID-19, including physical distancing.)

Fall Lessons!

August 31 - November 22

Call for availability

Where
DC/MD/VA
Learn to Ride!

Ride Experienced
School Horses in a
Safety-Conscious Environment

Horse Ownership Not Required

No Pressure for Riders to Compete

Convenient Location

Legendary Facilities

Professional Staff



14211 Quince Orchard Road
North Potomac, MD 20878
301-208-0200
www.PotomacHorse.com

A Public Facility Leased from the Maryland-National Capital Park and Planning Commission

0920

Classifieds

- ❖ 240 acres in So. Frederick County
- ❖ Field and Stall Board
- ❖ Two Outdoor Arenas & Round Pen
- ❖ Schooling Jumps, Cavaletti
- ❖ Groomed Trails, Water Crossings
- ❖ Cross Country Course (Maiden/Beginner)
- ❖ Miles of Trails for Endurance Riders!

Quality Hay Grown on Our Farm

Reichs Ford Farm

TRAIL MEMBERSHIP
AVAILABLE

9611 Reichs Ford Rd
Ijamsville, Maryland
240-674-4825
reichsfordfarm.com



0920

Classifieds

WB LIGHTNING RODS **LIGHTNING ROD SYSTEMS**
 Installed and Repaired

We protect Houses, Barns, Stables, Pole Barns and Trees.
 U.L. Listed Materials
 N.F.P.A. Member

Family Owned Since 1950
 Serving PA, DE, MD, NJ, & NY
 William Burden 800-557-9037
www.wblightningrods.com

Like us on Facebook

HCIBH

Come board in Paradise




Maryland's Premier Pleasure Barn

Where being with your horse ... is always a pleasure.

- Light-filled 80 x 120 Indoor Arena
- 100 x 200 Outdoor Arena
- Jumps & Training Obstacles Available
- 300+ acres of Trails
- Climate Controlled Observation Room
- Climate Controlled Tack Rooms w/ Private Lockers
- Hot Water Wash Stalls
- Stall or Field Board
- Lay-up Paddocks Available
- Specialty Individualized Horse Care
- Monthly Fun Days and Lessons with Joe London
- Outside Trainers Welcome
- Drama Strictly Prohibited
- Convenient Location

**Rick Shaffer
 Trail Horse
 Testing Program
 Clinic & Evaluation
 October 26 & 27**

Discover Peace in Paradise
301-865-4800
 6250 Detrick Rd. • Mount Airy, MD 21771
paradisestables.com • paradisestablesllc@yahoo.com




PARADISE STABLES

SATURDAY,
OCTOBER 3RD 2020



**BENEFITING GREAT AND SMALL
THERAPEUTIC RIDING PROGRAM**

Masks Required for Entry
Gates Open 12PM | First Match Begins at 2PM
Congressional Polo Club
14660 Hughes Rd, Poolesville, MD 20837
FOR TICKET SALES, VISIT:
PONYUPPOLO.EVENTBRITE.COM

Classifieds

CELEBRATION FARM

Where your horse matters

- 38 acres for stress-free, happy horses
- Knowledgeable staff that listens to you and your horse
- Small Group or Private turnout
- Well-groomed 66 x 200 indoor with European footing (attached to the barn)
- Well-lit & fenced, oversized outdoor arena
- Clean facility with slip-free aisles
- Heated tackrooms, oversized wash stall, washer/dryer and more
- Open barn - Use your trainer or ours!

Come and board with us today!



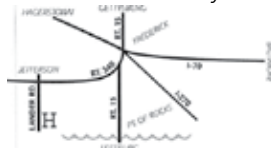
CELEBRATION FARM, LLC
9961 Green Valley Road
Union Bridge, MD 21791
443-745-0207
www.celebration-farm.com
jgeyer@ix.netcom.com



Capital Challenge

BLUE RIDGE TRAILERS LLC

Alice & Pete Drayer



SALES • SERVICE

www.blueridgetrailers.com
JEFFERSON, MARYLAND

Phone: 301-473-1234
Fax: 301-473-4424

ESTABLISHED SINCE 2000



**AUTHORIZED DEALER FOR
GORE TRAILER MFG**

Horse & Stock GN/BP Models Available

Trailer Repairs & Hitch Installation on All Makes & Models

4111 Lander Road
Jefferson, MD 21755
(5 miles west of Frederick, MD)

www.blueridgetrailers.com

dodgendaja@aol.com • 301-473-1234

0320

Classifieds



Established Since 1985



FENCING: Horse & Livestock

Wood Board • Horse "No Climb" • Wire Mesh
American Wire • Hi-Tensile • Vinyl Tape

BUILDINGS: Custom Designed

Renovations & Repairs • Post and Frame
Horse & Livestock Barns • Arenas
Equipment Storage & Shops • Garages

Materials Available

Jefferson, MD (5 miles from Frederick, MD)

www.phdrayerco.com • 301-473-4466

BLUE RIDGE TRAILERS, LLC

Sales and Service (on any Make or Model)
Dealer for GORE TRAILER mfg.

www.blueridgetrailers.com • 301-473-1234

0320



Potomac Valley Dressage Association

Promoting education in the art & sport of dressage since 1964

Year end award requirements reduced!

Intro - First Level: 4 scores

Second & up: 3 scores

Musical Freestyle & Pas de Deux: 2 scores

Volunteer hours (4) or \$50 sponsorship

Scores from 2019 & 2020 November shows will count!

Upcoming Schooling Shows:

9/06 • Woodstock • Beallsville, MD

9/13 • Oak Ridge • Hughesville, MD

9/20 • Schooley Mill Park - Alzheimer's Benefit • Highland, MD

10/11 • Schooley Mill Park Costume Show • Highland, MD

Upcoming Licensed Show:

11/7-8 • PVDA Fall Show • Upper Marlboro, MD

Find a chapter near you! View our full calendar online.
See what PVDA can offer you at www.pvda.org

09/20

Now Accepting Show Team Boarders!



Stall & Field Boarding,
Lessons, Camp.

Hunter Jumper
Lessons & Sales.

Indoor, Outdoor,
Trails, Show Teams.

Deana Tice, Brittany Tice and Hailey Johnson

Harwood, MD • 410-798-4980
www.enticementstables.com

09/20

FRESH FEED Guaranteed!



Several feeds in stock.
Feed Manufactured Daily

We want to earn
your business with
service, support,
and satisfaction.

Pickup & Delivery
Available Through
Us or Our Dealers



09/20

FARMERS COOPERATIVE ASSOCIATION, INC.

820 E. South Street, Frederick, MD 21701

301-663-3113

www.FarmersCoop.com



Sept Crossword puzzle

DAMASCUS EQUINE ASSOCIATES



We are excited to announce the addition of Dr. Alex Yerkes to our practice!

Dr. Alexandra Yerkes grew up in Virginia Beach, VA, and was bitten by the horse bug in middle school when she decided she had to become an equine veterinarian. She rode hunter/jumpers through high school and expanded to field and cross country at Sweet Briar College where she majored in Biology and English and minored in Chemistry. After graduation, she attended Virginia-Maryland College of Veterinary Medicine with a focus on Equine Medicine. While in veterinary school, Alex was the community outreach chair for the student chapter of AAEP. Her special interests in veterinary medicine include reproductive medicine and neonatal health and sports rehabilitation. In her free time, Alex enjoys riding and training her two dogs, Gemma Belle and Kitt, and containing her ferret, Mushu. Alex is looking forward to living in Maryland and being a part of Erskine & Associates as well as Damascus Equine Associates!



Damascus Equine Associates offers 24/7 emergency coverage to clients, digital radiography, digital ultrasound, shock wave, IRAP, PRP and an outpatient clinic at our office. Our goal is to provide compassionate care to your horse.

Roger Scullin, VMD 301-253-3992 Megan Snyder, VMD 301-502-1762
James Lewis, DVM LAc 301-502-6916 Peter Radue, DVM & Edward Radue, DVM 301-829-2170
Michael Erskine, DVM DABVP, Suzanne Welker, DVM & Alex Yerkes, DVM 301-829-4977

www.DamascusEquine.com

lessons & boarding

lessons & boarding

lessons & boarding

HORSE SUPPORT, LLC

Bob Ciri • John & Josh Lyons Certified Trainer

WOULD YOUR HORSE BE PERFECT IF ONLY...?

He would listen?

He were more physically capable?

He didn't anticipate your commands?

DO YOU JUST NEED "A BIT OF HELP" TO MAKE HIM PERFECT?

Now offering Western Dressage Instruction

301-928-2828 • www.cooperativehorsemanship.com



HCIBH 1/4

1/8 open space

R & D Cross

ALTERNATIVE THERAPIES



P.E.M.F. therapy
 Heal faster with drug free pain relief!
 Speed healing from injuries including:

- wounds
- inflammation
- muscles
- tendons
- navicular
- hoof abscess
- bones
- ligaments

Text 240-793-3578
www.powerthroughyou.com
wendy@powerthroughyou.com

End Stall Rest sooner!

0320

BLANKET REPAIR

HORSE BLANKET KARE

- See Classified in Saddles/Tack for Blanket & Tack Liquidation •

Wash, Repair, Waterproofing & Consignments



Kathy & Karrie Recknor
 (301) 330-5551
 14711 Seneca Road
 Darnestown, MD 20874

ADDITIONAL FREDERICK LOCATION

0320

CONTRACTORS



JRM & SONS EXCAVATING, LLC.

Specializing in indoor & outdoor arenas

Ponds • Roads & Driveways • Trails Clearing & Grading • Bobcat Services Pads for Run-ins & Barns

see photos at www.jbmexcavating.com
 bobby@jbmexcavating.com • 443-532-4035

30 Years Experience Licensed & Insured

Anne Arundel, Charles, Calvert & St. Mary's Counties

0320

ANIMAL CREMATION/BURIAL



Agape pet services

TRUSTWORTHY EQUINE CREMATION WITH TRANSPORTATION

301-432-0431 www.agapepetservices.com

- Pick up at your Location
- Available 24-7
- Respectful & Gentle Handling
- Beautiful Selection of Urns & Keepsakes

Easing the loss of your horse with integrity & compassion

0320

Outback Equine Blanket Cleaning

BLANKETS REPAIRED WASH & WATERPROOF

Pick Up/Delivery Available

- Sheets • Pads
- Coolers • Wraps



Laurel Drop-Off Location

Deanna Sargent
 Jim Pickett Road
 Sykesville, MD 21784 **410-552-8494**
www.mdoutbackleather.com

0320



P.H. DRAYER CO. INC.

BUILDINGS • BARNS • FENCING
 301-473-4466
 FAX: 301-473-4424

www.phdrayerco.com Jefferson, Maryland 21755

0320

APPRAISALS

R.L. Graham Appraisal Service

EQUINE APPRAISERS

ALL BREEDS & DISCIPLINES
 SPECIALIZING IN THOROUGHBREDS




Certified member American Society of Equine Appraisers
 2960 Duvall Road • Woodbine, MD 21797
 410-615-9704
www.rlgrahamstable.com • Robinht@aol.com

0320



SEW WHAT

HORSE BLANKET WASHING, WATERPROOFING & REPAIR

Barb Carr **410-848-3988**

3380 Salem Bottom Road sewwhatblankets@verizon.net
 Westminster, MD 21157 www.sewwhatblankets.com

0320

Quality Custom Buildings



PRECISE BUILDINGS

717.768.3200 • www.PreciseBuildings.com

0320

ARTISTS

JUMP-START YOUR BUSINESS

Affordable Web Design
 Logos • Graphics • Photos

Reliable & Experienced
ENTICE DESIGN, LLC

443.798.0709
www.entice-design.com



0320

BRAIDING/GROOMING

Wendy's Clip Art

Body Clipping & Mane Pulling

Over 30 Years Experience
 All styles - adapted for owners'/horses' needs

At Your Barn & Convenience
 Wendy Emblin
 410-984-2998 (cell) • 410-489-7031

0320

DENTISTS

FAVRE EQUINE DENTISTRY

All Breeds - All Levels - All Disciplines

Bruno J. Favre, EqDT

Cell (410) 935-1478
 Home (410) 867-0605
brunofavre@verizon.net

*Certified by VA Board of Veterinary Medicine
 Serving Equine Professionals on the East Coast and Abroad*

0320

ATTORNEYS

BEDDING

BLANKET REPAIR



CELEBRATION Farm

- 👉 Horse Blanket Washing & Repair
- 👉 Quick Turn-Around
- 👉 Monogramming
- 👉 Space Bag Storage
- 👉 Delivery
- 👉 Free Pickup of 20 or more

443-745-0207

9961 Green Valley Road, Union Bridge, MD 21791
www.celebration-farm.com

0320

CARRIAGE RIDES

CONTRACTORS

FARM AND EQUINE SERVICES

Quality Construction - Customized Structures
 Horse Amenities - Fencing - Expert Solutions



240-818-8595 FarmAndEquine.com

0320

EQUINE NUTRITIONISTS

FARM SERVICES

FARRIERS

BARROWS FARRIER SERVICES



Mobile Phone 443-334-6098
www.barrowsfarrierservices.com

0320

FARRIERS



Salzmann Farrier Services
Environmentally Friendly Horseshoeing

Andy Salzmann 913-548-3388
Farrier
andrewsalzmann@gmail.com

FENCING



PROFENCE LLC
We Build to Please

High Tensile • Board Fence • Woven Wire, Non-Climb
• Poly-cote Horse-safe wire • Horse Rail • Deer Fence

877-736-8244

Serving PA, MD, WV, VA, NJ, NY
sales@ProFence.org • www.ProFence.org

INSURANCE



Hogendorp Insurance Advisors

Serving: Maryland, Pennsylvania, Virginia & West Virginia
www.HogendorpInsurance.com
Email: info@hogendorpinsurance.com
Office: 443-639-5440

Farm * Auto * Home * Life *
Business * Equine

INSURANCE

Timothy R. Streaker

Streaker Horseshoeing

Established 1988
American Farriers Association
Certified Farrier #5347

410-241-9480

FINANCIAL SERVICES

Retirement: Ready or not. Ready is better.



Dawn Edgerton-Cameron
Financial Advisor

550-D Ritchie Highway
Severna Park, MD 21146
410-544-1191

Edward Jones
MAKING SENSE OF INVESTING
edwardjones.com

LEATHER WORK/REPAIR

OUTBACK LEATHER

Custom Leather Work

Boots & Shoes repaired
Saddles Custom Fitted
Blankets Cleaned & Repaired
Chaps & Saddle Bags for Horse & Motorcycle
CUSTOM MADE, ALTERED, REPAIRED

Store Hours **Ronald Sargent**
10-5 T-F 309 Main St. Laurel, Md. 301-604-2211
10-2 Sat www.mdoutbackleather.com

FENCING

Chester County Fencing Provides Quality Horse Fencing!

Vinyl Horse Rail • Post & Board • Centaur • Mesh Wire
Split Rail • Slip Board • Run-In Sheds

Call for a Free Consultation!
610-273-3300

MASSAGE

PET/HORSE/FARM SITTING

PHOTOGRAPHY

SADDLE FITTING



EQUITABLE ADVISORS

William R. Norton III
Financial Professional

T: (410) 309-3675 F: (410) 312-3157
william.norton@equitable.com

6200 Old Dobbin Lane, Suite 100
Columbia, MD 21045

Equitable Advisors is the brand name of
AMA Advisors, LLC (Member FINRA, SIPC)

HAY & STRAW



Esch's Fencing
Quality Products & Workmanship Since 1987

Split Rail, Post & Board,
Slip Board, Woven Wire,
Treated & Locust Post,
Custom Wood & Steel Gates
P.V.C. & Aluminum Fence
Pool Enclosures
and More!

Call today!
610-857-1676

Quality Hay For Sale

**Orchard Grass • Timothy
Alfalfa & Mixes**

**Square & Round Bales
Delivery Available
Local and Long Distance**

Zac Virtz
410-259-5853
zcv0794@yahoo.com

HCS, USA Saddlery Fittings & Sales
Qualified Saddle Fitters
of
The Society of Master Saddlers



Appointment or Inquiries (717) 294-6757
info@hastilowusa.com

Multi-Brand Fittings, Repair
Services, Sales, Consignments



P.H. DRAYER CO. INC.
BUILDINGS • BARN • FENCING
301-473-4466
FAX: 301-473-4424

www.phdrayerco.com Jefferson, Maryland 21755

England Acres - Hay and Straw

Round & Square Bales • Mixed Grass
Timothy • Alfalfa/Orchard Grass Mix • Straw

ON TIME DELIVERY

Also: Skid Loader Work & Pasture
Management and Renovations
Frederick & Surrounding Counties

JEFF ENGLAND | 240-674-2030 Cell
301-865-3146 Home



Gina Perilla

Master Saddlers
Association Certified
Saddle-Fitter

443.386.5396

Saddle Fittings
Clinics
Consultations
On Site Adjustments
New and Used Saddle Sales

GinaPerilla@verizon.net
www.GinaPerilla.com

TWO TIME TACK



When your horse wants to wear a saddle that fits

SADDLE FIT CONSULTATION

301-739-6615 twoxtack@verizon.net

SHIPPING

MILLENNIUM HORSE TRANSPORTATION

- Local & Long Distance
- Over 30 Years of Experience
- Emergency Services Available

Donna Matthews
(443) 309-1975
dmatthews0111@gmail.com



0320

TRAILER REPAIR

C & C Manufacturing, Inc.

Est. in 1974

Trusted service for those who tow

8255 Beechcraft Ave. • Gaithersburg, MD 20879
(Near the Montgomery Co. Airpark)

301-921-0014 • cctrailer.com

Mon. - Fri.: 8am - 6pm • Sat.: 9am - 1pm
Complete Trailer Maintenance, Service & Repairs
Painting & Modifications • Trailer Floor Replacement
Sales, Installation & Fabrication of Standard & Custom Hitches
Expert Trailer & Tow Vehicle Wiring & Brake Systems
Extensive In-Stock Parts Department with Standard & Hard-to-find Items
Authorized Maryland Inspection Station

0420

TRAILER REPAIR

Over 25 Years Experience on Flatbeds - Equine - Landscape & Livestock Trailers



Axles - Brakes - Bearings - Floors - Couplers - Wiring - Welding
Synthetic Products Used On All Trailer Service Work

Thomas Frazier (Tommy) 240-457-1825
Mt. Airy, Maryland

0320

TRAILER REPAIR

SALES • SERVICE

Alice & Pete Drayer



AUTHORIZED TRAILER DEALER
FOR GORE TRAILER MFG. & CALICO TRAILER MFG.

www.blueridgetrailers.com
JEFFERSON, MARYLAND

PHONE 301-473-1234
FAX 301-473-4424

0320



Trailer and Equipment Sales, Inc.

Complete Line of Trailer Parts and Trailer Accessories

9409 Old Marlboro Pike Upper Marlboro, MD 20772

301-599-6285

www.coxtrailersalesinc.com

0320

VETERINARY SERVICES

0320

We're the low-key dealer with the high quality trailers.

Traveled Lane Trailers

When we quote a Calico price, it's for a ready-to-use trailer.

No pricing games!



CALICO TRAILERS
GUTHRIE, ARKANSAS



Portax LK - Extra length for more storage!

Premium Aluminum Trailers



Interlocking Aluminum-Tube Walls

You don't need a truck to tow a Böckmann!



Böckmann Ramp/Door Ramp and Step-Up loading in one trailer!

Traveled Lane Trailers, Inc.
Centreville, Maryland

410-556-6850

www.traveledlanetrailers.com

0320

OA Jousting



Buy Your
MistyMints Here!!!

Now Online

“Treat Your Horse To Only The Best!!!”



♥ Online Special ♥
Buy 5 And Get 1 More Free!!

MistyMints.org

Dallimist Treat Company, LLC Frederick Maryland

0720

Manure Removal & Roll-Off Services



Selling Hay & Straw
Round & Square Bales

Offering 10, 15 & 30 Yard Cans
For Service Call
Cory • 301-300-8335 or Bruce • 301-370-7111

0320

eXp - Diamond

**full page open
space**



TURNKEY PROFESSIONAL TRAINING FACILITY IN HAGERSTOWN OFFERED FOR SALE!

This beautiful 30 acre farm is in pristine condition and is ready for an ambitious training, breeding, or boarding business to take the reins. There are 29 stalls total with 14 stalls in the gorgeous center aisle barn with custom yoke stall fronts, two tack rooms, a wash stall with hot/cold water, and a large feed room. Additionally, there is an 80 x 200 state of the art indoor and an all weather outdoor with lights both with custom blended rubber / blue stone footing.

The home is beautifully updated and includes a gourmet kitchen, four large bedrooms, two updated full baths, a home office, and even an in-ground swimming pool perfect for cooling off after a long day of riding.

Priced very reasonably at \$850,000. Please contact Melisa for an appointment!

0720



I have buyers looking for farms in Montgomery & Howard Counties.

MELISA KLEM

Cell: 301.602.8117
Office: 866.424.2601
MKlem@HaganRealty.com



L/F Christies

Real Estate classifieds

Mackintosh - McGrath

**1/3 pie open
space**



Times are **TIGHT**
But you **CAN** save money.

It is **TIME** to reassess
your insurance policies.

- Are you paying for too much insurance? Too little?
- Do you need to raise your deductibles to lower your annual costs?
- Is there some coverage you can drop?
- Is there other coverage that you can't afford NOT to have?

*You have the time - no excuses.
Call Today.*

Kitsi Christmas
Christmas Insurance
A Rated Companies
Fax 1-800-470-2423
301-509-4552
www.Christmasinsuranceagency.com
kitsi@christmasinsuranceagency.com

Offering a Full Line of Insurance Products

- Liability (including Care, Custody & Control, Boarding, Breeding, Umbrella, Racing, Training, Instruction)
- Workers Compensation (Coming Soon)
- Property (farms, residents, barns, machinery, tools, tack, automobile)
- Equine (Full Mortality • Major Medical • Loss of Use)

Give your business a Christmas gift - call Kitsi today.

914911-180318

L/F Jones

Reg OA 1

Reg OA 2

1/6 open space

Country Comfort
1/6



Gentle Giants Draft Horse Rescue

Alfredo: 2008 12 hand Welsh type gelding. Nice! Walk/trot/canter sound and beginner safe.

adoptions@gentlegiantsdrafthorsescue.org;
www.gentlegiantsdrafthorsescue.org



Gentle Giants Draft Horse Rescue

Sweets: 2009 16 hand Sugar Bush Draft Mare. Great herd companion. Not rideable.

adoptions@gentlegiantsdrafthorsescue.org;
www.gentlegiantsdrafthorsescue.org



Days End Farm Horse Rescue

Voodoo Vision: 2018, 9.0hh, Miniature horse gelding. Adorable companion or driving prospect, experience with groundwork and obstacles.

301-854-5037; Adopt@defhr.org; www.defhr.org



Freedom Hill Horse Rescue

Delilah: QH mare, born '97, 15.2h, cremello w/poss champagne gene, green/blue eyes. Rounded ears due to frostbite. Western exp. Best suited for light riding. Loves children. Can be boss mare. Stands for vet, farrier. Does well trailering.

freedom.hill.org@gmail.com;
www.freedomhillhorsescue.com



Lifeline Horse Rescue & Rehabilitation, Inc.

Toosmartsweetheart: super sweet 16h chest '02 OTTB mare. Trained English & Western, has trail experience. Bomb-proof solid citizen, safe for kids & beginners. Beautiful girl would make a perfect husband's horse. Req some maintenance.

301-318-1686; Leila@lifelinehorsescue.org;
www.lifelinehorsescue.org



Safe Haven Equine Warriors

SHEW'S latest rescue, saved from slaughter. This pretty girl will be available for adoption in a few months!

410-442-5177; safehavenequinewarriors@gmail.com;
www.safehavenequinewarriors.com



Little Longears Miniature Donkey Rescue

Donkeys, donkeys everywhere! Miniatures, Standards & even Mammoths! Donkeys are sweet, social & super smart! Come see for yourself. We have lots of donkeys ready for adoption.

301-908-7351; info@littlongears.org;
www.littlongears.org



MidAtlantic Horse Rescue

Mr. J: ch, g., 16h, 2010. 2020 RRP Makeover Eligible. Sound, light balanced mover. Adoption fee \$1800. Other nice TBs available.

302-376-7297; Bev@MidAtlanticHorseRescue.org;
www.MidAtlanticHorseRescue.org



Maryland Horse Rescue

Ginger: 1998, 15.2hh Paint mare. Gorgeous girl! Very gentle and laid back, gets along in mixed herd. Available as a companion with no adoption fee through our unique foster program. Ask us about the benefits of fostering!

301-992-0284; mdhorsescue@gmail.com;
www.mdhorsescue.net



Middle Ridge Farm & Rescue

Liberty: 4yo grade mare. Approximately 14h and super stocky. Eager to learn and friendly. Ready to start under saddle w/an experienced adopter. \$600 adoption fee

301-305-6440; info@middleridgefarm.com;
www.MiddleRidgeAnimalRescue.com



Standardbred Retirement Foundation

Novel's Finale: Gorgeous 15yo STB Mare w/equally amazing movement! 16h, awesome build, great attitude. Rode like an old pro w/young volunteer. Will walk, pace, and canter. She is working hard on leads & trot. Ability to go far!

609-738-3255; SRFadoption@gmail.com;
www.Adoptahorse.org



The Foxxie G Foundation

Saltwater Taffy: 15yo, 16H TB mare. She loves being with people and is as sweet as can be. Sound and smart, she will be perfect for anyone who wants a nice horse for trail riding and low level showing. Adoption fee \$500.

301-667-2553; whinnywhiskers@thefoxxiegfoundation.org;
www.thefoxxiegfoundation.org



GAIT, INC.

Paris: 12yo, 15.1h TN Walking Horse mare. Well broke & ready to hit the trail w/confident novice or above rider. Sensible, well gaited and fun to ride, more whoa than go. Adoption fee is \$1200, located in Frederick, MD. Others available.

240-720-4545; www.gaitrrr.org



CONGRATULATIONS

Congratulations to Maverick who was recently adopted by the Givens family!

Safe Haven Equine Warriors

410-442-5177; safehavenequinewarriors@gmail.com;
www.safehavenequinewarriors.com

Life

TRAINERS/JUDGES/INSTRUCTORS



Heather Achen

USEF "r" Judge; MHSA "R" Judge Hunter/ Eq. and Jumpers. VHSA and IEA approved Judge. 30+ yrs Teaching. Judging and Riding Clinics Available

240-888-6945; piaffe99@comcast.net



JoAnn Robertson

Licensed "R" USEF /MHSA Judge: Hunters - Ponies - Equitation - Hunter Breeding • Available for Clinics. 40+ Years Experience. Judging, Teaching, Boarding, Training. Also Available for Lessons at Aspiring Heights Farm, Westminster, MD

410-848-1431, aspiringheightsfarm@gmail.com; www.aspiringheightsfarm.com



Yvonne Atwood

British Horse Society Intermediate Instructor and USDF Bronze & Silver medalist. Traveling to you teaching classical dressage, rider biomechanics and correct groundwork. Let me help you start/re-train/improve your horse while also teaching you "how and why" and "feel and body awareness". For all levels.

240-529-8707; yaatwood@hotmail.com; www.mindfuldressage.com



Jane Seigler

USDF Silver Medalist. Dressage instruction. Beginner to 4th Level, focused on helping horse and rider find confidence in their balance, discover better relaxation, and maximize athletic performance. Extensive training with Walter Zettl, Linda Zang and Ulf Wiltfang.

301-774-3756; seigler,jane@gmail.com



Leslie Deering

Event - Show - Fox Hunt. Classically trained by Olympians, making it happen in the real world. Specializing in building confidence using sports psychology principles. Leslie's trained Pony Club As, upper level eventers, hunter/jumpers plus pleasure riders seeking safe fun. 30 yrs with numerous references on site. Lic. insured. Will travel

301-706-4642; www.GlendonStablesLLC.com



Louise "Lou" Bowling Steinfort

USEF "r" and MHSA "R" licensed judge. Hunters, Equitation, Jumpers, Pleasure. Sidesaddle instruction. Located in central Howard County, MD.

301-704-3660; loulouridesaside@gmail.com



Katie Phalen

Leadline & recreational riding, basic dressage & jumping; trailer training & groundwork for youngsters; competition coaching available. Solid foundation in equine behavior & rider biomechanics for effective communication & partnership with the horse. Clarksville; will travel.

240-461-2145; crossfoxfarm@verizon.net

**Interested in joining
the directory for
Trainers, Judges & Instructors ?**

→ CALL 410-489-7826 TODAY! ←

Greener Pastures

Honor the memory of your beloved
animal with a Greener Pastures
Roll Call or Memorial Ad



Contact Tracy • 410-802-4219
tracy@equiery.com

Roll Call Sponsored by



www.agapepetservices.com

Roll Call

GL LOUJACK "LOU"

Arabian Gelding

4/23/1984 - 7/22/2020

Bonnie & John Kessler

Ad Index

RIDING RIGHT®

Apparel for Horse & Rider
Equestrian Gifts

Bucas
FITS
Good Fellow
Goode Rider
Kerrits
Mountain Horse
Romfh
Fine Jewelry
And So Much More!



Got Bucas?

Sign Up for
Email Specials

Join us on
for contests
and more



800-545-7444

www.ridingright.com



1000s of Items
on our website



0920

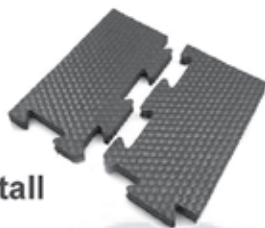
We're Here For You

at 142 Railroad Ave, Westminster, MD 21157

Come visit our Warehouse Outlet Shop - Open by appt. Mon - Sat, or by chance



Emge Equine Services



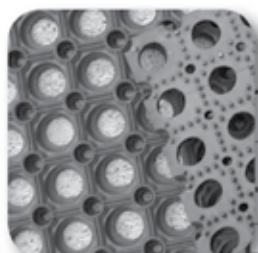
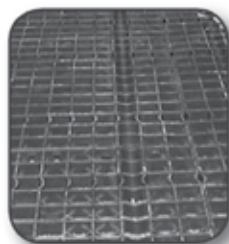
Interlocking Stall
Mat Kits

Create One Piece Floor in Minutes!

Get the most choices in rubber stall mats. Straight edge and interlocking kits. 12 lbs. to 100 lbs. Get the mats that:

- Fully revulcanized (heat processed for longevity)
- Have the highest safety and comfort design
- Delivery and installation available

Got Mud?
We have solutions
Erosion Control Mats &
Grid Systems



Mats for Fitness Too!

800-467-7321

www.earthhorse.com



Stall Doors & Grills
Stall Ventilation Gates
Solid Framed Fronts
Dutch Doors
Barn End Doors
All Welded Construction
Pre-Galvanized Steel
Powder Coated Paint



Member - MHC

Xtra Cocktailforchic

Qualified AQHA World Show 2020

Won AQHA Jr Reining Waco, TX
Finalist 2019 Tulsa Reining Classic
Finalist 2019 NRHA Futurity

2016 Mare
(Wimpyneedsacocktail x Tejana Chic)

Slidin' to the NRBC

We
would like to
Thank
Matt Florida
Purcell, OK
for a great year!

Cox Trailer Sales, Inc.
Upper Marlboro, MD

OWNER:
Skeeter Cox **301-367-7315**
J.D. Cox **301-367-7314**

OFFERING FOR SALE

Walterberry

Please Support Our Troops
and Wounded Warriors