



1020

WHAT SWITZERLAND DID FOR THE LUXURY WATCH,
**B&D BUILDERS DOES FOR THE
EQUESTRIAN FACILITY.**

B&D
BUILDERS
L.L.C.
Built Right or Not at All

Let's discuss your building vision.

717.687.0292 | BandDBuilders.com

Experience the Thrill!

TRAINING • LESSONS • SALES • BOARDING



Tricia Tillman
Head Trainer



**FOR SALE:
Boomed Out
Mercedes**

8 yo mare; Novice 1 eligible, but would make good ranch horse or broodmare.



Austin Morris,
Trainer

Bob LaPorta



**CONGRATULATIONS TO OUR
SOUTHEASTERN REINING
HORSE ASSOCIATION
WINNERS**

South Carolina Equine Park,
Camden, SC (Sept. 16 - 20)

John Wayne Tag (Summerwind Farm) & Austin Morris: Ch. Rookie Professional (9/18)

Smart Sara Roos (owned by Mike Riley, Dickerson, MD) & Austin Morris: Res. Ch. Rookie Professional (9/18)

John Wayne Tag (Summerwind Farm) & Austin Morris: Res. Ch. Intermediate Open (9/19)

John Wayne Tag (Summerwind Farm) & Austin Morris: Res. Ch. Limited Open (9/19)

John Wayne Tag (Summerwind Farm) & Austin Morris: Ch. Rookie Professional (9/19)

Smart Sara Roos (owned by Mike Riley, Dickerson, MD) & Austin Morris: Res. Ch. Rookie Professional (9/19)

Summer Wind Farm proudly feeds

TRIBUTE
EQUINE NUTRITION
the POWER of RESULTS™

www.TributeEquineNutrition.com

**Special
Package
Rates on
Youth, Non-Pro
& Beginner Adult
Lessons**

ALWAYS QUALITY REINING HORSES FOR SALE

SW Summer Wind Farm
Reining Horses

301-466-8367

10901 Moxley Road
Damascus, MD 20872

Owners: Bob & Debby LaPorta

www.SWReininghorses.com • Summerwf1@aol.com

TOC



Publisher: The Maryland Horse Council
https://mdhorsecouncil.org

Editor-in-Chief/Art Director: Katherine Rizzo
katherine.rizzo@equiery.com

Associate Publisher: Tracy McKenna
tracy.mckenna@equiery.com

Marketing Coordinator: Emily Nessel
emily.nessel@equiery.com

Bookkeeping: Carolyn Del Grosso
carolyn@equiery.com

Advertising Design: Peggy Ingles
Advertising Design: Kristen Barth

To submit photos and stories to
The Equiery, email editor@equiery.com.

To advertise in *The Equiery*, call
1-800-244-9580.

The Equiery is brought to you by
The Maryland Horse Council
(844) MDHORSE (844-634-6773)
mdhorsecouncil.org

President: Neil Agate
nagate@mdhorsecouncil.org

Membership Coordinator: Emily Nessel
membership@mdhorsecouncil.org

To join the Maryland Horse Council, go
to join.mdhorsecouncil.org



The Equiery is published 12 times a year (monthly), and is distributed, free, in tack shops and feed shops in & around Maryland. For more information on equestrian services in Maryland, please call 1-800-244-9580 or 410-489-7826.

The Equiery offers print & digital marketing packages to fit your needs! Call **1-800-244-9580** or **410-489-7826** to personalize your marketing package.

PRINT ADVERTISING

DISPLAY AD SPECS

All ads appear in print and online at equiery.com

AD	WIDTH X HEIGHT
1/8 page	3 ^{-11/16} x 2 ^{-3/8} inches
1/6 page	3 ^{-11/16} x 3 ^{-1/4} inches
1/4 page	3 ^{-11/16} x 4 ^{-7/8} inches
1/3 page horizontal	7 ^{-1/2} x 3 ^{-1/4} inches
1/3 page pie	3 ^{-11/16} x 6 ^{-1/2} inches
1/2 page horizontal	7 ^{-1/2} x 4 ^{-7/8} inches
1/2 page vertical	3 ^{-11/16} x 10 inches
2/3 page horizontal	7 ^{-1/2} x 6 ^{-1/2} inches
Full Page	7 ^{-1/2} x 10 inches
Full Page w/Bleed	contact for specs
Page 3 or 5	4 ^{-15/16} x 10 inches
Back Cover	7 ^{-1/2} x 10 inches
Inside Front Cover	7 ^{-1/2} x 10 inches
Inside Back Cover	7 ^{-1/2} x 10 inches
Two-Page Spread	(2) 7 ^{-1/2} x 10 inches
Center Spread	15 ^{-5/8} x 10 inches

Let us design your ad! Premium or special placement available. Please call for more information. Deadline for all advertising, unless otherwise indicated, is the 10TH of the month preceding publication.

ONLINE ADVERTISING

EQUIERY.COM BANNER

Banner ad on equiery.com with link to your website. Ad size: 300 x 127 pixels at 72 dpi

EQ E-MARKETING

Eblasts available with purchase of a display ad. *Equiery* Marketing Eblasts will use the same PDF as the print ad. Custom designs available for an additional design fee.

SOCIAL MEDIA

Talk with an *Equiery* representative today about social media advertising opportunities, all custom tailored to meet your marketing goals.

SERVICE DIRECTORY

Logo & 20 words or business card. Service directory ads are 2.375 x 1.5 inches (width x height) Book for 3, 6 & 12 month options for best buys!

CLASSIFIED ADVERTISING

Classifieds start at \$5 for 3 lines; \$4 per additional line; \$5 per bold headline. \$50 Photo Classifieds

COMING EVENTS

Free for MD events and display advertisers. Printed in the March issue each year and updated online year-round. Call about Facebook posts!

TRAINERS/INSTRUCTORS

Up to 40 word description plus photo, phone number, email address & website. Book for 3, 6 & 12 month options for best buys!

GREENER PASTURES

Special Memorial Packages! Free ad design. All Greener Pasture prices include layout & ad design. Plus, a donation will be made, in the name of your animal, to the Maryland Equine Transition Service. For information on the METS program, visit www.mets.md-horsecouncil.org.

Become a Maryland Horse Council sponsor and receive *Equiery* advertising perks!

Become a Maryland Horse Council member and receive an *Equiery* subscription!



Scan the QR Code
above to join!

Kingdom Full



Rippeon Equipment Co.

FREDERICK

9640 Liberty Road
Frederick, MD
301-898-1200

GAITHERSBURG

700 East Diamond Avenue
Gaithersburg, MD
301-670-9300

WESTMINSTER

1115 Baltimore Blvd.
Westminster, MD
410-848-5000



Kubota

BX2680

- Liquid-cooled, 3 cylinder diesel engine
- 6.6 gal. fuel tank
- HST Transmission / 4 WD
- Hydrostatic Power Steering
- Live independent PTO (w/hydraulic clutch)

FINANCING AVAILABLE

See Us For All Your Kubota Needs

www.rippeonequipment.com

FULL LINE OF PARTS

PICK UP AND DELIVERY AVAILABLE

SERVICE EXCELLENCE AWARD



From the President

By Neil Agate, MHC President

As the days start getting shorter and the leaves begin to change, we all try to get those last trips to horse shows or trail rides with friends in before the weather makes them less pleasant. At the Maryland Horse Council and *The Equiery*, we also start to think about the holidays and what they mean to us individually.

As part of the Maryland horse community we all have many things to be thankful for, as our community has such a strong foundation. That foundation is further strengthened throughout the state by a large number of non-profits and charities that support aspects of our community that wouldn't otherwise be sustainable. This year is probably not the best year for any of us to make donations, but that in and of itself is a reason to dig a little deeper. Because of the COVID-19 pandemic, it is even more critical to support the Maryland non-profits that support our horses, as they are dealing with shortfalls in their donations. So please take a look at the non-profits in this edition and consider them for your support.

Since we started the Maryland Equine Transition Service (METS) in 2018, we have been working on setting up the Maryland Horse Council Foundation (MHCF) as a 501(c)3 non-profit that could run the METS program after our initial grant ends. I am happy to say that not only is the new foundation officially set up and registered, but we have also recently received our letter from the IRS that allows donations to the Foundation and METS to be tax deductible.

Now the hard work begins! We have been working with the METS team and the MHC Executive Committee to get everything set up correctly and now we need to get the word out about both MHCF and METS as well as solicit people's help, both time and financial. We are currently in the process of building out our Board of Directors and if you have expertise in the non-profit world and would like to be a part of a unique organization whose sole purpose is the protection of our Maryland horses, please reach out to me via nagate@mdhorsecouncil.org.

Finally, you'll see a new section in *The Equiery* (on page ## of this issue) that is the result of a consolidation in membership categories that has occurred over the last few months. Ever since I became involved with MHC over a decade ago, I have been asked about our membership categories. People were often confused about what category they fell into and many

individuals who earned their living in the horse business felt they wanted to participate in ways that weren't available to Individual members.

We have consolidated the Farm, Business and Non-Profit memberships into one single category, the Industry Professional member. In addition to an enhanced list of membership benefits, we will also focus on our Industry Professionals in a dedicated section of *The Equiery* each month. Like all of our membership categories, the Industry Professional membership is open to all qualified individuals and organizations, and anyone can join MHC. Just visit <https://join.mdhorsecouncil.org> or contact our Membership Coordinator Emily Nessel at membership@mdhorsecouncil.org or 443-717-0120.

The Maryland Horse Person

By Jane Seiger, PAC Chair

What does it mean to be a "Maryland Horse Person?"

It means that we are lucky enough to be part of arguably the strongest and most vibrant equestrian community in the nation. We celebrate this community, our "tribe," in so many ways - beautiful Fall trail rides with friends, thrilling to the stretch duel of Swiss Skydiver and Authentic, picking and choosing from an incredible banquet of shows, events, hunter paces, etc., cheering at rodeos and jousting tournaments, or just quietly enjoying watching our horses graze or feeling their soft nuzzling of our hair. The list goes on and on.


This strong community has a voice, the Maryland Horse Council, and that voice is heard in the halls of the legislature in Annapolis and the offices of regulatory agencies. In just the last year, we authored and secured passage of legislation that will make criminal any malicious interference with working horses. We worked diligently and successfully to ensure that the Governor and the State agencies respected the rights and needs of horse owners and horse farms as we all navigated the COVID-19 pandemic. And we closely monitored, weighed in on, and reported to the community about so many issues that affect our lives with our horses.

So please—stake your claim, secure your place in our community, our "tribe."

Join the Horse Council. Maryland Horse People Belong Together, are Strong Together! <https://www.mdhorsecouncil.org/membership/mhc-membership-options>

continued...

DONATE TODAY!



\$35 One Coggins Test
\$80 One Dental Float
\$100 One Assessment Visit
\$250 Gives one horse a dignified end when quality of life is poor

THANK YOU TO OUR MARYLAND HORSE COUNCIL SPONSORS!



JOIN.MDHORSECOUNCIL.ORG

Letter from the Publisher, continued...

And—please—donate to our Political Action Committee.

- Because Maryland legislators have REAL ability to affect our horses, our farms and our horse businesses.
- Because MHC works tirelessly with Legislators to ensure PRO HORSE legislative choices.
- Because legislators respond to PAC contributions and pay attention to organizations with robust PACs.

Please consider a donation today. Every dollar helps, but, by law, we must make our PAC disbursements before the Legislature opens its session in January. THANK YOU! <https://qrs.ly/agbzeta>

Making a Difference Through METS

By Emily Stakem, METS Program Coordinator

The Maryland Equine Transition Service is truly the first of its kind. METS is a statewide initiative, developed and supported by the equine industry, to ensure that safe alternatives for horses needing homes are available and accessible to all owners who need the service. Horses in need of transition come in every shape, size, breed, color, age, training level, and temperament. METS provides individualized services for these horses, including equine assessment, marketing assistance, end-of-life support, and facilitating the transition of horses to new homes.

This program is unique because it works with a wide network of industry organizations and professionals to source the best options – from retraining to retirement – for these horses, because no horse in Maryland should ever be at risk of entering the slaughter pipeline. By combining efforts with others in the equine industry, we're better able to help horses in need of transition.

With over 300 calls for assistance since 2018, it is clear that METS is a

needed service. By donating to METS, you're helping to ensure that we'll be there to help Maryland horses in need of transition. Your donations make a difference as METS has directly assisted with the transition of 93 horses since its full roll-out of services in 2018.

As we move towards 2021, our main goal is becoming self-sufficient. Our grant extension from The Right Horse Initiative ends in June 2021, so any and all donations are greatly appreciated to help keep our program up and running. Please use the donation envelope in this month's *Equiery* to send your contributions to METS.

Navigating the Non-Profit World as a Person of Color

By Abesabmabk Dahn, MHC Treasurer & The City Ranch founder

My journey in the non-profit community has been like what I expected. I expected it to be a long road to reach sustainability and we are not completely there yet. I expected that I, City Ranch, (because it's more than me alone), would have an uphill battle and that battle was and still is multifaceted. We took on a concept with City Ranch that had not been developed out. So we had to prove the concept and that we were capable of doing it.

I felt that the dominant class in the horse industry would not be supportive initially and only a small sector of my own class would be. THAT CONDITION HAS CHANGED. We are supported now by a cross section of the entire greater Baltimore/Washington community.

I expected that we had to provide a top quality service to grow while we were building the brand. And lastly I expected we had to be capitalized and organized to handle all of the rigors of the endeavor. The outcome to date has been worthy of the journey.

To read more about Dahn and City Ranch, go to equiery.com and search for "City Ranch."

We're the low-key dealer with the high quality trailers.

Traveled Lane Trailers

When we quote a Calico price, it's for a ready-to-use trailer. No pricing games!



Portax LK – Extra length for more storage!

Premium Aluminum Trailers



Interlocking Aluminum-Tube Walls

You don't need a truck to tow a Böckmann!



Böckmann Ramp/Door Ramp and Step-Up loading in one trailer!

Traveled Lane Trailers, Inc.
Centreville, Maryland

410-556-6850

www.traveledlanetrailers.com

Sales • Service • Hitches • Accessories • Financing

Delmarva Equine Clinic

Practice Limited to Horses

Janice Sosnowski, DVM
Michelle Egli, DVM
Christin Landis, DVM
Kevin Beaudoin, DVM

1008 South Governors Ave.
Dover, Delaware
P. 302-735-4735 • F. 302-526-2749
www.delmarva-equine.com

1020

We are pleased to announce that **Sara Brunsden, VMD**, has joined our practice



Serving Your Horse's Health Care Needs



EXPERTS IN SERVICE and CUSTOMER SATISFACTION

Discover it all at Waredaca.com
An MHB Discovery Center



NOVEMBER 7
Bowmans Feed & Pet Purina
Checkerboard Challenge Starter HT
\$\$ Cash Prizes for Top Riders \$\$

NOV. 14 (New Date)
Waredaca Pony Club Hunter Pace

WE ARE FOLLOWING ALL COVID-19 REGULATIONS. Check website for updates on lessons & activities.

1120

THE Eventing Education Center
www.waredaca.com
301-570-4191 • info@waredaca.com

Chapmen 1/4



LEGENDS

SPORT HORSE

SPORT HORSE PLUS

Legends Sport Horse Feeds are enhanced carbohydrate and fat formulas, meeting the needs of performance horses requiring additional stamina and calories.



Legends® feeds are fortified by Kentucky Equine Research to meet your horse's individual needs. For feeding advice or to create a custom ration, visit microsteed.com/legends. Visit ker.com/legends to read the latest in equine nutrition and health and subscribe to the Equineus® newsletter presented by Legends® Feeds.

VISIT US AT LEGENDSHORSEFEED.COM

www.equery.com | 800-244-9580

© 2020 Cargill, Incorporated. All rights reserved.

Manure Removal & Roll-Off Services



0920

*Offering 10, 15 & 30 Yard Cans
For Service Call*

Cory • 301-300-8335 or Bruce • 301-370-7111

Now Accepting Show Team Boarders!



Stall & Field Boarding,
Lessons, Camp.

Hunter Jumper
Lessons & Sales.

Indoor, Outdoor,
Trails, Show Teams.

Deana Tice, Brittany Tice and Hailey Johnson

Harwood, MD • 410-798-4980
www.enticementstables.com

0920

Farmers Co-op 2/3

NEWS & VIEWS

You Can Use

Horses Shot in Monkton

Two horses were shot while grazing in a pasture in the 4100 block of Old York Road in Monkton on the evening of September 24. Charles Grimmel, who owns the property, told the *Baltimore Sun* the horses belonged to his girlfriend, who had moved them to the pasture while her own pasture was being maintained. She found the horses early on the morning of September 25 when she went out to feed them and immediately called the police.

According to the Sun, the white show pony was already dead when the owner found them but the retired racehorse was still alive. He died shortly after being discovered.

Grimmel told the police department his tenant (who leases a house next to the pasture) heard gunshots between 11 pm and midnight but thought it was someone hunting. The tenant also stated he did not see anyone on the road.

The Equiry contacted the Harford County Sheriff's Department on September 26. At that time, no suspects had been named. Shortly afterward, a reward was offered to anyone with information about the shooting. As of press, no arrests have been made.

Laurel Park Opens Up for Limited Spectators

On October 15, Laurel Park reopened to a limited number of patrons after receiving the go-ahead from Anne Arundel County officials. The approval came after Governor Hogan issued a revised executive order allowing racetracks to accommodate up to 250 spectators.

The grandstand entrance at Laurel Park has been equipped with a thermal camera for temperature screening and is acting as the primary entrance for employees, patrons and owners each day. The Horsemen's entrance near the Racing Office and paddock is only staffed on live racing days for trainers, jockeys and backstretch personnel.

In addition, Laurel Park has reopened a limited concession area in the food court and the SportsBook Bar is open on Friday, Saturday and Sunday only.

Facial coverings are required for all guests and employees. Furniture has been rearranged to accommodate social distancing and physical barriers have been installed where person-to-

person interactions may occur. MJC also reported that increased sanitation measures and disinfections of all commonly touched areas such as self-service betting machines are occurring.

For additional information and protocols, please see www.mdhorsemen.com.

Kudos to Severn Hollyberry Bow

Severn Hollyberry Bow, an 11.1 hand Welsh Mountain Pony (also known as a Welsh Section A), earned her Legion of Merit from the Welsh Pony and Cob Society of America this past September. The Legion of Merit is award-



Kathryn Southard

Owner JudithAnn Hartman is all smiles after Severn Hollyberry Bow earned her last scores for the WPCSA Legion of Merit award.

ed to ponies who have won 1500 points with at least 500 points being earned in Performance classes and 500 points earned in Halter classes at recognized WPCSA shows.

"Holly" was bred in Arnold by Mary Benedict of Severn Oaks Farm and is owned and competed by JudithAnn Hartman of Copper Beech Farm in Tracy's Landing. All of Holly's performance points were earned in Pleasure and Carriage Driving classes. Over the years, Holly has won numerous WPCSA championship awards at the regional and national levels as well as WPCSA Open Championships in both Single

and Pair Combined Driving (CT and ADT). In the pairs competition, Holly was driven with her sister Severn Festive Bow.

New Stables for DC Mounted Unit

The Washington Post reported on October 8 that construction for a new stables off Independence Avenue for the U.S. Park Police Mounted Unit will begin in the next few months. Government officials and executives of the Trust for the National Mall broke ground for the project on October 7. The current stables were built 1976.

The new facility will serve as both a home for the Park Police horses and an education center. Located between the Korean War Memorial and D.C. War Memorial on the south side of the Mall, the new stables will include areas for public interaction with the horses, a heated wash and equipment room, a medical paddock and an office building for the officers. The facility will also offer public restrooms and two public viewing paddocks.

The Park Service has had the new stables on its wish list for nearly 10 years but it was not until the Trust for the National Mall caught sight of the project that fundraising really got going. Sheila C. Johnson, vice chair of the Trust for the National Mall and chair of the stables fundraising campaign stated that they have already raised \$13 million of the \$15 million project. Johnson has also donated a horse to the Park Service in the past. "We're still \$2 million sort," she said at the ground breaking. "The price tag keeps going up, because of COVID and the costs have gone up. I'm reaching out to people who want to continue to support us. I don't care how much they're willing to give."

She also thanked all those who have already given to the project and called the new complex a "game changer" for the National Mall.

Fair Hill Timber Course Honors Paddy Neilson

Family and friends of Paddy Neilson donated nearly \$700,000 to place his name permanently on the new Timber Course at Fair Hill, Fair Hill Foundation Vice Chair and Campaign Chair Jack S. Griswold announced in the September Fair Hill Foundation newsletter *The Fair Hill Bugle*. "We are overwhelmed by the

continued...

IF YOU HAVE NEWS, VIEWS OR UPDATES TO CONTRIBUTE, PLEASE SEND THEM TO THE EDITOR at The Equiry, P.O. Box 610, Lisbon, MD 21765 • FAX: 410-489-7828 • email editor@equiry.com. Be sure to include your full name, phone number and address. All submissions become the property of The Equiry.

outpouring of love and affection for Paddy,” Griswold said. “His reputation as one of the truly greatest steeplechase riders and trainers of all time motivated many to participate in this effort, and we are deeply grateful for their support. He was a wonderful friend to all of us.”

Griswold added, “We look forward to officially dedicating the Paddy Neilson Timber Course during the spring Fair Hill races in May 2021.”

Jay Meister told *The Fair Hill Bugle*, “Paddy Neilson didn’t always win, but he was always a winner. He was the Michael Jordan of our timber racing game. Paddy made our sport bigger and better while inspiring countless kids. We all wanted to grow up to be like him.”

“Paddy was a lovely man,” said Michael Dickinson in *The Fair Hill Bugle*. “I was a steeplechase jockey in England. I rode for 11 years and had 1,600 rides with 378 winners.” Dickinson added, “I thought I was all right until I hunted with Cheshire. I watched Paddy cantering across a field. He looked for a stride, and then he and his horse just flew (the fence). If he’d been in a race, he would have gained two

lengths. I said to myself, ‘Michael, you can’t even ride.’”

Louis “Paddy” Neilson III died on September 5, 2019 at the age of 77. He was born in New York to the late Louis Neilson, Jr., and Katherine Pell Neilson. Neilson graduated from the Gilman School and then Princeton University and the Wharton Business School. He was a corporate bond broker for Alex. Brown & Sons in Philadelphia while foxhunting, galloping race horses and steeplechasing on the weekends.

During the Vietnam conflict, he was a member of the First City Troop in Philadelphia, a division of the National Guard.

Here in Maryland, he rode in the Maryland Hunt Cup 21 times over three decades, winning it three times: in 1968 aboard Haffaday, 1974 riding Burnmac and 1989 with Uncle Merlin. According to Central Entry Office, he had 608 starts as a jockey over a span of 32 years, winning 143 times.

He was a founding member of the American Steeplechase Injured Jockeys’ Fund. He also chaired the Pennsylvania Hunt Cup Races for 17 years, and later the Plumstead Races for

11 years. In addition, he served on the original committee that began the Winterthur Point-to-Point.

Hope’s Legacy Premiere Raises Funds for Brooke USA

Director and producer Douglas B. Maddox premiered his latest movie “Hope’s Legacy” virtually on October 15 on the Equus Film Channel to raise funds for Brooke USA. The mission of Brooke USA is to significantly improve the welfare of working horses, donkeys and mules as well as the people they serve throughout Asia, Africa, the Middle East, the Americas and the Caribbean.

Filmed here in Maryland, “Hope’s Legacy” is the sequel to Maddox’s award winning movie “Christmas Ranch.” Portions of the online premiere ticket sales went to Brooke USA with the premiere launching the non-profit’s year-long “The Power of ONE” campaign to raise \$1 million for the charity.

MORE NEWS ON EQUIERY.COM! SUBSCRIBE FOR FREE!

FREE Tax-Saving Review for Equestrians! CPA Helps Fellow Horse Lovers File Their Taxes Worry-Free When Dealing With The IRS

My staff and I are adult amateurs who compete in various disciplines. When not competing, we are helping assist other people with tax filing, planning and other financial situations.

I have been an expert tax professional for over 15 years. Currently, I’m looking to accept a few more like-minded clients who share a similar passion for horses.

If you are looking for a CPA or financial professional who understands your unique situation, feel free to contact me at my office.

*Mention my “horse ad” and I will personally review your previous three years of tax returns at no charge as a fellow equestrian courtesy. (\$600 Value)

If you are not satisfied with my ability to help you and your tax situation for any reason, just say so and I’ll be happy to return all of your documents and buy you lunch for your troubles ... guaranteed. I want you to have zero risk in choosing my tax firm to help you with Uncle Sam.



Jennifer Allen, CPA

(301) 524-6335

www.jallencpa.com

0320

ON THE FARM OR IN THE WOODS

Tackle the outdoors with comfort and reliability.



RTV-X900CWL-H

- 21.6 Gross HP[†] 3-Cylinder Kubota Diesel Engine
- Variable Hydro Transmission (VHT-X)



RTV-X1100CWL-H

- 24.8 Gross HP[†] 3-Cylinder Kubota Diesel Engine
- Premium Grand Cab AC, Heater & Defroster

SIDEKICK
Durability meets speed

RTV-XG850WL-H

- Powerful 48.3 HP[†] Gasoline Engine
- CVT-Plus Transmission
- Selectable Full-Time 4WD
- General Purpose, Worksite & Special Models Available

Available
in Orange
or Camo!



1120



**BURKE EQUIPMENT
COMPANY**

Turning the earth into a better place.

BurkeEquipment.com

STORE HOURS: Mon – Fri 8–5 • Saturday: 8–Noon (March–October)

**Ranked #5 Kubota
Commercial Dealer
in the USA!**



Newark, DE
2063 Pulaski Hwy
Route 40
302.365.6000

Felton, DE
54 Andrews Lake Rd
Route 13
302.284.0123

Delmar, DE
11196 E. Snake Rd
Route 13
302.248.7070



[†]For complete warranty, safety and product information, consult your local Kubota dealer and the product operator's manual. Power (HP/KW) and other specifications are based on various standards or recommended practices. KCDA-14-143874-10

MHC PAC 1/3P

Loch Moy 1/6

The Great Lisbon FARMERS FEED THE HUNGRY Christmas Parade



Featuring Saddle Horses,
Carriage Horses &
Horse Power (Tractors)

presented by

The Howard County Farm Bureau

Tractors at Noon - Horses to Follow

Saturday, December 12, 2020

"Main Street" (Route 144) Lisbon, MD Western Howard County

Parade Proceeds

Howard and Carroll County Food Banks
Farmers & Hunters Feeding The Hungry
Lisbon Volunteer Fire Department
Donations of canned and dry goods appreciated.



Attention Horses - Registration Now Open!
Check the website for details.

www.lisbonchristmasparade.com 

1020



Helping our Military Heroes heal
BraveHearTriding.org

1120

Are you GIVING WISELY this year-end?

It's that time of year again when we gather to give thanks to friends and family, to celebrate our achievements for the year, and to give to those organizations most in need. For many of our readers, this means considering a number of different equine organizations for final year-end gifts.

There are countless worthy equine charities both in Maryland and across the United States. Sometimes, however, the process of selecting the charity that you feel most passionate about and comfortable giving to can be daunting. Fortunately, there are many great resources available to you to make sure you are working with and giving to a legitimate cause! National organizations (such as GuideStar and Charity Navigator) have become watchdogs for all types of charitable giving, providing useful information to the general public.

At *The Equiery* and the Horse Council, we have compiled a few tips from national philanthropic resources to help guide you through this giving season.

Be Careful of Names that Sound Alike

Uninformed donors can be easily confused by charities that have strikingly similar names. Many names are nearly identical, but their performances can be vastly different. Always double check the Charity Navigator ratings! One organization could have a 0-star charity rating while a charity with a similar name could be rated 3-stars. Informed donors take the time to uncover the difference.

In our world, the most common "sound-alike name" problem is with any organization that utilizes the phrase "humane society." The phrase "humane society" is used by lobbying organizations as well as hands-on shelters and rescues; it is employed equally by animal rights political activists and official local government

animal control offices. Take the time to check it out!

Confirm 501(c) (3) Status

Wise donors don't drop money into canisters at the checkout counter or hand over cash to solicitors outside the supermarket. Situations like these are irresistible to scam artists who wish to take advantage of your good will. Smart givers only support groups granted tax-exempt status under section 501(c)(3) of the Internal Revenue Code. All of the charities evaluated by Charity Navigator meet this basic requirement.

We cannot stress enough how important it is to ensure that an organization has a confirmed 501(c)(3) status and is registered with Maryland's Secretary of State <https://sos.maryland.gov/Charity/Pages/default.aspx>

In order to solicit donations in Maryland, Maryland law requires that an entity must be registered with the Maryland Office of the Secretary of State. There are some entities that can legitimately accept contributions without being an established, IRS-recognized, charity (such as a bank account temporarily set up to collect funds to help defray immediate major medical costs for an injured rider), so long as that entity is registered with the Office of the Secretary of State. To find out if an organization to which you wish to contribute is legitimate, check with the Office of the Secretary of State. If an entity is not registered, do NOT give it money, as it is breaking the law.

Confirm Commitment to Accountability & Transparency

Both GuideStar and Charity Navigator have tools for assessing the accountability and transparency of a charity. This data is critical because charities that follow good governance and transparency practices are less likely to

engage in unethical or irresponsible activities, so the risk that such charities would misuse donations is lower than for charities that don't adopt such practices.

In Maryland, equine rescues and horse sanctuaries are required to be licensed by the Maryland Horse Industry Board. If the facility is not licensed but is sheltering horses that are ostensibly rescued or is adopting out horses, you may wonder about other ways in which the facility may be noncompliant. Licensed stables can be found at <https://portal.mda.maryland.gov/stables>. Also, if the rescue is soliciting donations, check to see if it is registered with the Maryland Office of the Secretary of State.

Obtain Copies of the Charity's Financial Records

Savvy donors know that the financial health of a charity is a strong indicator of the charity's performance. They know that with most programs, the most efficient charities spend 75% or more of their budget on their programs and services, and less than 25% on fundraising and administrative fees. They also understand that a claim of zero fundraising and/or administrative fees is unlikely at best. Wise donors understand that a charity's ability to sustain its programs over time is just as important as its short-term day-to-day spending practices. Knowledgeable donors also seek out charities that are able to grow their revenue at least at the rate of inflation, that continue to invest in their programs and that have some money saved for a rainy day.

All horse rescues, equine sanctuaries or therapeutic programs should be willing to provide their financial records, even if unaudited.

Days End Full

Days End 2/3

The Maryland Thoroughbred Eventing Series



- Series includes the Maryland-based United States Eventing Association's recognized horse trials and Maryland-based unrecognized/starter horse trials. It is open to anyone who is competing a Thoroughbred (not limited to Maryland residents)
- Competitors must complete 3 of the Maryland-based horse trials, in any combination of recognized or starter.
- Complete more than 3 events, only best scores kept.
- Cash and Sponsor Prizes for top 3 horse/rider combinations will be presented in November.

MDTE SERIES SPONSORS:

RECOGNIZED DATES

Nov. 8: Full Moon Farm HT

UNRECOGNIZED DATES

Oct. 31 - Nov. 1: MDHT Starter
Nov. 7: Waredaca Starter HT

mdteventing@gmail.com • www.MDTeventing.com



Potomac Valley Dressage Association

Promoting education in the art & sport of dressage since 1964

Time to Renew Membership for 2021!

Renew your membership now and be ready for 2021. You can renew online at www.pvda.org or through a paper renewal. Forms available online under About > Join PVDA.

Your PVDA membership include a GMO membership to USDF and satisfies the GMO requirement for BLMs.

We're planning some great virtual learning opportunities, stay tuned for all of the details.

Jr/YR, Adult, Senior, and Family memberships available!

Find a chapter near you! View our full calendar online. See what PVDA can offer you at www.pvda.org

1120

1020

Days End
1/2

Waredaca
PC 1/8

RRP 1/4

Mount Har-
mon 1/8



OFFERING

Layups-Rehabilitation-Post Surgical Care
Equine Sports Massage Therapy
Training-Sales-Lessons
Individualized Care & Training

SPECIALIZING IN:

Thoroughbreds & Sport Horses
Starting Youngsters & Second Careers

Helping riders communicate with their horses using biomechanics & solid foundation techniques.

- ❖ New Indoor & Stalls • Large Outdoor Arena ❖
- ❖ with All-Weather Footing • Jump Field ❖
- ❖ Round Pen • 2 Bluestone Rehab Paddocks ❖
- ❖ Small Group or Single Horse Turnout Options ❖
- ❖ Ample Room for Hacking & Conditioning ❖

SABRINA MORRIS

"A" Pony Club Graduate

240-674-8396

smorris@anotherroundfarm.com
WWW.ANOTHERROUND FARM.COM

Another Round Farm is the realization of a dream to operate a high quality training, rehab and layup facility in the heart of central Maryland.

1120

Support METS this Giving Tuesday!

The **Maryland Equine Transition Service** is a nonprofit program of the Maryland Horse Council Foundation. Our mission is to assist Maryland horse owners find safe, responsible options when they need to rehome their horse, whatever the reason may be. We also offer end-of-life resources, as well as access to a range of other much-needed support systems.



1120

Donate here:

<https://donatenow.networkforgood.org/mets>



www.mdequinetransition.org * info@mdequinetransition.org * 410-970-6474 * PO Box 606, Lisbon, MD 21765




Times are **TIGHT**
But you **CAN** save money.
It is **TIME** to reassess your insurance policies.

- Are you paying for too much insurance? Too little?
- Do you need to raise your deductibles to lower your annual costs?
- Is there some coverage you can drop?
- Is there other coverage that you can't afford NOT to have?

You have the time - no excuses. Call Today.

Kitsi Christmas
Christmas Insurance
A Rated Companies
Fax 1-800-470-2423 • 301-509-4552
www.Christmasinsuranceagency.com
kitsi@christmasinsuranceagency.com

Offering a Full Line of Insurance Products
Liability (including Care, Custody & Control, Boarding, Breeding, Umbrella, Racing, Training, Instruction)
Workers Compensation (Coming Soon)
Property (farms, residents, barns, machinery, tools, tack, automobile)
Equine (Full Mortality • Major Medical • Loss of Use)
Give your business a Christmas gift - call Kitsi today.



LIGHTNING ROD SYSTEMS
Installed and Repaired

We protect Houses, Barns, Stables, Pole Barns and Trees.
U.L. Listed Materials
N.F.P.A. Member

Family Owned Since 1950
Serving PA, DE, MD, NJ, & NY

William Burden 800-557-9037
www.wblightningrods.com

Like us on Facebook



Winterize Your Horse!

Is your horse ready to be healthy and happy through the cold winter ahead?

- Hay & feed provisioned?
- Hoof care?
- Vaccinations current?
- Dental care / float?
- De-worming?

If you're struggling to afford the care that will keep your horse healthy through the winter, Maryland Fund For Horses can help. We have grant programs for healthcare, castrations, and other assistance for horse owners in need.

Contact us.
info@mdfundforhorses.org

Maryland Fund for Horses
Doing the Right Thing For Maryland Equines



Maryland Fund For Horses is a 501(c)(3) public charity. Monetary and in-kind donations are tax-deductible to the extent allowed by law.



Because of COVID-19 the horses need you now more than ever!

PLEASE DONATE.

Give a tax-deductible healing gift today at DEFHR.org





The Equiry's Annual Philanthropic Awards

In 2019, *The Equiry* launched a new annual feature to celebrate those people and horses that contribute greatly to the non-profit community. Anyone can nominate a non-profit staffer, volunteer or horse for this annual award. The award committee reviews nomination essays and picks three to print in the November Charity issue with all nomination essays being posted on equiry.com throughout the month.

This year we received nominations for six people and three horses. Read all of their stories on equiry.com this month!

Special Olympics Coach Ashley Whitlock

submitted by Dr. Helen Tuel, founding director of TRRC

It may seem impossible but Head Coach Ashley Whitlock accomplished the Herculean task of yearlong, weekly training, committed attendance lessons for an oversized and growing Special Olympics team of 23 members!

Please know it takes the entire TRRC instructional staff, a core of volunteers and dozens of family members to prepare each year for the Special Olympics State Summer Games. Everyone involved is thrilled to be able to assist in outfitting each rider with appropriate show clothing, often gently used, or donated tack, spotlessly cleaned and conditioned and, of course, inspected! It takes an army to make this event happen and to make it successful.

Of course, every equine is meticulously bathed and groomed to perfection, as all prepare for a razz-ma-tazz Opening Ceremony with the Mounted Police, singing of the National Anthem and blessing of the riders and equines!

The riders are so proud of their Center, and every Olympian appreciates the generosity of spirit and resources. The work here is immensely gratifying and endless. Coach Ashley keeps the magic and allure of the equestrian world alive and well. TRRC cannot make this journey without community. Coach Ashley ensures that TRRC continues to succeed and meets the challenges of a changing world, and we are grateful.

Warmest wishes, first and foremost, to Head Coach Ashley Whitlock and to all who participated, for a year of health and happiness from your TRRC family. Thank you for believing in us and for loving the children and adults in our care to provide them with bright futures filled with promise and endless possibilities and opportunities and brimming

with much success. Thank you, most importantly, for helping them heal and grow.

Volunteer Coordinator Vicki Fried

submitted by the Frederick County 4-H Therapeutic Riding Program

The Frederick County 4H Therapeutic Riding Program is nominating Vicki Fried. She has made a huge, positive impact with our program, and in the Maryland equine community with horses who are seeking their second career.



Ashley Whitlock of Therapeutic & Recreational Riding Center

Vicki is the program's Volunteer Coordinator and the first contact for prospective volunteers, providing a "Meet and Greet" at the barn, filling them up with enthusiasm and encouraging them to sign up.

With extensive COVID guidelines to provide a safe and fun experience for our special needs riders, Vicki has kept us on track, ensuring we are following the guidelines and staying organized – signing up leaders and side walkers to work with each of our riders and horses. Vicki keeps in contact with our volunteers about their schedule,

either by email, text, or phone and makes sure they know what's happening at the barn.

Extremely energetic and compassionate about people, both volunteers and our riders, Vicki greets everyone with a warm welcome. Without volunteers, riders cannot ride. Vicki began volunteering eight years ago and encourages many young riders to work towards their goals – holding reins, steering, choosing the correct color of an object, and talking to their horses. She is also committed to assisting with and providing the best care our equine heroes can receive. She assists with the training, feeding, and care of our horses, most of who are over



Vicki Fried of Frederick County 4-H Therapeutic Riding Program

19 years old and in their second or third career.

The Generosity of Tilly

submitted by Mollie Beach

Hi Country Phantom, "Tilly" for short, is one of Chesapeake Therapeutic Riding's Paint mares. She is 23 years old and was a pleasure horse before being donated to CTR. Since she has been with us from almost the very beginning, she has been able to impact almost every person who has stepped foot into the stable.



Chesapeake Therapeutic Riding's Tilly

Tilly has participated in the vast majority of our programming. She is a part of our therapeutic riding program, our veterans program, and our hippotherapy program. Most recently, she has been involved in our virtual programming; sending videos to our therapeutic students, the Maryland Department of Veterans Affairs, and the Harford County Public Library. She has helped on field trips with horse powered learning and other programming with equine assisted learning. Additionally, she is trained to drive. Her gentle nature makes her suitable for all types of therapeutic work.

Tilly is able to teach more than just horsemanship skills to our clientele. While she is a favorite in all of our mounted programs; she also teaches our volunteers and unmounted guests about interpersonal skills. Tilly is one of the most emotionally aware horses. She teaches individuals to be present in the moment and focused on the task at hand; otherwise there might be a gentle reminder that there is a large living animal at the end of the leadrope. She teaches people to be authentic and thoughtful. Tilly appreciates leadership that listens, while also being an excellent listener herself. She helps teach responsibility to volunteers, which in turn breeds maturity and a good work ethic. This kind mare could teach classes all on her own if people would practice slowing down and being humble learners.

Tilly is being submitted for nomination due to her years of assistance at Chesapeake Therapeutic Riding, her well-rounded resume, and her clear expression of herself to help others learn and develop.

MAAC Rolloffs & Equine Services

Manure Removal
(Roll-Off or Pile)
Bedding (Sawdust)

Adamstown, MD

301-607-4381

Serving

Montgomery, Frederick, Howard, Carroll,
Prince George's, Anne Arundel & Washington
Counties and Loudoun County VA

Visit us on the web at midatlanticagconsulting.com

0720

RSD 1/2 v

Now Accepting Boarders



- 65 Acres • 12 X 12 Stalls • 1 Barn Aisle is Heated
- Hacking Areas • Outdoor Arena • Round Pen
- Individual Paddocks w/Run-in Sheds & Auto Water
- Large, Lush Pastures w/Run-in Sheds & Auto Water
- Lounge • Bathroom & Shower
- 2 Hot & Cold Wash Stalls

\$350 STALL BOARD



\$300 FIELD BOARD



Mason Dixon Stables

618 Humbert Schoolhouse Road, Westminster, MD
Convenient to Littlestown, Hanover & Taneytown

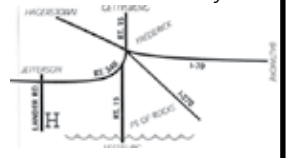
717-725-9834

0820

Classifieds

BLUE RIDGE TRAILERS LLC

Alice & Pete Drayer



SALES • SERVICE

www.blueridgetrailers.com
JEFFERSON, MARYLAND

Phone: 301-473-1234
Fax: 301-473-4424

ESTABLISHED SINCE 2000



**AUTHORIZED DEALER FOR
GORE TRAILER MFG**

Horse & Stock GN/BP Models Available

Trailer Repairs & Hitch Installation on All Makes & Models

4111 Lander Road
Jefferson, MD 21755
(5 miles west of Frederick, MD)

www.blueridgetrailers.com
dodgendaja@aol.com • 301-473-1234

0320

P.H. DRAYER CO. INC.
BUILDINGS • BARNS • FENCING
301/473-4466
FAX: 301/473-4424
Established Since 1985



FENCING: Horse & Livestock

Wood Board • Horse "No Climb" • Wire Mesh
American Wire • Hi-Tensile • Vinyl Tape

BUILDINGS: Custom Designed

Renovations & Repairs • Post and Frame
Horse & Livestock Barns • Arenas
Equipment Storage & Shops • Garages

Materials Available

Jefferson, MD (5 miles from Frederick, MD)
www.phdrayerco.com • 301-473-4466

BLUE RIDGE TRAILERS, LLC

Sales and Service (on any Make or Model)
Dealer for GORE TRAILER mfg.

www.blueridgetrailers.com • 301-473-1234

0320



Experience the First Class Difference

- Plumbing
- Heating
- Air Conditioning
- Well Pumps & Water Treatment
- Livestock Waterers (*Certified installer of Nelson® automatic waterers fresh, clean water all the time.*)

410-876-2434

Offering SAME DAY well pump service

Master Plumber #026452 • HVAC #5537

FirstClassMechanical.com

0020

Classifieds

- ❖ 240 acres in So. Frederick County
- ❖ Field and Stall Board
- ❖ Two Outdoor Arenas & Round Pen
- ❖ Schooling Jumps, Cavaletti
- ❖ Groomed Trails, Water Crossings
- ❖ Cross Country Course (Maiden/Beginner)
- ❖ Miles of Trails for Endurance Riders!

Quality Hay Grown on Our Farm

Reichs Ford Farm

TRAIL MEMBERSHIP
AVAILABLE

9611 Reichs Ford Rd
ljamsville, Maryland
240-674-4825
reichsfordfarm.com



0020

Classifieds

MARYLAND RESIDENTS RECEIVE
IN-STATE TUITION
in select programs

Apply by December 1

For more info, visit students.ca.uky.edu/maryland

HORSE SUPPORT, LLC

Bob Ciri • John & Josh Lyons Certified Trainer

WOULD YOUR HORSE BE PERFECT IF ONLY...?
 He would listen?
 He were more physically capable?
 He didn't anticipate your commands?

DO YOU JUST NEED "A BIT OF HELP" TO MAKE HIM PERFECT?

Now offering Western Dressage Instruction

301-928-2828 • www.cooperativehorsemanship.com

20 Years In Business

PROFENCE LLC

We Build To Please

- High Tensile
- Board Fence
- Woven Wire, Non Climb
- Poly cote Horse safe wire
- Horse Rail
- Deer Fence

Call: 1-877-736-8244
 Email: Brian@profence.org
 Visit : www.profence.org
 Serving: PA, MD, WV, VA, NJ, NY
 Located in Shippensburg, PA

BARTLEY TRAILERS

Service with this ad **10% Off**

Servicing all types of Horse Trailers
Sales • Repairs • Safety Inspections • Parts

15095 Frederick Road
Woodbine, MD 21797
301-774-3332



Authorized
Homesteader
Stallion Dealer

www.bartleytrailers.com
16613 New Hampshire Avenue
Silver Spring, MD 20905

0320

Classifieds

Autumn at PHC

Contact Us About Special Opportunities for Riding

(We follow best practices for the prevention of COVID-19, including physical distancing.)

Fall Lessons!
Through November 22
Call for availability

Where
DC/MD/VA
Learn to Ride!

**Ride Experienced
School Horses in a
Safety-Conscious Environment**

Horse Ownership Not Required

No Pressure for Riders to Compete

Convenient Location

Legendary Facilities

Professional Staff



14211 Quince Orchard Road
North Potomac, MD 20878
301-208-0200
www.PotomacHorse.com

A Public Facility Leased from the Maryland-National Capital Park and Planning Commission

1120

Classifieds

Javier Donatelli

EQUINE VETERINARIAN LLC

*A Mobile Equine
Veterinary Practice*



Direct Digital
X-Rays,
Ultrasound,
Extracorporeal
Shock Wave Therapy,
Sport Medicine,
Dentistry

Cell - 240-676-1990
Fax - 240-489-3083

javdonatelli@hotmail.com

P.O. Box 365 • Poolesville, MD 20837

0320

Come board in Paradise



Maryland's Premier Pleasure Barn

*Where being with your horse ...
is always a pleasure.*

- Light-filled 80 x 120 Indoor Arena
- 100 x 200 Outdoor Arena
- Jumps & Training Obstacles Available
- 300+ acres of Trails
- Climate Controlled Observation Room
- Climate Controlled Tack Rooms w/Private Lockers
- Hot Water Wash Stalls
- Stall or Field Board
- Lay-up Paddocks Available
- Specialty Individualized Horse Care
- Monthly Fun Days and Lessons with Joe London
- Outside Trainers Welcome
- Drama Strictly Prohibited
- Convenient Location



1020

Rick Shaffer
Trail Horse Testing Program
Clinic & Evaluation
October 26 & 27



PARADISE STABLES 6250 Detrick Rd. • Mount Airy, MD 21771
paradisestables.com • paradisestablesllc@yahoo.com

Discover Peace in Paradise

301-865-4800

HOLIDAY SHOPPING STARTS HERE!

The Gift Guide will also
appear in the December issue!

If you'd like to be a part of it,
contact Tracy McKenna by
November 10, 2020.

For package details, visit
www.equiere.com/holiday-gift-guide-special/



Handmade Wreaths Rolled Beeswax Candles & Soy Wax Melts



Horse, Crab, Goat, Chicken, Peacock,
Anchor, Advent Wreaths & more!
Shipping Available

Bowensville Farm & Nursery
443.404.4773 • www.BowensvilleFarm.com

1120



Buy Your MistyMints Here!!!

Now
Online

"Treat Your Horse To Only The Best!!!"



Online Special
Buy 5 And Get 1 More Free!!

MistyMints.org

Dallimist Treat Company, LLC Frederick Maryland

0720



4502 Old National Pike Mt Airy, MD ♦ STABLEMATESINC.COM
800-696-5560 ♦ 301-829-0333

EXCLUSIVE COUPON

BUY 1-GET 1 50% OFF*

ALL WINTER RIDING APPAREL**

MUST PRESENT COUPON FOR DISCOUNT! EXPIRES 11/25/2020
*Purchase 1 item at regular price-Get 2nd regular priced item of equal or less value at 50% off. Discount excludes sale items. **Winter Apparel Items include: Winter Hats, Winter Gloves, Winter Socks, Winter Riding Pants, Sweaters, Long Sleeve Shirts, Jackets & Scarfs.

Follow us on Social Media @Stablemates Saddlery

THANKSGIVING WEEKEND SALES EVENT!

November 27th - 30th, 2020

15-20% Off STOREWIDE

Sale Limited to Items In-Stock Only. No Special Orders or Rain Checks. Excludes Price Locked items, Clippers, Blades, Repairs, Blanket Washes, and items already marked on sale.

Happy Thanksgiving

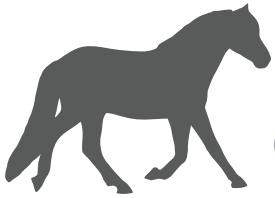
WE WILL BE **CLOSED**, THURSDAY, NOV. 26TH
TO CELEBRATE WITH OUR FAMILIES!

1120

FAIR HILL

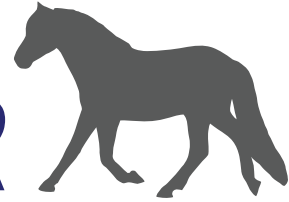
SADDLERY

www.fairhillsaddlery.com



it's our

ONE YEAR



ANNIVERSARY

CELEBRATE WITH US!

SIDEWALK SALE

NOV. 20TH - 22ND

SALES, DOOR PRIZES

GIVEAWAYS

AND MORE!

NOV 25TH - 29TH

Thank You!

We greatly appreciate your continued loyalty
and the opportunity to serve you!

5930 Telegraph Road, Elkton Md.

443-406-3456



1120

What do you get the person who has everything? Are you trying to minimize the amount of stuff this giving season?

Give a gift that counts. Donate to METS, and help Maryland horses find safe homes.

<https://donatenow.networkforgood.org/mets>



“The Original Hay Hut”

Keep your hay fresh, cool and dry at all times!

Available at

Farm & Home Service, Inc.

Sykesville - (410) 795-1234 Brunswick - (301) 834-7141
Ellicott City - (410) 465-0930 Poolesville - (301) 948-5372
Taneytown - (410) 756-6711

1120

1/2 H open

Reg OA full

Reg OA full

Reg OA 2/3

1/6 open

CROSSROADS TRAILERS

LARGE INVENTORY OF HORSE, STOCK & LIVING QUARTER TRAILERS

CRICKET GOLF CARTS



2021 EXISS + 3H SPORT GOOSENECK



2021 + SUNDOWNER 2 + 1



2021 HOMESTEADER STALLION 2 H WARBLOOD W/DR



856-697-4497
FAX: 856-697-3835
SALES@CROSSROADSTRAILERS.COM

1230 HARDING HIGHWAY
NEWFIELD, NJ 08344
WWW.CROSSROADSTRAILERS.COM

1020

ALTERNATIVE THERAPIES



P.E.M.F. therapy
 Heal faster with drug free pain relief!
 Speed healing from injuries including:

- wounds
- inflammation
- muscles
- tendons
- navicular
- hoof abscess
- bones
- ligaments

Text 240-793-3578
www.powerthroughyou.com
wendy@powerthroughyou.com

End Stall Rest sooner!

0320

BLANKET REPAIR

HORSE BLANKET KARE

- See Classified in Saddles/Tack for Blanket & Tack Liquidation •

Wash, Repair, Waterproofing & Consignments



Kathy & Karrie Recknor
 (301) 330-5551
 14711 Seneca Road
 Darnestown, MD 20874

ADDITIONAL FREDERICK LOCATION

0320

CONTRACTORS



JRM & SONS EXCAVATING, LLC.

Specializing in indoor & outdoor arenas

Ponds • Roads & Driveways • Trails Clearing & Grading • Bobcat Services Pads for Run-ins & Barns

see photos at www.jbmexcavating.com
 bobby@jbmexcavating.com • 443-532-4035

30 Years Experience
 Licensed & Insured

Anne Arundel, Charles, Calvert & St. Mary's Counties

0320

ANIMAL CREMATION/BURIAL



Agape pet services

TRUSTWORTHY EQUINE CREMATION WITH TRANSPORTATION

301-432-0431 www.agapetpetservices.com

- Pick up at your Location
- Available 24-7
- Respectful & Gentle Handling
- Beautiful Selection of Urns & Keepsakes

Easing the loss of your horse with integrity & compassion

0320

SEW WHAT



HORSE BLANKET WASHING, WATERPROOFING & REPAIR

Barb Carr 410-984-0167

3380 Salem Bottom Road Westminister, MD 21157 seewhatblankets@verizon.net
www.seewhatblankets.com

1020



P.H. DRAYER CO INC

BUILDINGS • BARNS • FENCING
 301-473-4466
 FAX: 301-473-4424

www.phdrayerco.com Jefferson, Maryland 21755

0320

APPRAISALS

R.L. Graham Appraisal Service

EQUINE APPRAISERS

ALL BREEDS & DISCIPLINES
 SPECIALIZING IN THOROUGHBREDS

Certified member American Society of Equine Appraisers
 2960 Duvall Road • Woodbine, MD 21797
 410-615-9704
www.rlgrahamstable.com • Robinht@aol.com

0320

Don't see a category that suits your service business? Just ask!! 410-802-4219 or tracy@equiery.com

Quality Custom Buildings



PRECISE BUILDINGS

717.768.3200 • www.PreciseBuildings.com

0320

ARTISTS

JUMP-START YOUR BUSINESS

Affordable Web Design
 Logos • Graphics • Photos

Reliable & Experienced
ENTICE DESIGN, LLC

443.798.0709
www.entice-design.com

0320

BRAIDING/GROOMING

Wendy's Clip Art

Body Clipping & Mane Pulling

Over 30 Years Experience
 All styles - adapted for owners'/horses' needs

At Your Barn & Convenience
 Wendy Emblin
 410-984-2998 (cell) • 410-489-7031

0320

DENTISTS

FAVRE EQUINE DENTISTRY

All Breeds - All Levels - All Disciplines

Bruno J. Favre, EqDT

Cell (410) 935-1478
 Home (410) 867-0605
brunofavre@verizon.net

Certified by VA Board of Veterinary Medicine
 Serving Equine Professionals on the East Coast and Abroad

0320

ATTORNEYS

BEDDING

BLANKET REPAIR



CELEBRATION Farm

- 👉 Horse Blanket Washing & Repair
- 👉 Quick Turn-Around
- 👉 Monogramming
- 👉 Space Bag Storage
- 👉 Delivery
- 👉 Free Pickup of 20 or more

443-745-0207

9961 Green Valley Road, Union Bridge, MD 21791
www.celebration-farm.com

0320

CARRIAGE RIDES

CONTRACTORS

FARM AND EQUINE SERVICES

Quality Construction - Customized Structures
 Horse Amenities - Fencing - Expert Solutions



240-818-8595 FarmAndEquine.com

0320

EQUINE NUTRITIONISTS

FARM SERVICES

FARRIERS

BARROWS FARRIER SERVICES



Mobile Phone 443-334-6098
www.barrowsfarrierservices.com

0320

FARRIERS



Salzmann Farrier Services
Environmentally Friendly Horseshoeing

Andy Salzmann 913-548-3388
Farrier
andrewsalzmann@gmail.com

FENCING

Chester County Fencing Provides Quality Horse Fencing!

Vinyl Horse Rail • Post & Board • Centaur • Mesh Wire
Split Rail • Slip Board • Run-In Sheds



Call for a Free Consultation!
610-273-3300

FINANCIAL SERVICES

Order Today



Perfect for Service Businesses

# of Issues	Color
3 Months	\$210
6 Months	\$330
12 Months	\$576



**410
802
4219**

LEATHER WORK/REPAIR

OUTBACK LEATHER
Custom Leather Work

Boots & Shoes repaired
Saddles Custom Fitted
Blankets Cleaned & Repaired
Chaps & Saddle Bags for Horse & Motorcycle
CUSTOM MADE, ALTERED, REPAIRED

Store Hours: **Ronald Sargent**
10-5 T-F 309 Main St. Laurel, Md. 301-604-2211
10-2 Sat www.mdoutbackleather.com

MASSAGE

PET/HORSE/FARM SITTING

PHOTOGRAPHY

Tammie J. Monaco Photography



Photos of all things equine

tammiemonaco.smugmug.com

HAY & STRAW

Quality Hay For Sale
Orchard Grass • Timothy
Alfalfa & Mixes
Square & Round Bales
Delivery Available
Local and Long Distance

Zac Virtz
410-259-5853
zcv0794@yahoo.com

SADDLE FITTING

HCS, USA Saddlery Fittings & Sales
Qualified Saddle Fitters
The Society of Master Saddlers



Appointment or Inquiries (717) 294-6757 info@hastilowusa.com Multi-Brand Fittings, Repair Services, Sales, Consignments

Esch's Fencing
Quality Products & Workmanship Since 1987



Split Rail, Post & Board, Slip Board, Woven Wire, Treated & Locust Post, Custom Wood & Steel Gates P.V.C. & Aluminum Fence Pool Enclosures and More!

Call today!
610-857-1676

P.H. DRAYER CO INC
BUILDINGS • BARNS • FENCING
301-473-4466
FAX: 301-473-4424



www.phdrayerco.com Jefferson, Maryland 21755

England Acres - Hay and Straw
Round & Square Bales • Mixed Grass
Timothy • Alfalfa/Orchard Grass Mix • Straw

ON TIME DELIVERY

Also: Skid Loader Work & Pasture Management and Renovations
Frederick & Surrounding Counties

JEFF ENGLAND 240-674-2030 Cell 301-865-3146 Home

TWO TIME TACK



When your horse wants to wear a saddle that fits

SADDLE FIT CONSULTATION

301-739-6615 twoxtack@verizon.net

INSURANCE

Hogendorp Insurance Advisors



Serving: Maryland, Pennsylvania, Virginia & West Virginia
www.HogendorpInsurance.com
Email: info@hogendorpinsurance.com
Office: 443-639-5440

Farm * Auto * Home * Life *
Business * Equine

Farm Family INSURANCE

SHIPPING

MILLENNIUM HORSE TRANSPORTATION



- Local & Long Distance
- Over 30 Years of Experience
- Emergency Services Available

Donna Matthews
(443) 309-1975
dmatthews0111@gmail.com

PROFENCE LLC
We Build to Please

High Tensile • Board Fence • Woven Wire, Non-Climb
• Poly-cote Horse-safe wire • Horse Rail • Deer Fence

877-736-8244

Serving PA, MD, WV, VA, NJ, NY
sales@ProFence.org • www.ProFence.org

TRAILER REPAIR

TRAILER REPAIR

TRAILER REPAIR

SALES • SERVICE Alice & Pete Drayer

BLUE RIDGE TRAILERS LLC

AUTHORIZED TRAILER DEALER
FOR GORE TRAILER MFG. & CALICO TRAILER MFG.

www.blueridgetrailers.com PHONE 301-473-1234
JEFFERSON, MARYLAND FAX 301-473-4424



TRAILER REPAIRS

Trailer and Equipment Sales, Inc.

Complete Line of Trailer Parts and Trailer Accessories

9409 Old Marlboro Pike Upper Marlboro, MD 20772
301-599-6285
www.coxtrailersalesinc.com

Over 25 Years Experience on Flatbeds - Equine - Landscape & Livestock Trailers



MOBILE CUSTOM TRAILER SERVICE & MORE

Axles - Brakes - Bearings - Floors - Couplers - Wiring - Welding
ZIMS Synthetic Products Used On All Trailer Service Work

Thomas Frazier (Tommy) 240-457-1825
Mt. Airy, Maryland

C & C Manufacturing, Inc.

Est. in 1974

Trusted service for those who tow

8255 Beechcraft Ave. • Gaithersburg, MD 20879
(Near the Montgomery Co. Airpark)

301-921-0014 • cctrailer.com

Mon. - Fri.: 8am - 6pm • Sat.: 9am - 1pm

Complete Trailer Maintenance, Service & Repairs
Painting & Modifications • Trailer Floor Replacement
Sales, Installation & Fabrication of Standard & Custom Hitches
Expert Trailer & Tow Vehicle Wiring & Brake Systems
Extensive In-Stock Parts Department with Standard & Hard-to-find Items
Authorized Maryland Inspection Station



- Horse
- Dump
- Stock
- Utility

H.R. COLLINS & COMPANY

TRAILER SERVICE AND REPAIR

H.R. Collins 5139 Perry Road
410-875-2171 Mt. Airy, MD
240-394-0313 hrcollins@comcast.net

VETERINARY SERVICES



Trust SBS
With Your Equine
Reproduction Needs!



Chesapeake City, MD | 410-885-3202
www.selectbreeders.com



State Certified
Established 2003



Shavings and Removal Service For The Small Equine Facility

Removals at your convenience!

Nice hunter green 7 cu. yd. roll off container, the ideal manure management plan for residential settings!

Serving PA, DE, MD and Northern VA

Contact Mick Power
717.405.2957 • www.equirolltransport.com

DEDICATION TO EVERY DETAIL.



CUSTOM PRE-BUILT OR ON-SITE BUILDING. WE BUILD HORSE BARN AND STRUCTURES THAT LAST A LIFETIME.



BUILT TO LAST A LIFETIME
CRICKSIDE BARN
EST. 2004

RUN-INS, SHEDS, BARN, PAVILIONS AND PERGOLAS

SERVING PA, MD, DE, NJ & NY CRICKSIDEBARN.COM
717.636.2002

NOV 2020 **OUT & ABOUT**

Preakness Weekend • Pimlico Race Course • October 1-3



Maryland Jockey Club

The 145th Preakness Stakes certainly lived up to the hype of the hashtag "A Jewel To Remember" with the filly Swiss Skydiver edging out Kentucky Derby winner and Preakness favorite, Authentic, to win by a neck. Jockey Robby Albarado earned his second Preakness win having been aboard Curlin in 2007. This was the first Preakness win for trainer Kenny McPeck and owner Peter Callahan. Swiss Skydiver's time of 1:53.28 was the fastest set by a filly and second only to the 1973 Triple Crown winner Secretariat, who set the current Preakness record at 1:53.



Maryland Jockey Club

Miss Marissa added her third win in a row when she edged out Bonny South to win the Black-Eyed Susan Stakes. Ridden by Daniel Centeno for owner Alfonso Cammarota, Miss Marissa is trained by James Ryerson.



Maryland Jockey Club

Horacio Karamanos rode Evil Lyn to victory in the \$100,000 Hilltop Stakes. Trained by Mike Maker, Evil Lyn sat off the leaders but ran to the outside on the far turn to take the lead in the stretch. Vigilantes Way, ridden by fellow Maryland jockey Forest Boyce, made a late rush but the Paradise Farms Corp./David Staudacher filly Evil Lyn prevailed to win by a half-length.



Maryland Jockey Club

Another Maryland-bred victory during Preakness weekend was MCA Racing Stable's Harpers First Ride winning the \$250,000 Pimlico Special on Friday, October 2. Trained by Claudio Gonzalez, the state's leading trainer for the past three years, Harpers First Ride was ridden by Angel Cruz and was bred by Sagamore Farm.



Maryland Jockey Club

The Maryland-bred Never Enough Time shook off some pressure to win the \$100,000 Skipat Stakes by three-quarters of a length over Liza Star. Owned by breeder R. Larry Johnson and trained by Michael Trombetta, Never Enough Time took to the front early on and never let up. Jockey Julian Pimentel piloted her to the win.

[Read more on equery.com!](http://www.equery.com)



Maryland Jockey Club

Owner/breeder R. Larry Johnson started off Preakness weekend by winning the \$100,000 The Very One Stakes with his homebred A Great Time on October 1. The gelding is also trained by Michael Trombetta and ridden by Julian Pimentel.



Maryland Jockey Club

Four-time Maryland champion jockey Trevor McCarthy rode Fluffy Socks to win the \$150,000 Selima Stakes. Trained by Chad Brown, the Head of Plains Partners LLC homebred Fluffy Socks started near the back of the pack and settled there until McCarthy saw an opening and pushed the filly through to win by 2 ¼ lengths.



Maryland Jockey Club

Laki, who is trained out of Laurel Park by Damon Dilodovico, won at the wire in a three-way photo finish for the \$250,000 Frank De Francis Dash (G3). Owned by Hillside Equestrian Meadows with jockey Horacio Karamanos in the irons, Laki settled off the pace but began to run down the center of the track in the stretch. Laki, Nitrous and Eastern Bay came to the wire together with Laki earning the win.

exp Diamond full

RE classifieds 1/6

empty space

empty space



FARMS & LAND

■ MONTGOMERY COUNTY



DAMASCUS: 58 acre Estate lot with a 5 BR perk, mostly open with a 360 degree view of the Agricultural Reserve. A tree lined driveway has been constructed. Suitable for many agricultural uses allowed in the AR Zone. Good access to RT. 270 and RT.70 Price upon request.

GAITHERSBURG/LAYTONSVILLE AREA: 84+ acre boarding and training stable improved by a 220' x 83' indoor arena with observation room and wash stalls. Attached 54 stall stable with 2 tack rooms, 2 feed rooms, 4 wash stalls, office and bathroom. Also a 300' x 100' lighted outdoor arena.

■ FREDERICK COUNTY

ADAMSTOWN: 128 ac., well-appointed horse & crop farm, improved by a circa 1898 stable in need of renovation. 6 stall stable, run-in sheds, approx. 4000' of frontage on the Monocacy River. Price upon request.



Exclusive Buyer Brokering Available

Call
T.I. McGrath

at Mackintosh, Inc.
Realtors.

Tim the Trail Man
*I have over 35 years
developing trail access.*

(800) 292-3547
(301) 662-0155
(800) 727-7653 x305

Check out my website at www.timthetrailman.net

1020

DAVIDSONVILLE



ACREAGE: 32+
BEDROOMS: 4
BATHROOMS: 4.5

Exclusive training facility built in 2010 includes a 120 X 240 indoor arena, 20 stall barn w/2 H/C wash racks, 4 grooming stalls, lounge, office w/full bath, custom cabinetry in climate controlled tack room, plus an outdoor ring, detached single family home & two building lots. Price Upon Request

ST. MARY'S COUNTY

ACREAGE: 63+
BEDROOMS: 3
BATHROOMS: 3.5



\$860,000

Breton Bay training facility for sale offering two distinct home spaces. One single family home (2007) & an apartment over the 2 story center aisle barn. Multiple paddocks, hay barn, workshop, tack barn, out show ring & practice ring. All just a short hack from the Potomac River.

BRANDYWINE



\$799,950

ACREAGE: 6+
BEDROOMS: 6
BATHROOMS: 4

Equestrian compound w/3 separate living spaces all set on a quiet street not far from the new shops & entertainment in Brandywine. Primary home has full solar, custom construction & 3BR. There is a 2BR apartment. The center aisle barn w/indoor & 8 stalls has a 3rd living area w/full bath.

WESTERN HOWARD COUNTY

ACREAGE: 6+
BEDROOMS: 5
BATHROOMS: 3

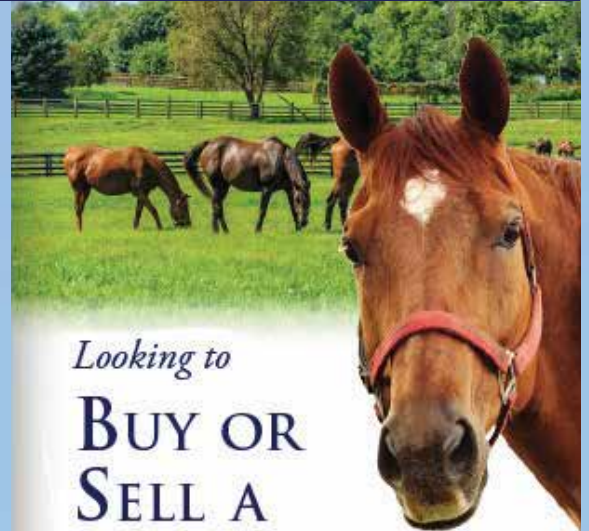


\$545,000

Almost 7 acres surrounded by AG preservation land. Large brick/siding home that is updated & expanded with 5 bedrooms & 3 baths. There's a great area for all of your 4-H projects. In-ground pool. Great Howard County Schools. Appointment only. Call today!

HOWARD COUNTY

Two lots for sale in Western Howard County. You choose. A 3+ acre building lot fully fenced or a 4+ acre building lot with a pond, fully fenced. Each lot is \$288,000



Looking to

BUY OR SELL A HORSE FARM PROPERTY?

Call the **Laura Jones Team!**

Selling farms & homes for 19 years!



Laura-Lee Jones

LONG & FOSTER REAL ESTATE | CHRISTIE'S INTERNATIONAL REAL ESTATE

Laura.Jones@longandfooster.com

Cell phone: 410.707.7246

Office phone: 410.480-3338

f / myhomenow



1120

For current listings visit: www.TheLauraJonesTeam.com

New Office

The Laura Jones Team
with Long & Foster Real Estate
13554 Triadelphia Road,
Ellicott City, MD 21042

The Laura Jones Team
Where Service + Experience
= RESULTS

**I have buyers
looking for
equestrian properties!**

Call me if you're ready to sell!

FALL OFFERINGS!



BOYDS/POTOMAC HUNT COUNTRY: "HONEY ACRES"

First offering of this 77 acre Thoroughbred breeding farm – home to multiple stakes winners. Fenced and crossed fenced with Saratoga Fencing – 30 stall stable plus a stallion barn. Multiple housing plus a beautifully sited 1800's stone residence. Great location and in Poolesville School District – Subdivision possibilities. Price upon request.



FREDERICK

100+ acre retreat surrounded by protected land in the South Mountain/Middletown Valley. Manor home, pool, tennis court. Horse stable, riding ring, hot walker, trails, farm manager housing, outbuildings, multiple ponds. Newly fenced paddocks with run in sheds and automatic waterers. A nature lover's paradise. Priced at \$1,650,000



BOYDS/POTOMAC HUNT COUNTRY

An equestrian's dream! 25 acre estate backing to 3000 acres of protected conservation and farm land. Direct access to miles and miles of riding trails. Beautiful 7 stall stable with all the amenities. All weather outdoor ring Poolesville School District! Don't miss this one! Priced at \$1,499,000

Experience equates advantage-Toni has 32 years of experience selling equestrian properties and farms.



"Hunting" for a Realtor with at Great Track Record?

TONI KOERBER

*Specializing in horse properties and country estates.
Licensed in Maryland, Virginia, and District of Columbia.*

Check Toni's web site for more detailed information

www.tkhomes.com

Cell: 301-802-6770

A Christie's Great Estate Affiliate Broker • 10200 River Road • Potomac, MD 20854 • 301-299-6000



11+ Acres - Dickerson \$1,299,000

Gracious country living in this updated 4 BR, 3.5 BA Colonial home with custom kitchen and new appliances. Lower level includes 2nd family room, full BA, office, storage & utility room with dog bath. Patio includes heated, in-ground salt-water pool with amazing views of Sugarloaf Mountain.

Horse features include 8 stall barn with hot water wash stall, feed room, separate tack room, 12 fenced pastures and 5 dry lots with



Montgomery County Agricultural Reserve

run-in sheds, 100' x 130' sand arena, ample parking for trailers. Solar panels on the barn provide electricity for the the property. Fencing is board and horse-safe electric.

Property also has 2 garages that can be used as a workshop. Convenient to Potomac Hunt fixtures and area riding trails. Near I-270 for easy commuting and access to local equine competition venues.



Marla S. Johnson
Maryland Real Estate Group
(C) 301-471-9945
(O) 301-865-2037



Nutrena
What's inside counts.



We know what it takes to provide the balanced nutrients your horses rely on to look and feel their best. It comes down to what's inside the feed. That's why our SafeChoice® products are leading the controlled-starch market. It's also why we're always working to stay ahead of the curve on equine nutrition and topline health. Because the two go hoof in hoof.

NOVEMBER SAFECHOICE SALE: BUY 3, GET 1 FREE EXCLUSIVELY AT:

R&D CROSS
13801 Martin Rd
Brandywine, MD 20613
(301) 579-2449



© 2020 Cargill, Incorporated. All rights reserved.

Pickwick Stables

Under New Management

- Hunters, Jumpers & Equitation
- Training & Boarding
- Indoor Arena
- 2 Outdoor Arenas
- Private & Semi-Private Turnout
- Convenient to Carrollton Hounds

Stalls Available

6020 Emerald Lane · Sykesville, MD 21784
 443-506-0737 (cell)
www.PickwickStables.com



Original photo © Lili, 2008

1020

SAWDUST, SHAVINGS, AND MANURE REMOVAL SERVICE

"In One Trip to Save You Time and Money"

Premium Pine Shavings in bulk or bales
 Sawdust available year 'round

- 15 & 30 cu yd containers available for bulk delivery and manure removal service
- Serving satisfied customers in PA, MD, DE, and NJ for over 20 years
- "Innovators in Chesapeake Bay Composting initiatives for a greener earth."
- "Providing quality bedding products and service that satisfy horsemen from the pleasure rider to the Thoroughbred trainer..."

Pine View Trucking

350 Nottingham Rd.
 Nottingham, PA 19362
 717-529-2855

visit us on the web at
www.pineviewtrucking.com



0320



Take a {companion} H.I.N.T.!

(Horse In Need of Transition)



Ima Classy Design
 1998, 15h Paint mare



Isabelle
 2013, 16.2h TWH mare



Take Me Downtown
 2007, 16.2h TB mare

1120

Whatever you might be looking for, METS has your next partner! For more info and additional horse listings, please visit our website or email us.

www.mdequinetransition.org * info@mdequinetransition.org * 410-970-6474 * PO Box 606, Lisbon, MD 21765

MHC spread

MHC spread

ADOPTION
OPTION**Maryland Equine Transition Service**

Isabelle "Izzy": 2004, 16.2h Tennessee Walking Horse mare. After multiple rounds of treatment for EPM & Lyme, she's looking for a companion home to relax and recuperate. Free to good home. Not mareish, but rules her current herd.

410-970-6474; horses@mdequinetransition.org;
www.mdequinetransition.org

**Middle Ridge Farm & Rescue**

Jill: Looking for a home as a companion and pasture pet. 12yo, just under 16 hands. Many other special senior horses looking for safe pasture homes.

301-305-6440; info@middleridgefarm.com;
www.MiddleRidgeAnimalRescue.com

**Standardbred Retirement Foundation**

Novel's Finale: Gorgeous 15yo STB Mare w/equally amazing movement! 16h, awesome build, great attitude. Rode like an old pro w/young volunteer. Will walk, pace, and canter. She is working hard on leads & trot. Ability to go far!

609-738-3255; SRFadoption@gmail.com;
www.Adoptahorse.org

**Days End Farm Horse Rescue**

Journey: 2004, 14.2hh, Paso Fino. Looking for the perfect trail partner? Journey is a kind and quiet mare. Experience with obstacle work and confident on the trails.

301-854-5037; Adopt@defhr.org; www.defhr.org

**Days End Farm Horse Rescue**

Veda: 2003, 15.0hh, Quarter Horse. Perfect companion for the older horse. Light riding. English and western. This sweet mare would be a great additional to any herd.

301-854-5037; Adopt@defhr.org; www.defhr.org

**Safe Haven Equine Warriors**

SEW'S latest rescue, saved from slaughter. This pretty girl will be available for adoption in a few months!

410-442-5177; safehavenequinewarriors@gmail.com;
www.safehavenequinewarriors.com

**The Foxxie G Foundation**

Drevan: 13yo, big, 16.2H, pretty Thoroughbred mare with a lovely way of going. She has shown on the local level as a hunter and does best with a soft confident rider. Adoption fee \$500.

301-667-2553; whinnywhiskers@thefoxiegfoundation.org;
www.thefoxiegfoundation.org

**GAIT, INC.**

Kahuna: 9yo, 15.3h Spotted Saddle Horse gelding. Well broke & ready to hit the trail w/Adv rider. Sweet boy, well gaited. Lots of buttons, so adv rider will do best w/him. Adoption fee \$1300, located in Dillsburg, PA Others Avail.

240-720-4545; www.gaitrrr.org

**MidAtlantic Horse Rescue**

Mr. J: ch, g., 16h, 2010. 2020 RRP Makeover Eligible. Sound, light balanced mover. Adoption fee \$1800. Other nice TBs available.

302-376-7297; Bev@MidAtlanticHorseRescue.org;
www.MidAtlanticHorseRescue.org

**Lifeline Horse Rescue & Rehabilitation, Inc.**

Toosmartsweetheart: super sweet 16h chest '02 OTTB mare. Trained English & Western, has trail experience. Bomb-proof solid citizen, safe for kids & beginners. Beautiful girl would make a perfect husband's horse. Req some maintenance.

301-318-1686; Leila@lifelinehorserescue.org;
www.lifelinehorserescue.org

**Maryland Horse Rescue**

Ginger: 1998, 15.2hh Paint mare. Gorgeous girl! Very gentle and laid back, gets along in mixed herd. Available as a companion with no adoption fee through our unique foster program. Ask us about the benefits of fostering!

301-992-0284; mdhorserescue@gmail.com;
www.mdhorserescue.net

**Gentle Giants Draft Horse Rescue**

Storm: 16 hand Clydesdale cross, 20 years old. Walk/trot/canter for intermediate rider.

adoptions@gentlegiantsdrafthorserescue.org;
www.gentlegiantsdrafthorserescue.org

**Gentle Giants Draft Horse Rescue**

Caramel: 13 hand Haflinger, 25 years old. Companion only. Sweet and gentle.

adoptions@gentlegiantsdrafthorserescue.org;
www.gentlegiantsdrafthorserescue.org

**Little Longears Miniature Donkey Rescue**

Donkeys, donkeys everywhere! Miniatures, Standards & even Mammoths! Donkeys are sweet, social & super smart! Come see for yourself. We have lots of donkeys ready for adoption.

301-908-7351; info@littlalongears.org;
www.littlalongears.org

**Maryland Equine Transition Service**

Take Me Downtown (Indie): 2005, 16.2h, reg TB mare. Best suited as companion only. Completely pasture sound w/no maintenance. Super sweet, but needs time to warm up. Advanced handler suggested. Free to good home.

410-970-6474; horses@mdequinetransition.org;
www.mdequinetransition.org



BRIDAL PATHS

Congratulations to Laurel Park-based Thoroughbred owner and trainer **Bob Haynes** who married exercise rider **Vicki Irons** on September 24 at their farm in Laytonsville.



Picture above: Congratulations to De La Brooke Foxhounds W huntsman **Kami Wolk** who married **Bruce Bitting**.

COMINGS & GOINGS

Mike Algeo has stepped down as the Maryland Racing Commission Chairman but will remain on the Commission for another four years.

Emmet Davitt is the new Chairman of the Maryland Racing Commission.

Tim McGrath is now a District Supervisor for the Montgomery County Soil Conservation District.

Joe Lehman and **Chris Miller** have both been appointed as Associate Supervisors for the Montgomery County Soil Conservation District.

SEND YOUR EQUIERY LIFE
NEWS TO EDITOR@EQUIERY.COM

MARYLAND WILL MISS...

Howard Franklin Payne of Reichs Ford Farm in Ijamsville died on June 20 at the age of 71. Payne was involved in many businesses and charitable service communities. He founded and served as President of the award-winning H.F. Payne Construction Company (later named H.F. Payne Homes). He was also the twice President of the Frederick County Builders Association and past President of the Maryland State Builders Association.

Giving back to the community and serving others was central in Howard's life through his membership in the Good Samaritan Group of Frederick Health Hospital and the Frederick Rotary Club. He also served on the advisory committee of the Career and Technology Center for Frederick County Public Schools, was chairman of Corporate Fundraising for the Big Brothers Big Sisters Frederick Division, and was president of the church council of Living Grace Lutheran in Urbana.

Payne was also an avid pilot and would fly family and friends. Payne and his wife Joy were long-time supporters of the Maryland Horse Council and *Equiery* advertisers.

Thoroughbred racehorse breeder **Donald Kenyon Dean** of Potomac died on October 1. He was 85. He attended Will Rogers High School where he met Cora Hicks. They both attended Oklahoma State University where Dean joined the ROTC and married Hicks during their sophomore year in 1956. The couple had six children.

After his wife and daughter Cora died in a car accident, Dean settled in Potomac with his remaining children while working for IBM. After retiring from IBM, he became a lobbyist for Loral and then Lockheed Martin until 2000. In 2005, Dean met his second wife Martha Johnson. Sadly, their marriage ended after nine years, yet they worked to maintain a friendship.

Dean bred and raced Thoroughbreds for 37 years beginning with a filly named Mt. Airy Mama. The filly did not have the best racing career but went on to be Dean's foundation broodmare. At one point, he had 38 horses in his stable, sharing his passion with family and friends. His love of horses led him to work as a hot walker in his 70s. In addition, he served as the President of the Race Track Chaplaincy of America for several years and was also a Board Member. After completing his national



Howard Payne and Joy Fernon at the MHC BBQ at Caves Farm

Tracy McKenna

RTCA terms, Dean turned his focus to supporting the local chapters in Maryland and West Virginia.

Tommy McGivern

Submitted by *J.B. Secor*

Steeplechase trainer and jockey Tommy McGivern died on July 14 in Ireland after a brief illness. He was 62. McGivern was a very gifted steeplechase rider over in the Old County and won some 200+ jump races in Ireland. He earned his first win as a teenager riding for Michael Cunningham's stables. He rode the 1982 Champion Hurdle horse For Auction as well as other such notable horses as Irish Fashion, Greasepaint and Drumgora. With Drumgora, he won the 1977 Champion Novice Hurdle at Punchestown and the 1980 Red Rum Chase at Aintree.

After a riding career spanning just over 20 years, McGivern crossed the pond and landed in Maryland in the early 1990s working at the famous stables of Thomas H. Voss. Soon after, he broke out on his own career as a trainer working with horses for Jerry and Caroline Stautberg, Skip Crawford and the late Peter Hitchen, among others.

He had 124 starts as a trainer here in the U.S. from 1995 to 2006 with his first race on U.S. soil being the Hunter Chase Timber at the Howard County-Iron Bridge Races in March 1995. There, he trained Sir Darlin to finish second for Mrs. Henry Stern. His first win over fences was training Aron Yagoda's Mister Kite to his only win, the Maiden Hurdle at Saratoga Open House in 1996. He later purchased Mister Kite and finished second at Willowdale and third at the Fair Hill Races and Pimlico Races in 1997.

His last win in Maryland was with Fergis Galvin's Ambenay in the Maiden Hurdle at the 2003 Potomac Hunt Races. McGivern had great luck at the Potomac Races winning the Novice Timber at the 2000 Potomac Hunt Races with R.B. Billy, owned by the Crawford-Hitchen Stable. In 1997, McGivern won the Maiden Hurdle with Morning Mass (owner Crawford-Hitchen Stable) and the Open Flat with Just Plain Texas (owner Bruce Watkins) at Potomac. McGivern trained Morning Mass to three wins and several top finishes in just two seasons before the gelding was sold to Foxbrook Farm.

NOV 2020 OUT & ABOUT

The Races at Shawan Downs • Hunt Valley • September 26



Armata Stable's Zanzi Win went to the front right from the start of the Amateur Apprentice Hurdle race winning by 1.5 lengths with Archie MacAuley in the irons for trainer Ricky Hendriks.

Tammie J. Monaco

Tammie J. Monaco

In the Maiden Hurdle, Road To Oz and Overdrawn battled it out to the last fence. Jockey Graham Watters pushed Road To Oz (gold cap/sleeves) ahead for the win. The grey gelding is owned by Holwood Stable and trained by Mark Beecher.



Bob Keller

Bob Keller

Graham Watters earned his second win of the day aboard Rather Be Racing's Our Legend. Trained by Jack Fisher, the Irish gelding rallied from slightly off the pace to win the Open Hurdle.

In the final race of the day, Colin Smith rode Agravain to win by 12 lengths in the Restricted Young Adult Flat race. Agravain is owned by Bruton Street-US and trained by Todd Wyatt.



Tammie J. Monaco

Tammie J. Monaco

In the Open Timber, Skylar McKenna set the pace aboard Royal Ruse with Curve of Stone just behind. Curve of Stone fell two fences from the finish leaving Royal Ruse alone out front to win by 15 lengths for trainer Sanna Neilson and owner Charles C. Fenwick, Jr.

Junior jockey Teddy Davies earned a win aboard Hail Michigan in the Maiden Amateur Apprentice Training Flat race. Trained by Joe Davies and owned by William F.C. Marlow, Jr., Hail Michigan dueled with Optical Illusion down the stretch pulling away at the end for the win.



Tammie J. Monaco

Tammie J. Monaco

Skylar McKenna was in the winner's circle again after the Amateur Apprentice Timber, winning by a length aboard Welcome Here Farm's Second Amendment, trained by Sanna Neilson.

Skylar McKenna's third win of the day came aboard the Jack Fisher-trained gelding Brianbakescookies (orange/brown cap) in the Open Amateur Apprentice Training Flat race. Owned by Mrs. S.K. Johnston, Jr., the chestnut gelding rallied around the last turn to win by three lengths.



Bob Keller

Leslie Young trained the Maiden Timber winner Tomgarrow for owner Leiper Fork Steeplechasers LLC. Jockey Gerard Galligan pushed Tomgarrow ahead at the wire to win narrowly over Satish, also trained by Young.

Trainers

Greener Pastures

Honor the memory of your beloved
animal with a Greener Pastures
Roll Call or Memorial Ad

EQUIERY

Contact Tracy • 410-489-7826
tracy@equiery.com

Roll Call Sponsored by

Agape 
www.agapepetservices.com pet services

Roll Call

MINI

Cat

6/2002 - 9/28/2020

Julia Beamish & David Lambert

MOLLY

Gotland Pony

? - 10/15/2020

The Long Family

RIVERMAN

Holsteiner Stallion

1990 - Oct. 2020

Hilltop Farm

Ad Index

RIDING RIGHT®

Apparel for Horse & Rider
Equestrian Gifts

Bucas
FITS
Good Fellow
Goode Rider
Kerrits
Mountain Horse
Romfh
Fine Jewelry
And So Much More!



Got Bucas?

Sign Up for
Email Specials

Join us on
for contests
and more



1000s of Items
on our website

800-545-7444

www.ridingright.com



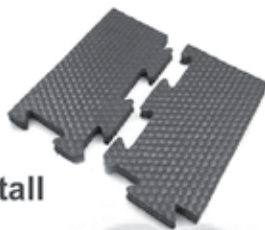
We're Here For You

at 142 Railroad Ave, Westminster, MD 21157

Come visit our Warehouse Outlet Shop - Open by appt. Mon - Sat, or by chance



Emge Equine Services



Interlocking Stall
Mat Kits

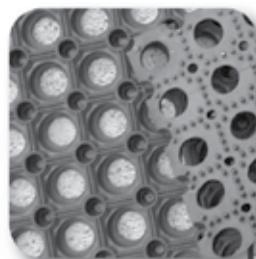
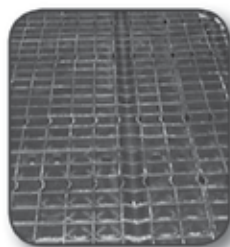
Create One Piece Floor in Minutes!

Get the most choices in rubber stall mats. Straight edge and interlocking kits. 12 lbs. to 100 lbs. Get the mats that:

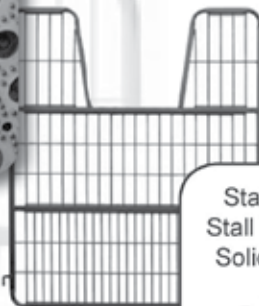
- Fully revulcanized (heat processed for longevity)
- Have the highest safety and comfort design
- Delivery and installation available

Got Mud?
We have solutions

Erosion Control Mats &
Grid Systems



Mats for Fitness Too!



Stall Doors & Grills
Stall Ventilation Gates
Solid Framed Fronts
Dutch Doors
Barn End Doors
All Welded Construction
Pre-Galvanized Steel
Powder Coated Paint

800-467-7321

www.earthhorse.com



Member - MHC

